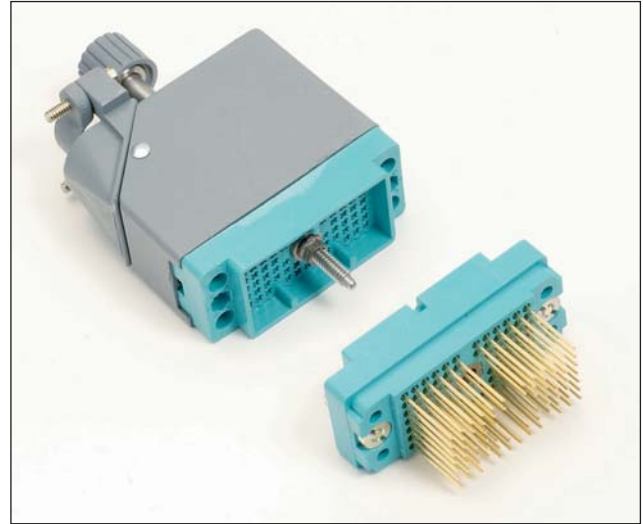


## Series 8026 – 0.100" Rectangular Connector

### FEATURES

- Economical miniature high-density connectors suitable for high-reliability and military applications.
- 0.100" (2.54mm) square grid rack and panel connectors with male and female insulators are available in four sizes: 33, 75, 117 and 165 contacts.
- Insertable / removable mini-varilok and mini-wrap contacts.
- Crimp and/or solderless wrap terminations.
- Exceptional versatility: all hardware can be mounted on plug or receptacle (see ordering code).
- Actuating screw facilitates mating and unmating; locks mated connectors together.
- Keyed and shrouded insulator design prevents incorrect mating and protects contacts from mishandling.
- Simplified polarizing hardware permits 36 polarization combinations per connector pair.
- Optional covers with top or side cable entry and clamp.
- Optional cable clamps.
- Choice of any combination of hardware — or no hardware.



### TECHNICAL SPECIFICATIONS CONTACTS

**Current Rating:**  
5 amperes

**Contact Resistance:**  
6 milliohms

**Withdrawal Force:**  
2 to 8 ounces max. per contact

**Material:**  
Phosphor Bronze

**Standard Plating:**  
Gold, 10 microinches min.,  
over Nickel,  
50-100 microinches

**Spacing:**  
0.100" (2.54mm)

### INSULATORS

**Insulation Resistance:**  
5,000 megohms, min.  
(diallyl phthalate insulators)  
5,000 megohms, min.  
(polycarbonate insulators)

**Operating Temperature:**  
-40°C to +120°C

**Dielectric Withstanding Voltage:**  
Sea Level: 1,000 Volts rms

**Materials:**  
0.100" (2.54mm) spacing –  
diallyl phthalate, glass-filled,  
flame resistant

### ORDERING CODE

**00**

**8026**

**033**

**Number of Contacts**  
033 = 33  
075 = 75  
117 = 117  
165 = 165

**000**

#### Contact Code

Order crimp contacts separately by Part Number. Otherwise specify contact code 491.  
000 = Crimp (3000 - contact reel)



Part Number  
60 8216 0323 00 339

000 = Crimp (loose contact)  
Accepts #22-30 AWG wire



Part Number  
60 8216 0313 00 339

491 = Wire wrappable removable contact .025" (.635mm) sq. x .564" (14.33mm) tail



Part Number  
60 8216 0413 00 339

**803**

#### Variation Code

Add 050 to order alternative keying (Pin & Socket)  
i.e. 701 = Standard hermaphroditic keying  
751 = Pin and socket keying  
Complete a 15 digit assembly number for each mating part, male and female.

## Series 8026 – 0.100" Rectangular Connector

### VARIATION CODES

**33 Contacts  
Table 1**

Insulator Body Type	Variation Code No.	Actuating Screw	Fixed Nut	Keying Hardware	Cover
Male (Exposed Contacts)	701	Yes	No	Yes	No
	702	Yes	No	No	No
	703	No	Yes	Yes	No
	704	No	Yes	No	No
	733	No	No	Yes	No
	734	No	No	No	No
Female (Recessed Contacts)	801	No	Yes	Yes	No
	802	No	Yes	No	No
	803	Yes	No	Yes	No
	804	Yes	No	No	No
	833	No	No	Yes	No
	834	No	No	No	No

**33 Contacts  
Table 2**

Insulator Body Type	Variation Code No.	Actuating Nut	Fixed Nut	Keying Hardware	Cover
Male (Exposed Contacts)	503	No	Yes	Yes	No
	504	No	Yes	No	No
Female (Recessed Contacts)	601	No	Yes	Yes	No
	602	No	Yes	No	No

**75, 117 & 165 Contacts  
Table 3**

Insulator Body Type	Variation Code No.			Cable Entrance	Actuating Screw	Fixed Nut	Keying Hardware	
	Without Cover	Cover Small Clamp	Cover Large Clamp					
Male (Exposed Contacts)	701	—	—	No	Yes	No	Yes	
	702	—	—	No	Yes	No	No	
	703	—	—	No	No	Yes	Yes	
	704	—	—	No	No	Yes	No	
	733	—	—	No	No	No	Yes	
	734	—	—	No	No	No	No	
	—	705	713	Top	Yes	No	Yes	
	—	706	714	Side	Yes	No	Yes	
	—	707	715	Top	Yes	No	No	
	—	708	716	Side	Yes	No	No	
	—	709	717	Top	No	Yes	Yes	
	—	710	718	Side	No	Yes	Yes	
	—	711	719	Top	No	Yes	No	
	—	712	720	Side	No	Yes	No	
	—	735	739	Top	No	No	Yes	
	—	736	740	Side	No	No	Yes	
	—	737	741	Top	No	No	No	
	—	738	742	Side	No	No	No	
	Female (Recessed Contacts)	801	—	—	No	No	Yes	Yes
		802	—	—	No	No	Yes	No
803		—	—	No	Yes	No	Yes	
804		—	—	No	Yes	No	No	
833		—	—	No	No	No	Yes	
834		—	—	No	No	No	No	
—		805	813	Top	No	Yes	Yes	
—		806	814	Side	No	Yes	Yes	
—		807	815	Top	No	Yes	No	
—		808	816	Side	No	Yes	No	
—		809	817	Top	Yes	No	Yes	
—		810	818	Side	Yes	No	Yes	
—		811	819	Top	Yes	No	No	
—		812	820	Side	Yes	No	No	
—		835	839	Top	No	No	Yes	
—		836	840	Side	No	No	Yes	
—		837	841	Top	No	No	No	
—		838	842	Side	No	No	No	

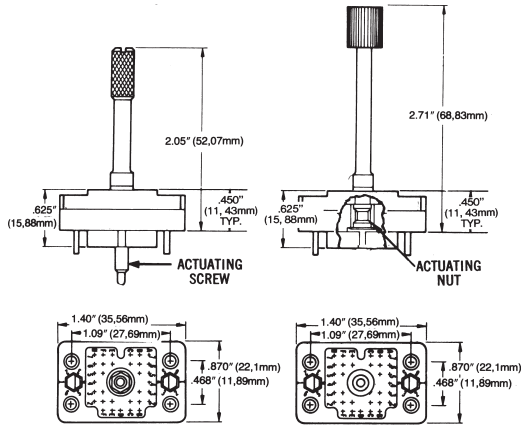
## Series 8026 – 0.100" Rectangular Connector

### 33 CONTACTS

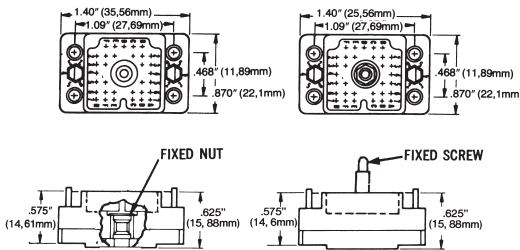
Female Plug (Recessed Contacts)  
For variation code number

See Table 1  
Page 29

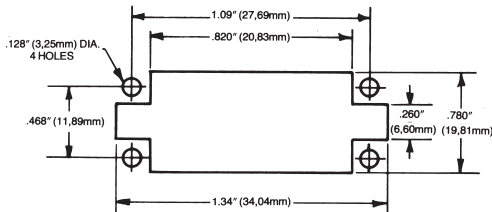
See Table 2  
Page 29



#### MALE RECEPTACLE (Exposed Contacts)



#### RECOMMENDED CHASSIS LAYOUT

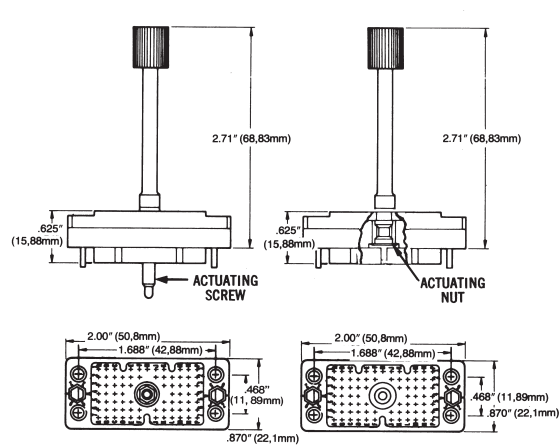


### 75 CONTACTS

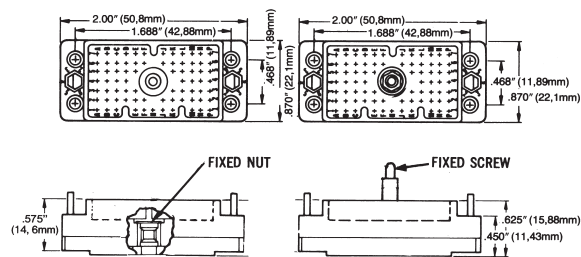
Female Plug (Recessed Contacts)  
For variation code number

See Table 3  
Page 29

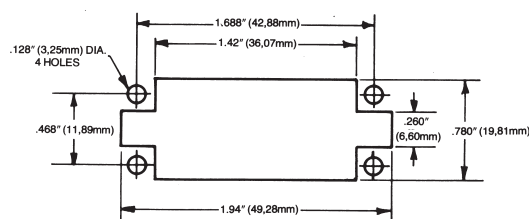
See Table 4  
Page 29



#### MALE RECEPTACLE (Exposed Contacts)



#### RECOMMENDED CHASSIS LAYOUT



## SERIES 8026 COVER CROSS REFERENCE. FOR DETAILS SEE PAGE 21

Cover Number	Cable Entrance	Clamp	
		Description	8026/.100" (2.54mm) sq.
30 8016 9821 00 000	Side	Small	75 Pin
30 8016 9822 00 000	Top	Small	75 Pin
30 8016 9823 00 000	Side	Small	117 Pin
30 8016 9824 00 000	Top	Small	117 Pin
30 8016 9825 00 000	Side	Large	75 Pin
30 8016 9826 00 000	Top	Large	75 Pin
30 8016 9827 00 000	Side	Large	117 Pin
30 8016 9828 00 000	Top	Large	117 Pin
30 8016 9832 00 000	Side	Large	165 Pin

Cover Number	Cable Entrance	Clamp	
		Description	8026/.100" (2.54mm) sq.
30-8016-9833 00 000	Top	Large	165 Pin
30-8016-9838 00 000	Side	Ex-Large	75 Pin
30-8016-9839 00 000	Top	Ex-Large	75 Pin
30-8016-9840 00 000	Side	Ex-Large	117 Pin
30-8016-9842 00 000	Top	Ex-Large	117 Pin
30-8016-9843 00 000	Side	Ex-Large	165 Pin
30-8016-9844 00 000	Top	Ex-Large	165 Pin
30-8016-9845 00 000	Side	Ex-Large	—
30-8016-9846 00 000	Top	Ex-Large	—

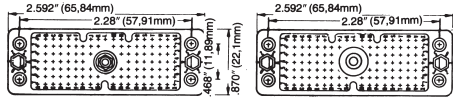
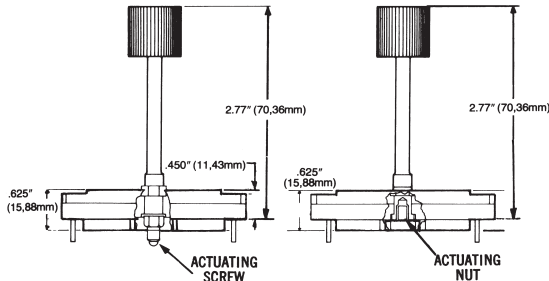
## Series 8026 – 0.100" Rectangular Connector

### 117 CONTACTS Female Plug (Recessed Contacts)

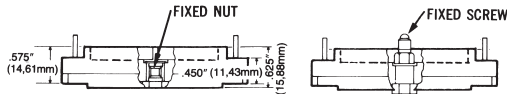
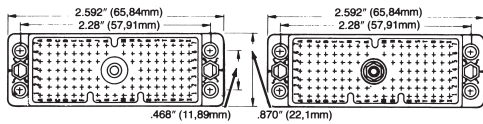
For variation code number

See Table 3  
Page 29

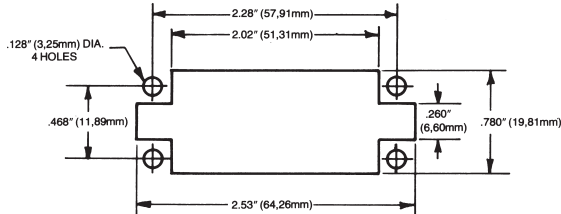
See Table 4  
Page 29



MALE RECEPTACLE (Exposed Contacts)



RECOMMENDED CHASSIS LAYOUT

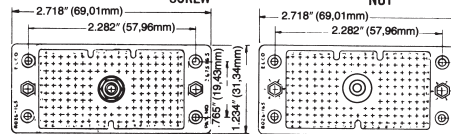
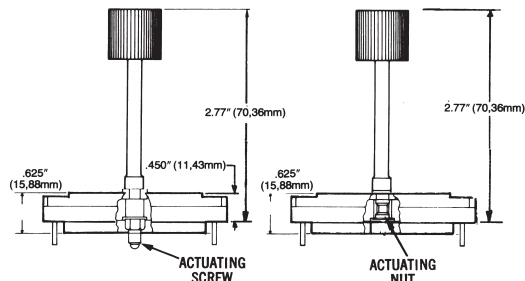


### 165 CONTACTS Female Plug (Recessed Contacts)

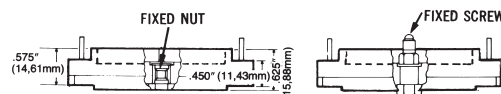
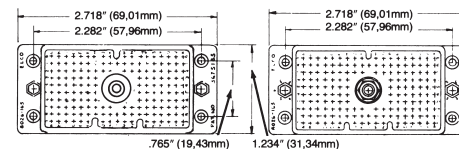
For variation code number

See Table 3  
Page 29

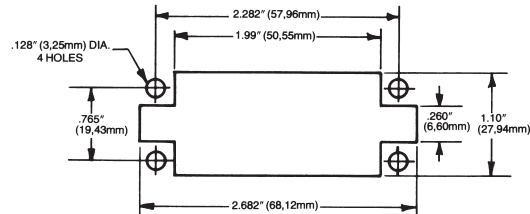
See Table 4  
Page 29



MALE RECEPTACLE (Exposed Contacts)



RECOMMENDED CHASSIS LAYOUT



## POLARIZATION CODE

Polarizing pins, when desired, are factory set in position #1. To order factory settings other than position #1, fill out the "Polarizing Code" below and submit it along with the completed connector ordering code.

**P**

Insulator Body Type  
P = Male, R = Female

**LS**

Left Side Pin

**5**

Left Side Pin Position  
1 through 6

**RS**

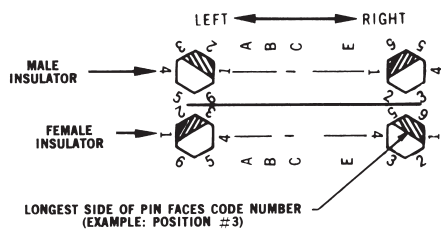
Right Side Pin

**3**

Right Side Pin Position  
1 through 6

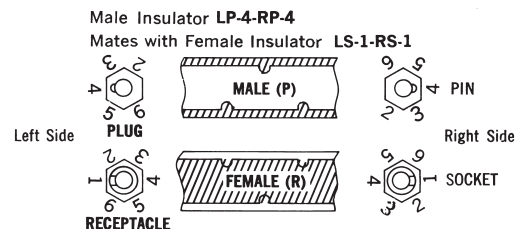
## POLARIZATION / KEYING

EXAMPLE: P-LS-5-RS-3 Mates with R-LS-5-RS-3 as shown below



## ALTERNATIVE KEYING

EXAMPLE (PIN & SOCKET)



NOTE: Same size of pin and socket keying hardware are used on all existing 8026 connectors (33, 75, 117, 165) – both sides