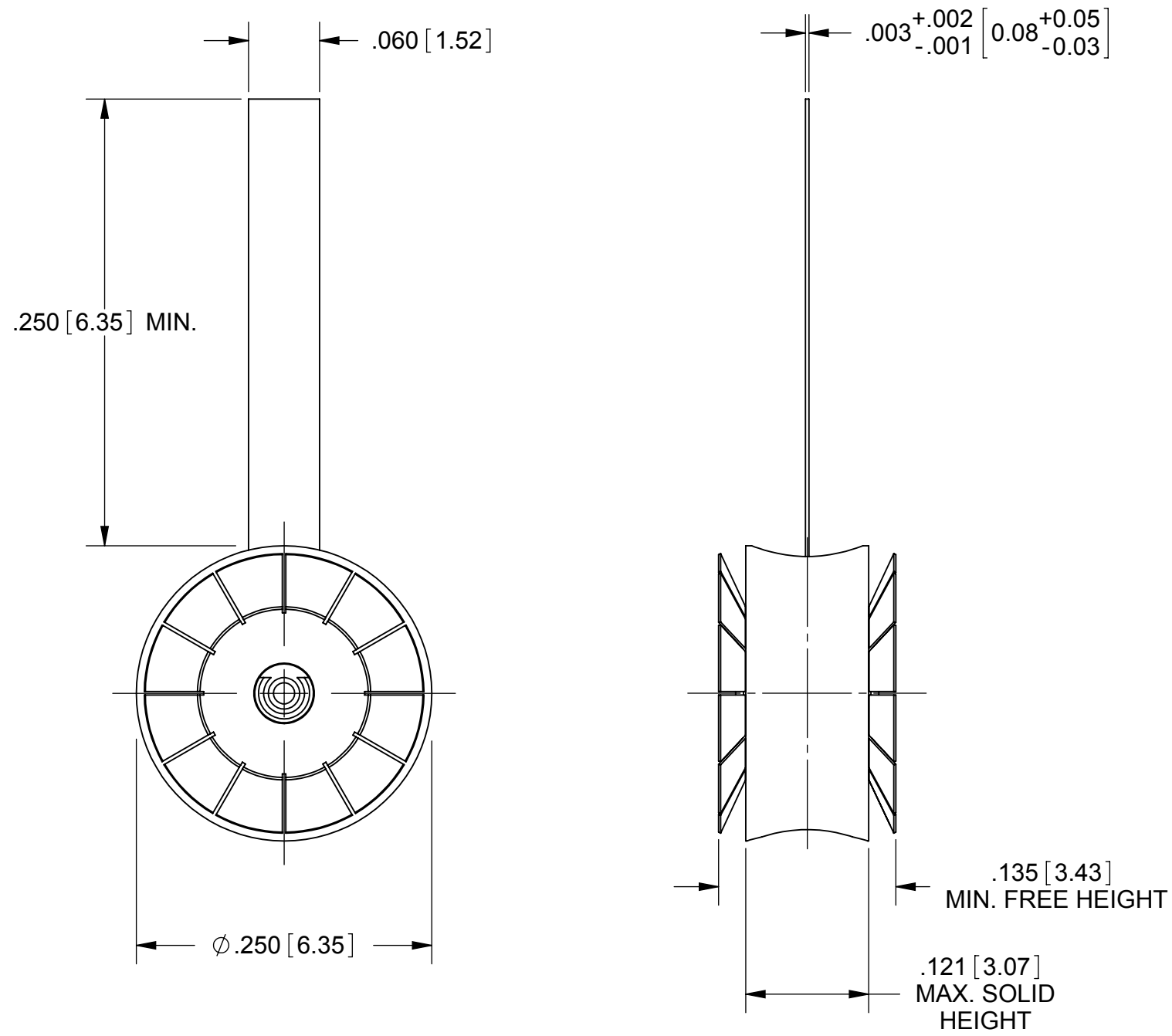


PRODUCT DATA DRAWING

REVISION HISTORY			
REV	DESCRIPTION	DATE	APPROVED
-	DCN 38070	03/11	PJS



MATERIAL:

BODY: BRASS PER ASTM B16, ALLOY UNS No. C36000
TAB & SPRINGS: BERYLLIUM COPPER PER ASTM B194, ALLOY UNS 17200, TD04
RESISTOR ELEMENT: ALUMINA SUBSTRATE WITH NICHROME RESISTOR
INSULATOR: PTFE PER ASTM D1710, TYPE I, GRADE 1, CLASS B

FINISH:

BODY & SPRINGS: GOLD PER ASTM B488, TYPE I, CODE C, CLASS 2.54; OVER COPPER PER AMS-2418, TYPE I
TAB: TIN PLATE PER SAE-AMS-P-81728, OVER COPPER PER MIL-C-14550, CLASS 4.

PERFORMANCE:

IMPEDANCE: 50 OHMS
FREQ. RANGE: 1.10:1 DC TO 7.0 GHz
 1.20:1 7.0 GHz TO 12.4 GHz
 1.35:1 12.4 TO 18.0 GHz
OPERATING TEMP.: -50 °C TO +125 °C
AVG. POWER: 1 WATT TO 75° (POWER INPUT DERATED LINEARLY FROM 25° TO .5 WATT AT 125 °C)

MATERIAL: SEE NOTES	DIMENSIONS ARE IN INCHES TOLERANCES: FRACTIONAL: ±1/64 ANGULAR: X° ±1°0' X'X' ±15'	UNLESS OTHERWISE SPECIFIED 1) ALL DIMENSIONS ARE IN INCHES (MILLIMETERS) 2) ALL DIMENSIONS ARE AFTER PLATING. 3) BREAK CORNERS & EDGES .005 R. MAX. 4) CHAM. 1ST & LAST THREADS. 5) SURFACE ROUGHNESS 63-MIL-STD-10. 6) DIA.'S ON COMMON CENTERS TO BE CONCENTRIC WITHIN .005 T.I.R. 7) REMOVE ALL BURRS	SV Microwave, Inc. 2400 Centrepark West Drive, Suite 100 West Palm Beach, FL 33409
FINISH: SEE NOTES	DECIMAL: X ±.030 .XX ±.010 .XXX ±.005	INTERPRET DIMENSIONS AND TOLERANCES PER ASME Y14.5M - 1994	TITLE: RESILIENT STRIPLINE TERMINATION
SURFACE AREA: N/A	THIRD ANGLE PROJECTION	DRAWN: FED 03/09/11	SIZE: B CAGE CODE: 95077 DWG. NO. 0100-0002
<p>PROPRIETARY</p> <p>THE INFORMATION CONTAINED IN THIS DRAWING IS THE SOLE PROPERTY OF SV MICROWAVE, INC. ANY REPRODUCTION IN PART OR AS A WHOLE WITHOUT THE WRITTEN PERMISSION OF SV MICROWAVE, INC IS PROHIBITED.</p>		CHECKED: PJS 03/09/11	SCALE: 8:1
		APPROVED: PJS 03/09/11	SHEET 1 OF 1