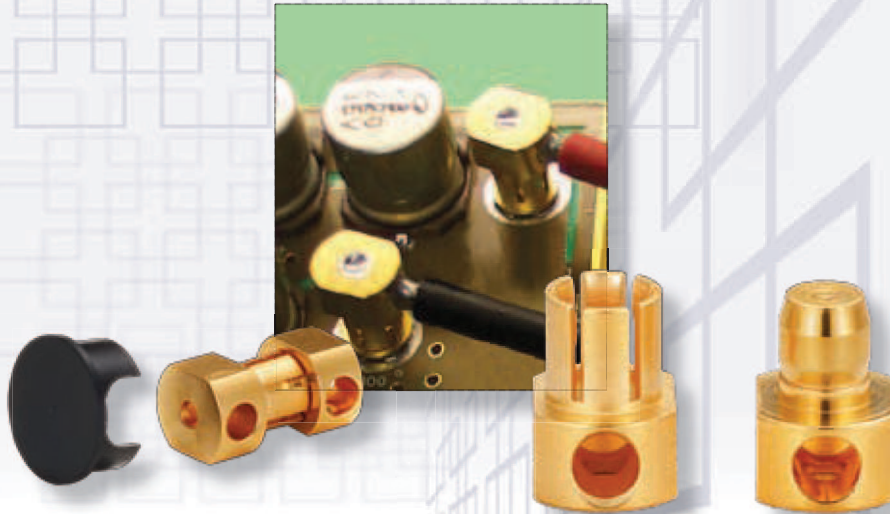


Winchester Electronics Presents...

PowerSnap Power Connectors



Product Benefits:

- Snap feature for improved mating.
- Current capacity up to 40 Amps.
- Pick-and-place, tape-and-reel versions for automated equipment.
- Low mated-pair profile - enables power in tight spaces.
- Custom designs based on your system requirements.
- RoHS compliant.
- SMT, Cable, and Thru-Hole designs.

PowerSnap connectors have a snap feature for secure mating that does not exist on typical slide-on style power connectors. PowerSnap connectors come in both SMT, thru-hole, and cable versions and are capable of carrying current up to 40 Amps, depending on configuration.

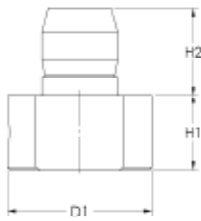


Fig. 1

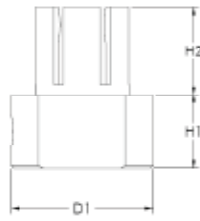


Fig. 2

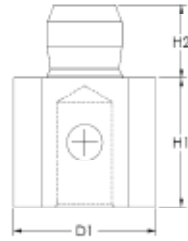


Fig. 3

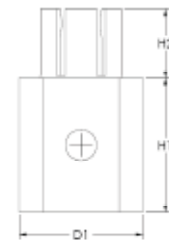


Fig. 4

Part #	Fig. #	Gender	Hgt. (H1)/mm	Hgt. (H2)/mm	Dia. (D1)/mm	AWG	AMPS	Description
01431	1	Plug	0.144/3.66	0.167/4.24	0.275/6.99	20	8	Rt. Angle Wire Contact
01432	2	Jack	0.144/3.66	0.170/4.32	0.275/6.99	20	8	Rt. Angle Wire Contact
01332	1	Plug	0.144/3.66	0.167/4.24	0.275/6.99	14	20	Rt. Angle Wire Contact
01208	1	Plug	0.250/6.35	0.187/4.75	0.275/6.99	14	20	Rt. Angle Wire Contact
01348	2	Jack	0.144/3.66	0.170/4.32	0.275/6.99	14	20	Rt. Angle Wire Contact
01358	1	Plug	0.144/3.66	0.167/4.24	0.275/6.99	12	30	Rt. Angle Wire Contact
01359	2	Jack	0.144/3.66	0.170/4.32	0.275/6.99	12	30	Rt. Angle Wire Contact
01361	1	Plug	0.186/4.72	0.167/4.24	0.275/6.99	10	30	Rt. Angle Wire Contact
01362	2	Jack	0.186/4.72	0.170/4.32	0.275/6.99	10	30	Rt. Angle Wire Contact
01369	1	Plug	0.135/3.43	0.145/3.68	0.275/6.99	12	30	Rt. Angle Wire Contact - Low Profile
01381	3	Plug	0.250/6.35	0.145/3.68	0.275/6.99	12	30	Straight Wire Contact
01382	4	Jack	0.300/7.62	0.155/3.94	0.275/6.99	12	30	Straight Wire Contact
01131	1	Plug	0.250/6.35	0.187/4.75	0.281/7.14	8	40	Rt. Angle Wire Contact

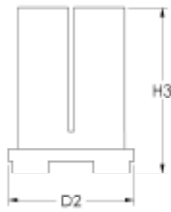


Fig. 5

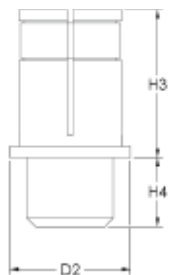


Fig. 6



Fig. 7

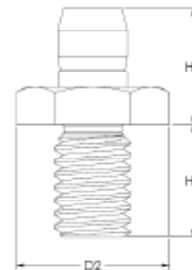


Fig. 8

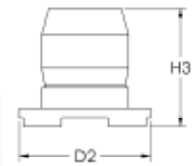


Fig. 9

Part #	Fig. #	Gender	Hgt. (H3)/mm	Hgt. (H4)/mm	Dia. (D2)/mm	AMPS	Description
01307	5	Jack	0.290/7.37	N/A	0.218/5.54	40	SMT Jack
01206	6	Jack	0.270/6.86	0.125/3.18	0.218/5.54	40	Thru-Hole Jack
01127	5	Jack	0.290/7.37	N/A	0.218/5.54	40	SMT Jack
01333	5	Jack	0.200/5.08	N/A	0.218/5.54	40	SMT Jack
01347	9	Plug	0.197/5.00	N/A	0.218/5.54	40	SMT Plug
01368	6	Jack	0.270/6.86	N/A	0.218/5.54	40	Thru-Hole Jack
01385	7	Plug	0.197/5.00	0.155/3.94	0.218/5.54	40	4 Leg Thru Hole
01459	8	Plug	0.246/6.25	0.236/5.99	0.318/8.08	30	M4X.7 Thread Mount

Part #	Fig. #	Gender	Hgt. (H5)/mm	Dia. (D3)/mm	Temp Max	Description
01208-2	10	N/A	0.249/6.32	0.272/6.91	200 ° F	Cap
01332-2	10	N/A	0.144/3.66	0.272/6.91	200 ° F	Cap

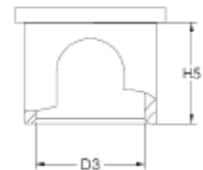


Fig. 10

Connecting Innovation to Application®