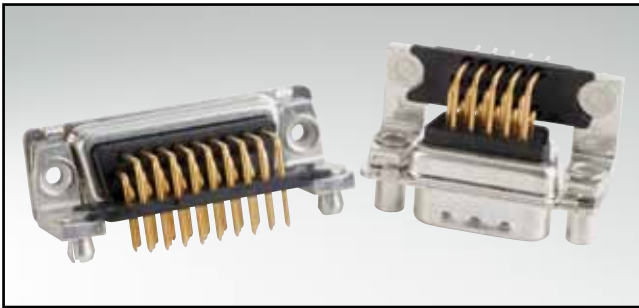


D-SUB HIGH DENSITY

Solder pin – Angled – .350"/7.98 mm – Precision machined contacts – Metal bracket

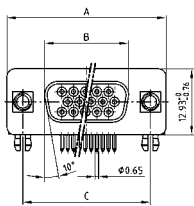


RoHS compliant – CSA listed, File No.: LR 115000-1 – UL listed, File No.: E202784

DESCRIPTION

- Mounting styles:
 - with mounting bracket, PCB clip and 4-40 UNC or M3 threaded insert
 - with mounting bracket, PCB clip and 4-40 UNC or M3 front spacer
- Quality class 3 (also available in quality class 1)
- Shell: Steel tin plated (brass tin plated or stainless steel available on request)

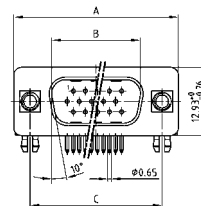
SOCKET CONNECTOR



No. of pos.	A -0.76	B -0.25	C
15	31.19	16.46	25.00 +0.12
26	39.52	24.79	33.30 +0.15 -0.10
44	53.42	38.50	47.04 +0.13
62	69.70	54.96	63.50 +0.13
78	67.31	52.55	61.10 +0.14 -0.11

PCB layout: Kat1iU1A

PLUG CONNECTOR

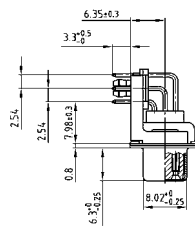
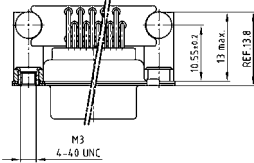


No. of pos.	A -0.76	B +0.25	C	D -0.3
15	31.19	16.79	25.00 -0.12	6.12
26	39.52	25.12	33.30 +0.15 -0.10	6.12
44	53.42	38.84	47.04 +0.13	5.99
62	69.70	55.30	63.50 +0.13	5.99
78	67.31	52.68	61.10 -0.14 -0.11	5.99

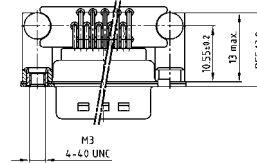
PCB layout: Kat1iU2A

15-62 pos.

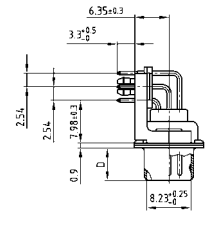
Mounting style: PCB clip, threaded insert



Mounting style: PCB clip, threaded insert

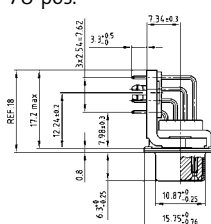
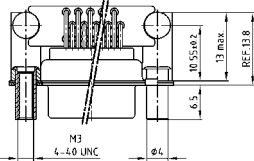


15-62 pos.

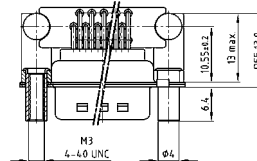


78 pos.

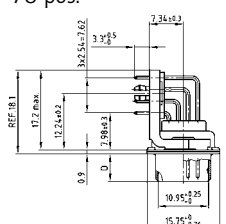
Mounting style: PCB clip, front spacer



Mounting style: PCB clip, front spacer



78 pos.



ORDER DATA

SOCKET CONNECTOR		
No. of pos.	Mounting style	Part Number
15	PCB clip / 4-40 UNC Threaded insert	164 A 18179 X
26	PCB clip / 4-40 UNC Threaded insert	164 A 18189 X
44	PCB clip / 4-40 UNC Threaded insert	164 A 18199 X
62	PCB clip / 4-40 UNC Threaded insert	164 A 18209 X
78	PCB clip / 4-40 UNC Threaded insert	164 A 18629 X
15	PCB clip / M3 Threaded insert	164 A 18219 X
26	PCB clip / M3 Threaded insert	164 A 18229 X
44	PCB clip / M3 Threaded insert	164 A 18239 X
62	PCB clip / M3 Threaded insert	164 A 18249 X
78	PCB clip / M3 Threaded insert	164 A 18639 X
15	PCB clip / 4-40 UNC Front spacer	164 A 18259 X
26	PCB clip / 4-40 UNC Front spacer	164 A 18269 X
44	PCB clip / 4-40 UNC Front spacer	164 A 18279 X
62	PCB clip / 4-40 UNC Front spacer	164 A 18289 X
78	PCB clip / 4-40 UNC Front spacer	164 A 18649 X
15	PCB clip / M3 Front spacer	164 A 18299 X
26	PCB clip / M3 Front spacer	164 A 18309 X
44	PCB clip / M3 Front spacer	164 A 18319 X
62	PCB clip / M3 Front spacer	164 A 18329 X
78	PCB clip / M3 Front spacer	164 A 18659 X

PLUG CONNECTOR		
No. of pos.	Mounting style	Part Number
15	PCB clip / 4-40 UNC Threaded insert	163 A 17769 X
26	PCB clip / 4-40 UNC Threaded insert	163 A 17779 X
44	PCB clip / 4-40 UNC Threaded insert	163 A 17789 X
62	PCB clip / 4-40 UNC Threaded insert	163 A 17799 X
78	PCB clip / 4-40 UNC Threaded insert	163 A 18219 X
15	PCB clip / M3 Threaded insert	163 A 17809 X
26	PCB clip / M3 Threaded insert	163 A 17819 X
44	PCB clip / M3 Threaded insert	163 A 17829 X
62	PCB clip / M3 Threaded insert	163 A 17839 X
78	PCB clip / M3 Threaded insert	163 A 18229 X
15	PCB clip / 4-40 UNC Front spacer	163 A 17849 X
26	PCB clip / 4-40 UNC Front spacer	163 A 17859 X
44	PCB clip / 4-40 UNC Front spacer	163 A 17869 X
62	PCB clip / 4-40 UNC Front spacer	163 A 17879 X
78	PCB clip / 4-40 UNC Front spacer	163 A 18239 X
15	PCB clip / M3 Front spacer	163 A 17889 X
26	PCB clip / M3 Front spacer	163 A 17899 X
44	PCB clip / M3 Front spacer	163 A 17909 X
62	PCB clip / M3 Front spacer	163 A 17919 X
78	PCB clip / M3 Front spacer	163 A 18249 X

PCB clip .122"/3.1 ± .004"/0.10 mm hole diameter and .063"/1.6 mm circuit board thickness