

toggle switch 6,35 mm dia.



recommended accessories:

	no. of poles	material of contacts	Switching position	connection method	colour	part no.	circuit drawing	technical drawing	mounting dimension
toggle switch 6,35 mm dia. packaging of 10 pcs.	2	silver	2 (maintained action)	soldering terminal	chromium-plated	02.17312.21	1	1	1
packaging of 20 pcs.	1	gold	2 (maintained action)	soldering terminal	chromium-plated	11.17352.21	2	2	1
		silver	2 (maintained action)	soldering terminal	chromium-plated	01.17301.21	2	2	1

technical drawing as of page DJET.7, mounting dimensions as of page DJET.10, circuit drawing as of page DJET.11

toggle switch 10 mm dia.



recommended accessories:

	no. of poles	front protection	material of contacts	Switching position	connection method	colour	part no.	circuit drawing	technical drawing	mounting dimension	
toggle switch 10 mm dia. packaging of 10 pcs.	1	IP 67	gold	2 (maintained action)	soldering terminal	matt black	11.17201.30	3	3	2	
						matt chromium-plated	11.17201.22	3	3	2	
				silver	2 (maintained action)	soldering terminal	matt chromium-plated	11.17271.22	3	3	2
		without	gold	2 (maintained action)	soldering terminal	chromium-plated	11.17051.21	3	4	2	
			silver	2 (maintained action)	soldering terminal	chromium-plated	01.17001.21	3	4	2	
		2	IP 67	silver	2 (maintained action)	soldering terminal	matt chromium-plated	12.17273.22	1	5	2
		without	gold	2 (maintained action)	soldering terminal	chromium-plated	12.17063.21	1	5	2	
			silver	2 (maintained action)	soldering terminal	chromium-plated	02.17013.21	1	5	2	

[technical drawing as of page DJET.7.](#) [mounting dimensions as of page DJET.10.](#) [circuit drawing as of page DJET.11](#)

pushbutton 6,35 mm dia.



recommended accessories:

	no. of poles	material of contacts	contacts	connection method	colour	part no.	circuit drawing	technical drawing	mounting dimension
pushbutton 6,35 mm dia. packaging of 10 pcs.	1	gold	2(momentary action)	soldering terminal	chromium-plated	17.17851.21	3	6	1
					matt black	17.17851.30	3	6	1
		silver	2(momentary action)	soldering terminal	chromium-plated	07.17801.21	3	6	1

[technical drawing as of page DJET.7.](#) [mounting dimensions as of page DJET.10.](#) [circuit drawing as of page DJET.11](#)

pushbutton 10 mm dia.



recommended accessories:

	no. of poles	front protection	material of contacts	contacts	connection method	colour	part no.	circuit drawing	technical drawing	mounting dimension	
pushbutton 10 mm dia. packaging of 10 pcs.	1	IP 67	gold	2(momentary action)	soldering terminal	matt black	17.17252.30	3	7	2	
						matt chromium-plated	17.17252.22	3	7	2	
				silver	2(momentary action)	soldering terminal	matt chromium-plated	17.17282.22	3	7	2
		without	gold	2(momentary action)	soldering terminal	chromium-plated	17.17552.21	3	8	2	
				matt black		17.17551.30	3	9	2		
						17.17552.30	3	8	2		
	2	IP 67	gold	2(momentary action)	soldering terminal	chromium-plated	18.17253.22	1	10	2	
						matt black	18.17253.30	1	10	2	
			silver	2(momentary action)	soldering terminal	chromium-plated	18.17283.22	1	10	2	
without		gold	2(momentary action)	soldering terminal	chromium-plated	18.17563.21	1	11	2		
		silver	2(momentary action)		chromium-plated	08.17513.21	1	11	2		

technical drawing as of page DJET.7. mounting dimensions as of page DJET.10. circuit drawing as of page DJET.11

protective cap for toggle switch 10 mm dia.



recommended accessories:

-

	colour	part no.	technical drawing
protective cap for toggle switch 10 mm dia. for type 12.17063.21, 02.17013.21 packaging of 10 pcs.	chromium-plated	20.17291.21	12

[technical drawing as of page DJET.7](#)

cap for pushbutton 6,35 mm dia.



recommended accessories:

-

	colour	part no.	technical drawing	mounting dimension
cap for pushbutton 6,35 mm dia. packaging of 10 pcs.	black	20.17804.01	13	-
	red	20.17804.02	13	-

[technical drawing as of page DJET.7](#), [mounting dimensions as of page DJET.10](#)

cap for pushbutton 10 mm dia.



recommended accessories:

-

	dimension	colour	part no.	technical drawing	mounting dimension
cap for pushbutton 10 mm dia. packaging of 10 pcs.	Ø 13 mm	black	20.17504.01	14	-
		red	20.17504.02	14	-

technical drawing as of page DJET.7, mounting dimensions as of page DJET.10

protective cap for pushbutton 10 mm dia.



recommended accessories:

-

	colour	part no.	technical drawing	mounting dimension
protective cap for pushbutton 10 mm dia. for type 18.17563.21, 18.17563.30, 08.17513.21 packaging of 10 pcs.	chromium-plated	20.17292.21	15	-

technical drawing as of page DJET.7, mounting dimensions as of page DJET.10

DJET

electrical characteristics

contact resistance

< 10 mΩ

current nominal

minimum:

silver contacts: 50 mA,

gold contacts: 100 μA

insulation resistance

at 500 VDC: > 100'000 MΩ

life time

100'000 operations

switch rating

220 VAC/1,5 A

110 VAC/2,5 A

voltage

minimum:

silver contacts: 10 V

gold contacts: 10 mV

mechanical characteristics

contacts

gold contacts: gold/gold plated brass contacts,

silver contacts: solid silver/silver-plated contacts

resistance to shock

(IEC 512-4) 100 g

resistance to vibrations

(IEC 512-4) 10 to 2000 Hz, 10 cycles, 10 g

climatic characteristics

damp heat

56 days

sealing

as per version: to IP 67

service temperature

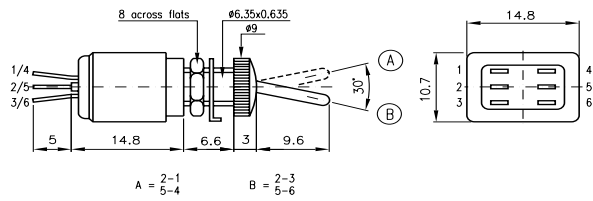
-40°C to + 85°C

storage temperature

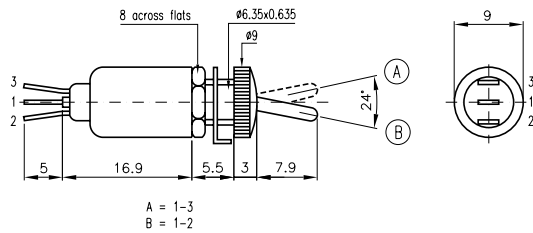
-40°C to + 85°C

Technical Drawing

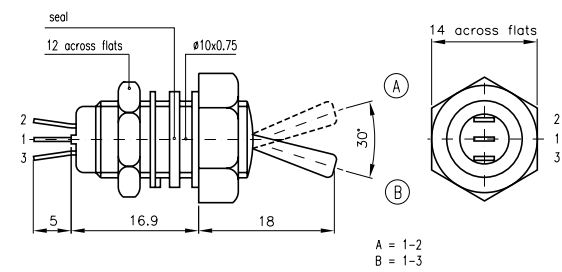
1 toggle switch 6,35 mm dia.
page DJET.1



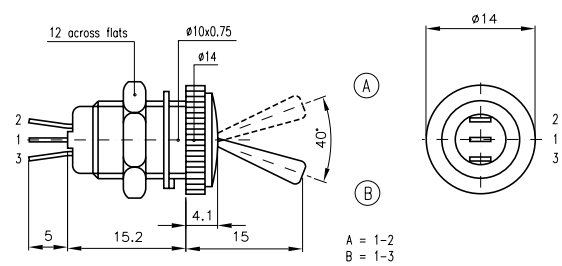
2 toggle switch 6,35 mm dia.
page DJET.1



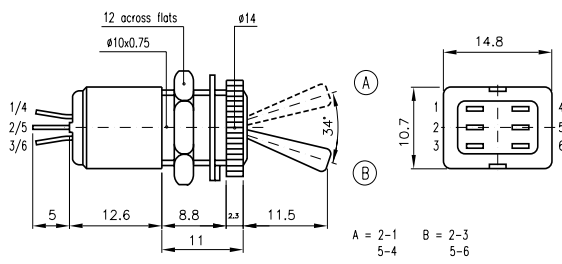
3 toggle switch 10 mm dia.
page DJET.2



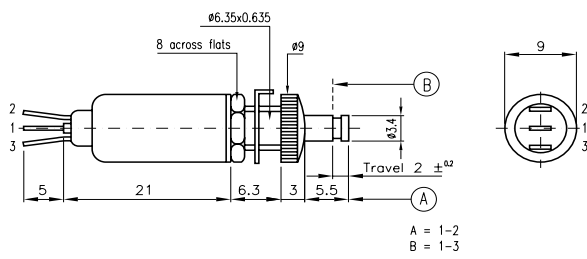
4 toggle switch 10 mm dia.
page DJET.2



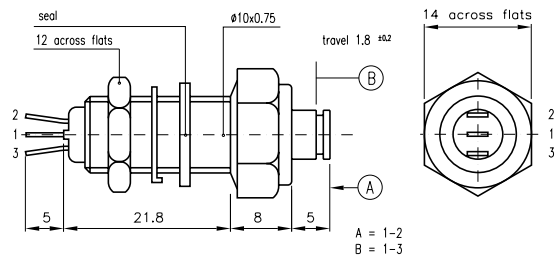
5 toggle switch 10 mm dia.
page DJET.2



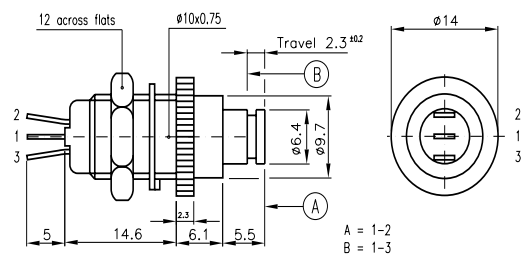
6 pushbutton 6,35 mm dia.
page DJET.2



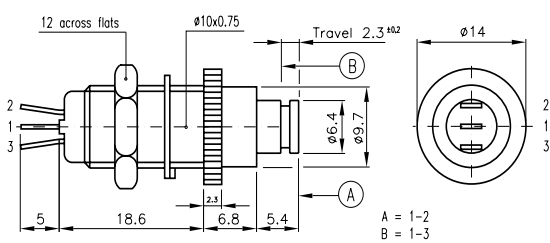
7 pushbutton 10 mm dia.
page DJET.3



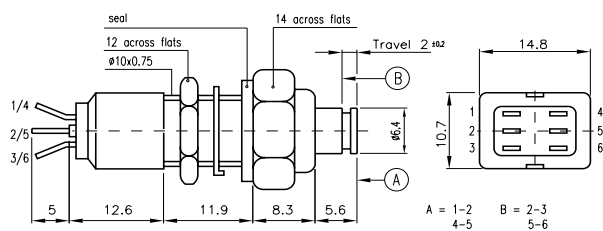
8 pushbutton 10 mm dia.
page DJET.3



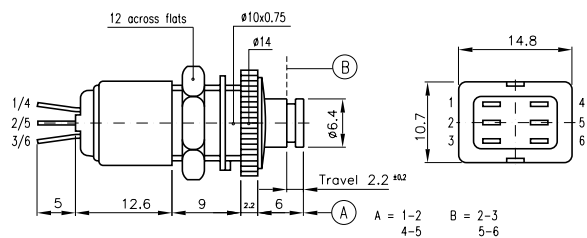
9 pushbutton 10 mm dia.
page DJET.3



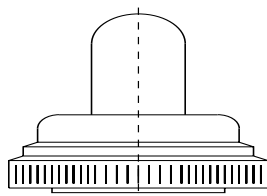
10 pushbutton 10 mm dia.
page DJET.3



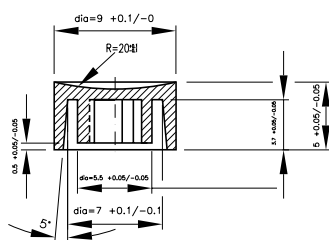
11 pushbutton 10 mm dia.
page DJET.3



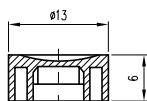
12 protective cover for toggle switch 10 mm dia.
page DJET.4



13 cap for pushbutton 6,35 mm dia.
page DJET.4

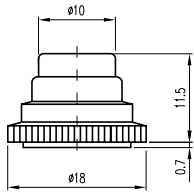


14 cap for pushbutton 10 mm dia.
page DJET.5



15 protective cap for pushbutton 10 mm dia.
page DJET.5

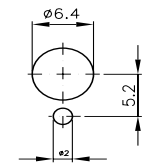
Silicone sealed caps



Mounting Dimension

1 toggle switch 6,35 mm dia., pushbutton 6,35 mm dia.
page DJET.1, DJET.2

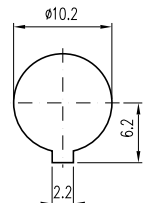
FRONT PANEL
MOUNTING HOLE:



Tolerance +0.1
-0

2 toggle switch 10 mm dia., pushbutton 10 mm dia.
page DJET.2, DJET.3

FRONT PANEL
MOUNTING HOLE:



Tolerance +0.1
-0 mm

	circuit drawing
1	
2	
3	