

# southco

PROPRIETARY ITEM - EXCEPT FOR USES EXPRESSLY GRANTED IN WRITING INFORMATION DISCLOSED HEREON IS CONFIDENTIAL AND ALL RIGHTS PATENT AND OTHERWISE ARE RESERVED BY SOUTHCO, INC.

## SOUTHCO No.82 STUD FASTENER, BAIL STYLE, RA

DATE	DRAWN	CHKD	SCALE	DRAWING NUMBER
08JUN99	MDM	CHW	2 : 1	J-82-15

REV.	DATE	DRAWN	REVISION	PART No.	MATERIAL	FINISH
A	20JUL99	MDM	PRN: 82-456A	SEE TABLE	SEE NOTE A	SEE NOTE B
B	19MAR07	DAW	PRN: P2007-1398			
C	09FEB09	CHW	PRN: P2009-0139			

INCH DIMENSIONS  
DIMENSIONS WITHOUT TOLERANCES ARE FOR REFERENCE ONLY.

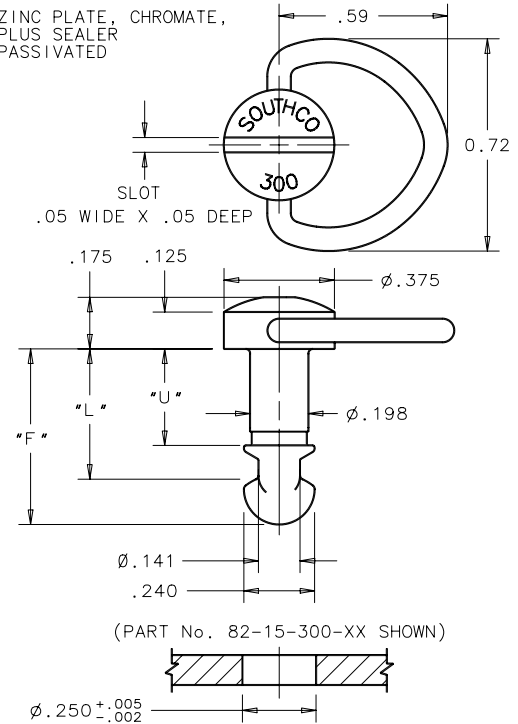


NOTES: A. MATERIAL: XX = -16: STUD - LOW CARBON STEEL, CASE HARDENED, BAIL - LOW CARBON STEEL  
= -20: BAIL AND STUD - STAINLESS STEEL

B. FINISH: XX = -16: ZINC PLATE, CHROMATE, PLUS SEALER  
= -20: PASSIVATED

PART No.	U	L	F
82-15-040-XX	.067	.185	.335
82-060-	.087	.205	.355
82-080-	.107	.225	.375
82-100-	.127	.245	.395
82-120-	.147	.265	.415
82-140-	.167	.285	.435
82-160-	.187	.305	.455
82-180-	.207	.325	.475
82-200-	.227	.345	.495
82-220-	.247	.365	.515
82-240-	.267	.385	.535
82-260-	.287	.405	.555
82-280-	.307	.425	.575
82-300-	.327	.445	.595
82-320-	.347	.465	.615
82-340-	.367	.485	.635
82-360-	.387	.505	.655
82-380-	.407	.525	.675
82-400-	.427	.545	.695
82-420-	.447	.565	.715
82-440-	.467	.585	.735
82-460-	.487	.605	.755
82-480-	.507	.625	.775
82-500-	.527	.645	.795
82-15-520-XX	.547	.665	.815

PART No.	U	L	F
82-15-540-XX	.567	.685	.835
82-560-	.587	.705	.855
82-580-	.607	.725	.875
82-600-	.627	.745	.895
82-620-	.647	.765	.915
82-640-	.667	.785	.935
82-660-	.687	.805	.955
82-680-	.707	.825	.975
82-700-	.727	.845	.995
82-720-	.747	.865	1.015
82-740-	.767	.885	1.035
82-760-	.787	.905	1.055
82-780-	.807	.925	1.075
82-800-	.827	.945	1.095
82-820-	.847	.965	1.115
82-840-	.867	.985	1.135
82-860-	.887	1.005	1.155
82-880-	.907	1.025	1.175
82-900-	.927	1.045	1.195
82-920-	.947	1.065	1.215
82-940-	.967	1.085	1.235
82-960-	.987	1.105	1.255
82-980-	1.007	1.125	1.275
82-15-1000-XX	1.027	1.145	1.295



SUGGESTED PANEL PREPARATION