

## KM6-II subracks: Front panels

To meet the needs of subrack users, we offer a wide range of product conforming to IEC 60297-3 DIN 41494. Versatility is increased by the provision of separate card mounting devices, chosen to suit the user's needs.

With the exception of EMC front panels, which are vertically grained with fixed metal retaining screw inserts, most types are horizontally grained with separate inserts.

Where plastic inserts are supplied as standard, they can be replaced by a unique metal insert. This insert can be applied by hand; application of the special front panel screw provides a reliable earth continuity to the panel.

Front panels in this section are shown in various versions:

### Version 1 (prefixed 957)

These EC variants which are supplied in kit form are manufactured from pre-anodised material and, therefore, the front and rear faces of the panels are anodised. This method of production produces cut edges, but these would not be visible in normal use.

Version 1 panels are supplied as standard with plastic inserts which can be replaced with a metal type (see page75)

### Version 2 (prefixed 953)

This type of panel is supplied in kit form and features an anodised front face and a chromated, conductive, inner face to provide a conductive path to the front extrusions and to allow for electrical grounding of front panel mounted components.

Version 2 panels are supplied with metal inserts as standard.

### Version 3 – Hinged Front Panels (prefixed 953)

These panels are a decorative type, being entirely anodised after manufacture. They are supplied in kit form plastic inserts which can be replaced with a metal type (see page75).

### **BULK PACKING**

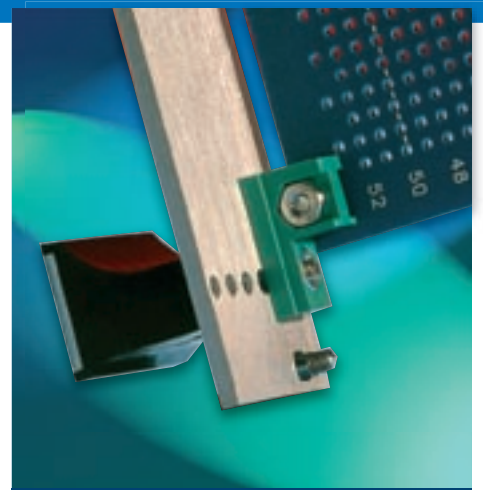
In addition to separate kits and subject to a minimum order quantity, we can supply front panels in a bulk packed form, ie with the various components packed together. This offers cost savings in both packing and unpacking time and the volume of packing materials used.

### **FRONT PANEL CUSTOMISING SERVICE**

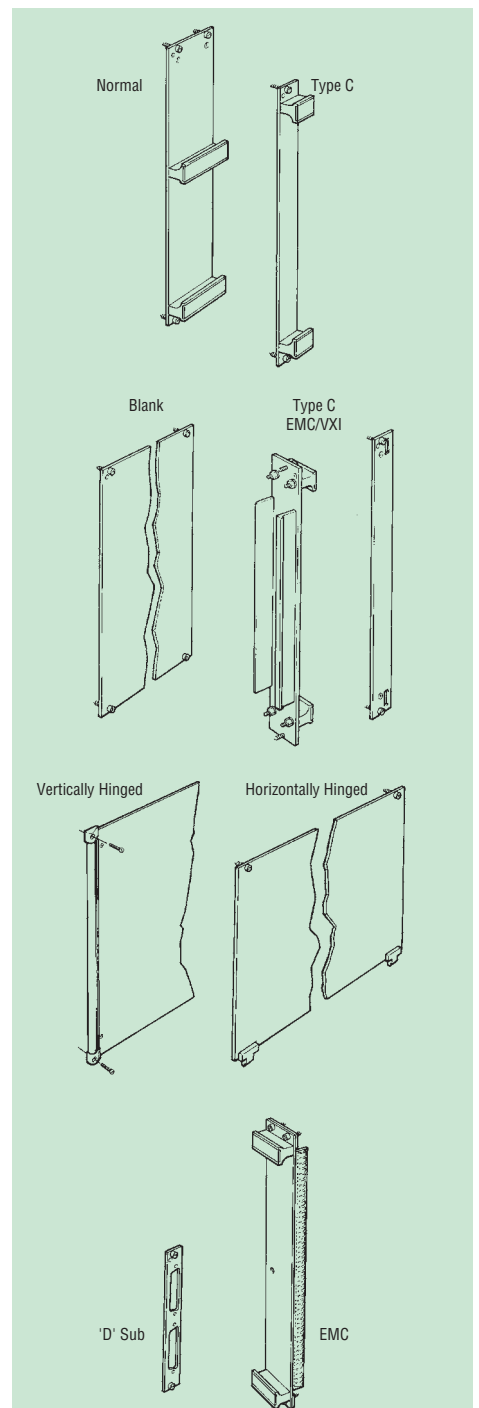
In addition to our range of standard front panels we can provide product customised to your requirements:

- Quick quotation
- Punching and milling
- Screen printing - sub surface (anodised finish only) / or normal surface type
- Finishing - anodising / chromating / painting
- Special sizes
- Kit / bulk pack / assembly
- Fast turn-round option

Our Sales Office will be happy to supply you with more information or to arrange a quotation on receipt of your requirements.



Front panels



# KM6-II Subracks: Front panels

## BLANK FRONT PANELS 3U AND 6U

- Conform to IEC 60297-3 and DIN 41494
- Comprehensive range of widths, available in kit or bulk pack form



Having only the standard sight hole and retaining screw holes, these panels have no handles, leaving the total area free for the mounting of instruments, switches, meters, etc. They can also be used at the rear of a subrack for mounting plug and socket connectors.

Version 1 have anodised front and inner faces. The method of manufacture produces cut edges which will not be visible in normal use. Version 1 panels can be identified by their 957 prefix. Material grain is horizontal and the kit includes plastic retaining inserts as standard. These inserts can be replaced with a metal type (see page75).

## BULK PACKING

Subject to minimum quantities, we can supply front panel kits in bulk, offering savings in packaging and unpacking time. Please specify 'BULK PACK' when ordering.

## Contents of kits

Description	Material
Front panel	2,5mmg ALMg3 ½ hd anodised
Special screw	M2,5 x 11mm
Retaining insert	Plastic – see text above

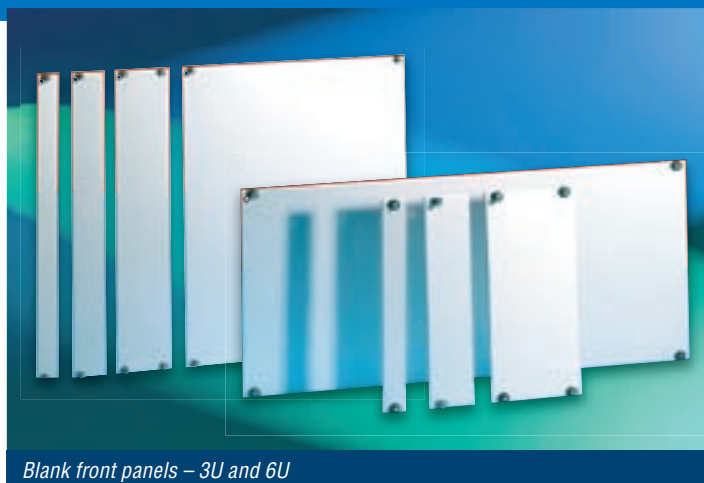
## Ordering information

Description: Blank panels 3U, version 1

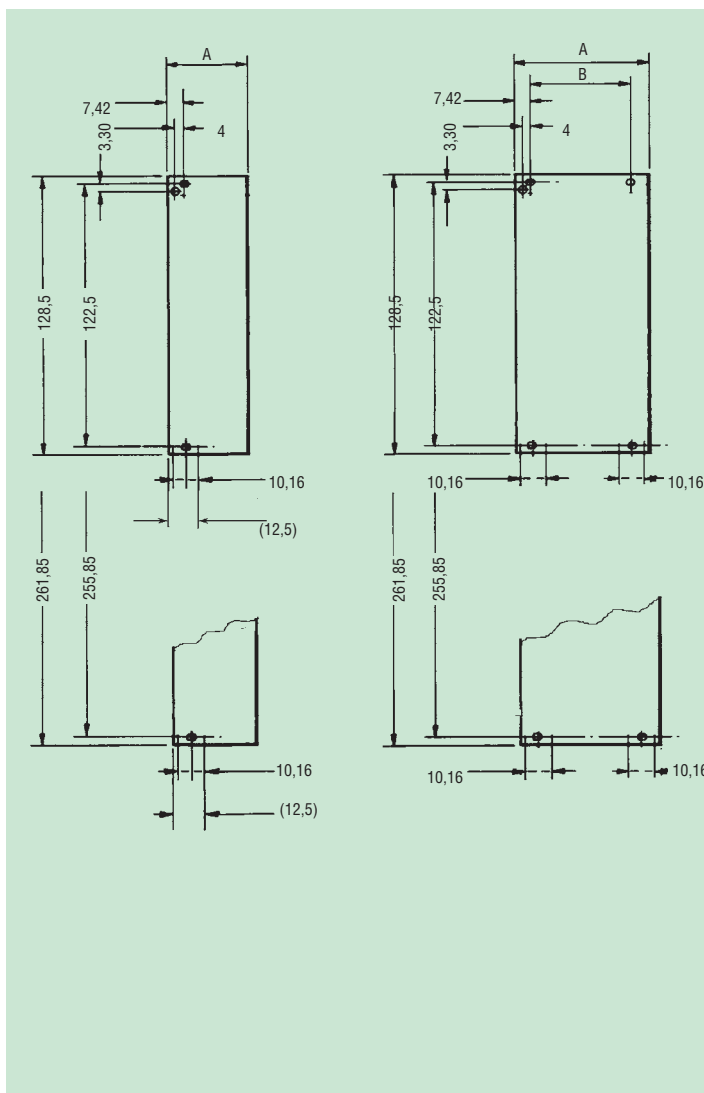
Width	A	B	Order code
2HP	9,8	–	957-236038J
3HP	14,84	–	957-236041J
4HP	19,92	–	957-236042G
5HP	25	–	957-236043E
6HP	30,08	–	957-236044C
7HP	35,16	–	957-236045A
8HP	40,24	–	957-236046K
9HP	45,32	–	957-236047H
10HP	50,4	35,56	957-236056G
12HP	60,56	45,72	957-236057E
14HP	70,72	55,88	957-236059A
21HP	106,28	91,44	957-236061C
24HP	121,52	106,68	957-236062A
42HP	212,96	198,12	957-236063K
60HP	304,4	289,56	957-236064H
84HP	426,32	411,48	957-236065F

Description: Blank front panels 6U - version 1

2HP	9,8	–	957-236048F
3HP	14,84	–	957-236049D
4HP	19,92	–	957-236050H
5HP	25	–	957-236051F
6HP	30,08	–	957-236052D
7HP	35,16	–	957-236053B
8HP	40,24	–	957-236054L
9HP	45,32	–	957-236055J
10HP	50,4	35,56	957-236066D
12HP	60,56	45,72	957-236067B
14HP	70,72	55,88	957-236068L
21HP	106,28	91,44	957-236069J
24HP	121,52	106,68	957-236070B
42HP	212,96	198,12	957-236071L
60HP	304,4	289,56	957-236072J
84HP	426,32	411,48	957-236073G



Blank front panels – 3U and 6U



Order separately

Product	Page
Additional card mounting brackets	57
Screws, bushes and fixings	75

# KM6-II Subracks: Front panels

## STANDARD TYPE 3U AND 6U

- Two versions, available in comprehensive range of widths
- Supplied in kit or bulk pack form
- Conforms to IEC 60297-3 and DIN 41494



**Version 1** has anodised front and inner faces. The method of manufacture produces cut edges which are invisible in normal use. Material grain is horizontal. The kit includes as standard plastic retaining inserts, which can be replaced with a metal type.

**Version 2** has an anodised front face and a chromated, conductive inner face for grounding purposes. Supplied with metal retaining inserts as standard.

## BULK PACKING

Subject to minimum quantities, we can supply front panel kits in bulk, offering savings in packaging and unpacking time. Please specify 'BULK PACK' when ordering.

## Contents of kits

Item	Description	Material
1	Front panel	2,5mm ALMg3 1/2 hd
2	Handle	Luranyl 2452/1, black
3	Ident label	1,5mm A1Mg3 1/2 hd anodised
4	Screw M2, 5 x 16	
5	Screw M2, 5 x 7	
6	Special screw M2,5 x 11	
7	Nut M2,5	
8	Shakeproof washer M2,5	
9	Retaining insert	See Text
Assembly instructions		

## Ordering information

Description: Standard front panels - 3U

Panel width	Dim 'A'	Dim 'B'	Order code	
			Version 1	Version 2
3HP	14,8	-	957-235347A	953-235335G M
4HP	19,9	-	957-235348K	953-235336E
5HP	25,0	-	957-235349H	953-235339K
6HP	30,1	-	957-235351K	953-235340C
7HP	35,2	-	957-235352H	953-235341A M
8HP	40,2	-	957-235353F	953-235342K
9HP	45,3	-	957-235354D	953-235376D M
10HP	50,4	35,6	957-235355B	953-235343H M
12HP	60,6	45,7	957-235356L	953-235344F M
14HP	70,7	55,9	957-235357J	953-235345D M
21HP	106,3	91,4	957-235358G	953-235346B M
24HP	121,5	106,7	957-235359E	-
42HP	213,0	198,1	957-235360J	-
84HP	426,3	411,5	957-236065F*	-

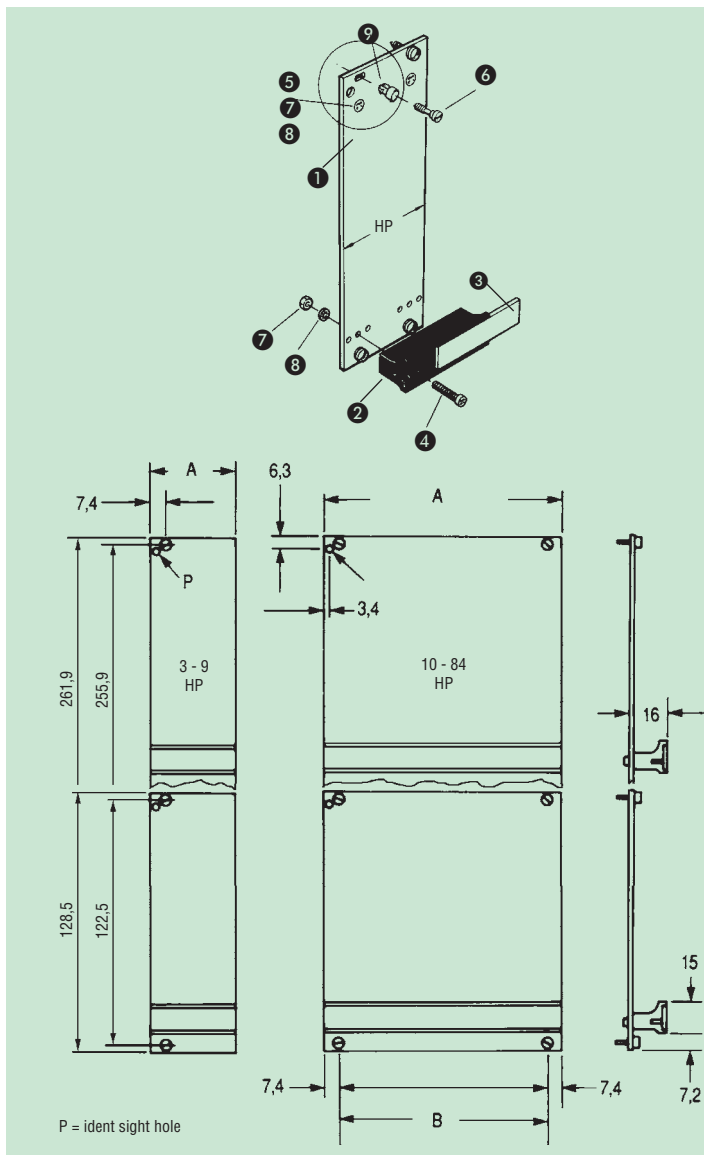
Description: Standard front panels - 6U

Panel width	Dim 'A'	Dim 'B'	Order code	
			Version 1	Version 2
4HP	19,9	-	957-235459A	953-235442F M
5HP	25,0	-	957-235460E	-
6HP	30,1	-	957-235461C	953-235444B M
7HP	35,2	-	957-235462A	-
8HP	40,2	-	957-235463K	953-235446J M
10HP	50,4	35,6	957-235465F	-
12HP	60,6	45,7	957-235466D	953-235449C M
14HP	70,7	55,9	957-235467B	-
24HP	121,5	106,7	957-235469J	-
42HP	213,0	198,1	957-235470B	-
84HP	426,3	411,5	957-236073G*	-

M = Denotes minimum order quantity, please contact our sales office. \* This item has no handles



Standard type - 3U



Order separately

Product	Page
Additional card mounting brackets	57
Slimline extruded handles	61
Screws, bushes and fixings	75

# KM6-II Subracks: Front panels

## TYPE C FRONT PANEL



- Handles top and bottom for maximum component space
- Easier connector disengagement
- Typical layout for VME bus plug-in units

**Version 1** has anodised front and inner faces. The method of manufacture produces cut edges which will not be visible in normal use. Version 1 panels can be identified by their 957 prefix. Material grain is horizontal and the kit includes plastic retaining inserts as standard. These inserts can be replaced with a metal type.

**Version 2** has an anodised front face and a chromated, conductive inner face for grounding purposes. Supplied with metal retaining inserts as standard. Version 2 panels are prefixed with 953.

## BULK PACKING

Subject to minimum quantities, we can supply front panel kits in bulk, offering savings in packaging and unpacking time. Please specify 'BULK PACK' when ordering.

## Contents of kits

Description	Qty.	Material
Front panel	1	2,5mmg ALMg3 ½ hd
Handles	2	Luranylo 2452/1,black
Ident labels	2	1,5mmg A1Mg3 ½ hd
Fixings		

## Ordering information

Description: Type C Front panels – version 1

Height	Width	Type	Order code
6U	4HP	Version 1	957-244797B
	8HP	Version 1	957-244798L
9U	4HP	Version 1	957-244799J
	8 HP	Version 1	957-244800F

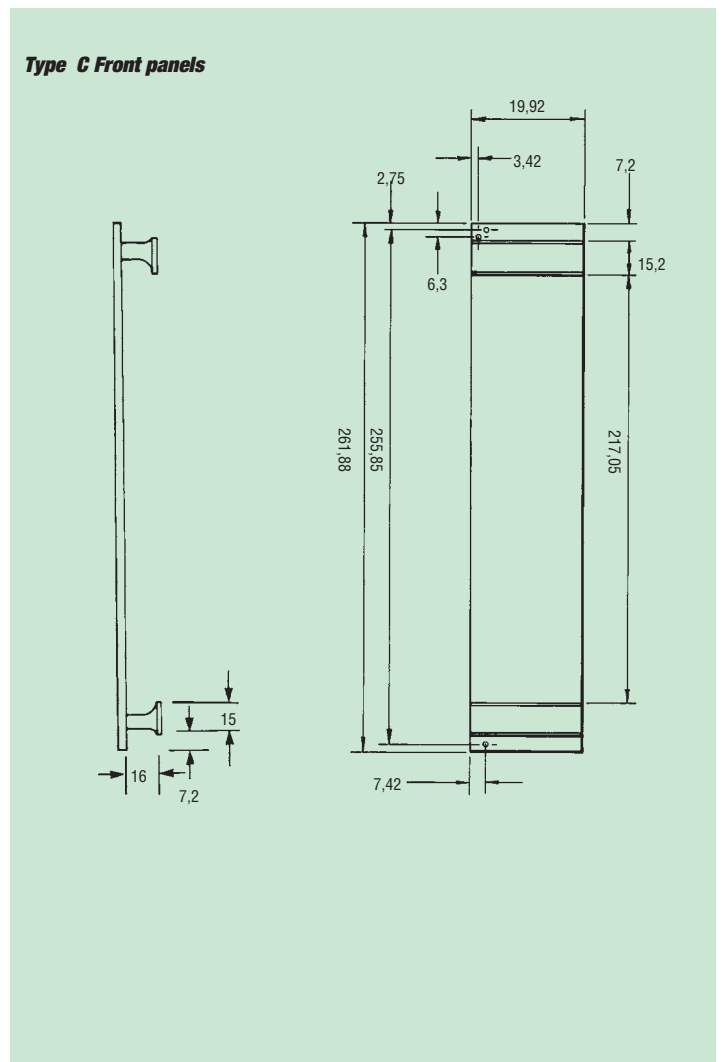
Description: Type C Front panels – version 2

6U	4HP	Version 2	953-236016G
	8HP	Version 2	953-236022A
9U	4HP	Version 2	953-236023K



Type C front panels

## Type C Front panels



## Order separately

Product	Page
Additional card mounting brackets	57
Slimline extruded handles	61
Screws, bushes and fixings	75

# KM6-II Subracks: Front panels

## 4HP EJECTOR HANDLES AND FRONT PANELS

These ejector handles provide mechanical assistance for removing PCBs with high extraction forces. The handle works by bearing on the front extrusion of IEC 60297-3 subracks.



### Features

- Easy extraction of PCBs
- Normal KM6 front panel handle appearance
- Choice of plastic or metal card mounting brackets
- 3U, 6U and 9U x 4hp front panels available with facility for additional mounting bracket fixing

**Version 1** has anodised front and inner faces. The method of manufacture produces cut edges which will not be visible in normal use. Version 1 panels can be identified by their 957 prefix. Material grain is horizontal and the kit includes plastic retaining inserts as standard. These inserts can be replaced with a metal type.

## BULK PACKING

Subject to minimum quantities, we can supply front panel kits in bulk, offering savings in packaging and unpacking time. Please specify '**BULK PACK**' when ordering.

### Contents of kits – Ejector handles

Description	Qty	Material
Pairs of handles (UL94-V0 material)	10	Makrolon 9425 glass filled
Mounting brackets	20	Luranyl 2452/1 or die cast
Hinge pins	20	Brass
Fixings		
Assembly instructions		

### Contents of kits – Front panels

Description	Qty	Material
Front panel	1	2,4mm ALMg3 ½ hd
Handle idents	2	1,5mm ALMg3 ½ hd
Fixings		

### Ordering information

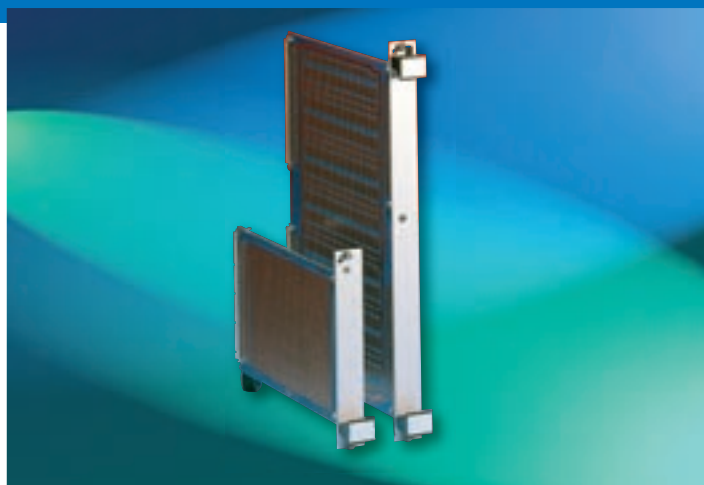
Description		Order code
Ejector handle kit	Plastic brackets	173-202288H
	Metal brackets	173-202287K
3U x 4 HP front panel kit	Version 1	957-244801D
6U x 4 HP front panel kit	Version 1	957-244802B
9U x 4 HP front panel kit	Version 1	957-244803L
4 HP aluminium ident labels (Pk. 10)		174-39403A

## 3U VERSIONS

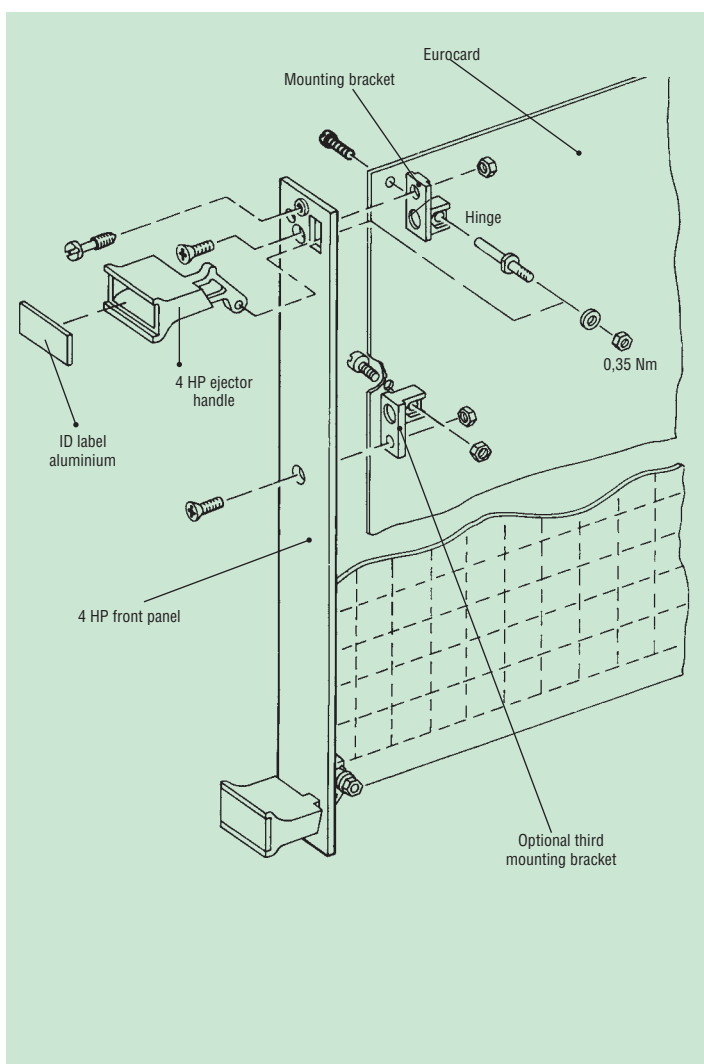
Typically 3U panels have an ejector at the bottom only. These kits contain only 10 bottom handles and associated parts.

### Ordering information

Description		Order code
3U Ejector handle kit	Plastic brackets	173-283274K
	Metal brackets	173-283071B



4HP Ejector handles and front panels



### Order separately

Product	Page
Additional card mounting brackets	57
Screws, bushes and fixings	75

# KM6-II Subracks: Front panel injector/ejector handles

With the high insertion and withdrawal forces associated with high pin count connectors, it is desirable to obtain mechanical advantage. These handles can be used with suitably modified front panels.

- Easy insertion/withdrawal of PCBs
- Straight push-pull action reduces stress on components soldering
- Individual or integrated operating surfaces
- Range of standard panels
- 4HP and 6HP variants

They offer a number of advantages over existing designs. They are available in 4 and 6HP versions, suitable for most standard bus structures; their action, by fitting over the pcb, reduces the sideways forces that can cause damage to soldered components.

The injector/ejector handle can be used either with full width extrusions, or with individual 'saddles' that fit to the front of KM6-II pcb guides. In the latter configuration it is thus possible to address specific, individual plug-in units without contravening the front aperture specified in IEC 60297-3.

6U front panels are available, ready to accept the handle and mounting brackets, in 4HP and 6HP widths in flat and EMC versions.

## Contents of kit – Handle kit

Description	Qty.	Material/Finish
Handles and brackets	10prs	AL alloy to BS 1474 HE9 TF, Etch and clear anodise
Speedwire brackets		
Fixings		
Instructions		

## Contents of kit – Saddle kit

Description	Qty.	Material/Finish
Saddles	10 prs	AL alloy to BS 1474 HE9 TF
Tie bar (top and bottom)	1	Conductive

## Contents of kit – Front panel kits

Description	Qty.	Material/Finish
Front panel plus fixing brackets	1	2,5mg AL BS 1470 NS4 1/2H
EMC front panels		Two parts from 1,2mg AL, BS 1470 NS4 1/2H, Facia panel etch and anodised, inner panel conductive,

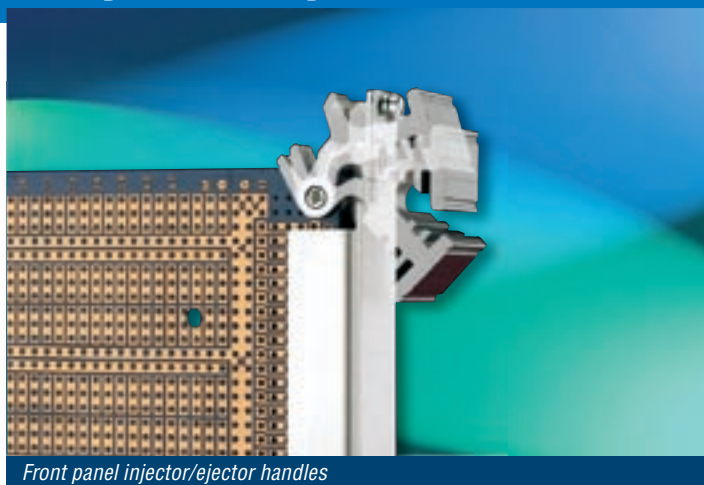
## Ordering information

Description	Qty.	Order code
4HP Injector/ejector handle kit	10 prs	951-232416E
6HP Injector/ejector handle kit	10 prs	951-232417C
Guide mounted saddle kit	10 prs	951-232404A
84HP front extrusion (top or bottom)	1	951-232445J

Description: Front panels for injector/ejector

Height	Width	Panel type	Order Code
6U	4HP	Version 1	957-239589A
	6HP	Version 1	957-239590K
	4HP	EMC	951-232371A
	6HP	EMC	951-232372K

Note: EMC panels are vertical grain, metal inserts



# KM6-II Subracks: Front panels

## EMC FRONT PANELS



### Features

- 3U, 6U, 9U
- Various widths
- Anodised fascia, conductive inner panel
- Conforms to IEC 60297-3 and DIN 41494
- Aluminium ident labels provided
- Fast, easy assembly

### Applications

Basically designed for use with KM6-II and KM6-EC screened subracks, these front panel kits can be used in situations where front panel emission requires control. Construction is two part, with a conductive inner panel and an anodised fascia panel to avoid the fingering marks associated with conductive aluminium finishes.

Front panel grain is vertical, 6U and 9U are 'C' type. Circuit boards are mounted on separate card mounting brackets as required  
Beryllium copper fingers should be ordered separately.

Please see page 9 for 'A guide to the screening of EMC subracks'.

### Contents of kits

Description	Material
Facia panel	1,2 Aluminium alloy etch and anodised
Inner panel	1,2 Aluminium alloy, conductive finish
Handles	Moulding Noryl SE1 ,black
Handle inserts	Metal 1,5mm Aluminium
Fixings	

### Ordering information

	Order code	Order code	Order code
Width	3U	6U	9U
4HP	951-242963C	951-242969B	951-242975G
6HP	951-242964A	951-242970F	-
8HP	951-242965K	951-242971D	-
12HP	-	951-242972B	-
24HP	951-242968D	-	-
40HP	-	950-221649A	-

### RFI FINGER STRIP

Supplied in lengths of 381mm consisting of 60 fingers. The fingers are self adhesive for easy application and replacement in the field. The quantity of fingers fitted at any panel/subrack interface is selected according to the performance required from the overall screen. Please see page 9 for details. They can be cut using a sharp pair of scissors, taking care to avoid crushing during cutting.

RFI finger strip material: Beryllium copper

### Ordering information

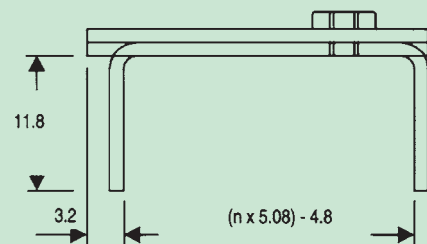
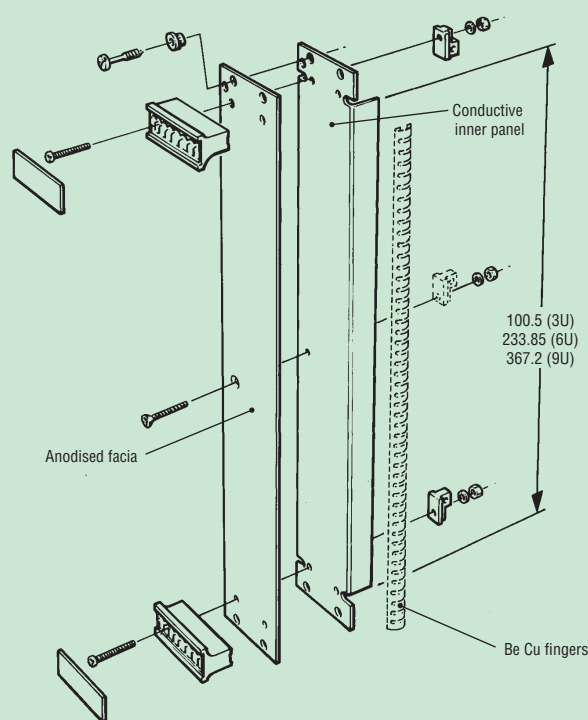
Description	Length	Order code
RFI Finger strip	381mm (60 fingers)	930-238243F

In addition to the front panels on this page, we also offer full width EMC closing panels (see page 23), screened modules (please refer to page 70) and VXI modules and front panels (pages 76 and 77).



EMC front panels

### Construction



### Order separately

Product	Page
Additional card mounting brackets	57
Slimline extruded handles	61
BeCu RFI fingers	See code above

# KM6-II Subracks: PCB Mounting brackets

To ensure complete versatility, all card mounting brackets are supplied in a kit separate to the aluminium front panel. The brackets are available in various forms to suit different applications.

## Contents of kits

Description	Qty.	Material
Normal bracket	10	Luranyl $\alpha$ 2452/1, green or die cast zinc
Wire wrap bracket	10	Luranyl $\alpha$ 2452/1, black
VME bracket	10	Luranyl $\alpha$ 2452/1, black
Speedwire bracket	10	Aluminium extrusion

## NORMAL PCB MOUNTING BRACKETS

The normal PCB mounting brackets are for use where front panels are mounted into IEC/DIN subracks and caseframes that require the conventional 2,54mm gap between the rear of the front panel and the PCB.

Available in two versions; moulded in Noryl or zinc die-cast. The die cast version is now tapped in both axes, making assembly easier and quicker.

### Ordering information

Description	Order code
10 brackets (plastic) and fixings	173-232669L
10 brackets (metal) and fixings	173-253258D

## WIREWAP PCB MOUNTING BRACKETS

The wire wrap PCB brackets are for use where the card has to be off-set to take account of the length of the wire wrap spills on the printed circuit board. The 2,54mm spacer can be removed for use with cassette modules.

### Ordering information

Description	Order code
10 brackets and fixings	173-232670D

## VME PCB MOUNTING BRACKETS

It is possible to use two types of PCB mounting bracket with VME PCBs. The normal PCB mounting bracket (173-12525B) should be used with 4HP wide panels and the VME mounting bracket below used for 8HP wide panels enabling wire wrap spills to be utilized and still obtaining compatibility with the committed VME backplane.

### Ordering information

Description	Order code
10 brackets and fixings	173-232671B

## SPEEDWIRE PCB MOUNTING BRACKETS

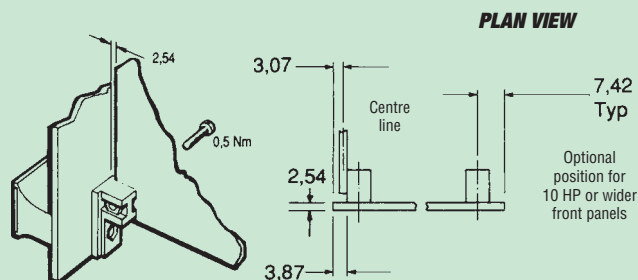
It is necessary when using the 'Speedwire' wiring system that a small off-set is obtained to account for the height of the speedwire contact on the left hand side of the PCB.

### Ordering information

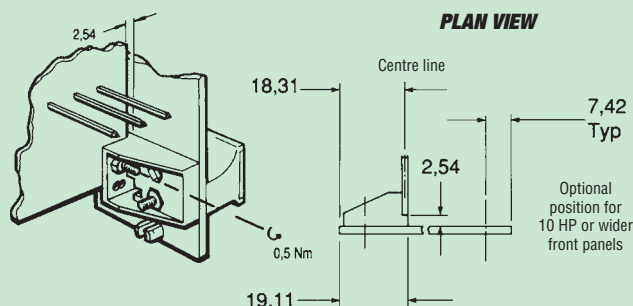
Description	Order code
10 pairs and fixings	173-232672L

Note: Plastics are adversely affected by solvents and care should be taken to avoid contamination of plastic brackets.

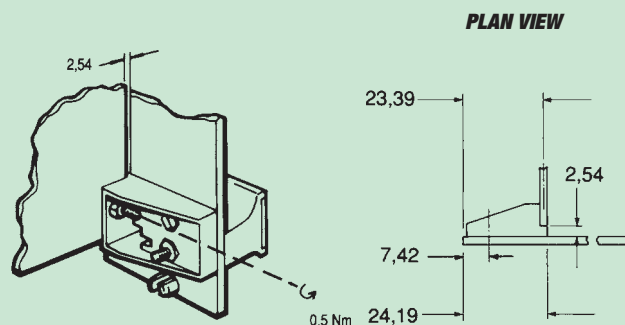
### Normal bracket



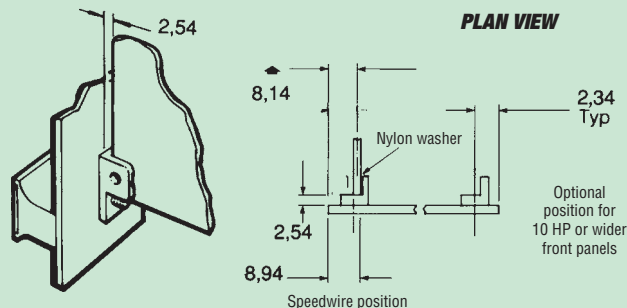
### Wirewrap PCB bracket



### VME PCB bracket



### Speedwire PCB bracket





# KM6-II Subracks: Hinged front panels

## KM6-II HORIZONTALLY HINGED PANEL

Typically used in situations where quick access is needed to equipment, but it is not desirable to remove the panel completely - e.g. as a socket mounting or display panel.

A range of aluminium panels is supplemented by a 3U, 84HP smoked transparent version for use where it is necessary to view instruments or indicators.

Standard kits are supplied with plastic hinges. A die-cast metal hinge kit is available separately as an accessory to replace the plastic type.

**Version 1** has anodised front and rear faces. The method of manufacture produces cut edges which are invisible in normal use. The kit includes plastic retaining inserts and plastic hinges as standard. Both plastic inserts and hinges can be replaced by metal versions.

**Version 3** is a decorative panel, being entirely anodised after manufacture. It is supplied in kit form with plastic inserts and hinges as standard. These inserts and hinges can be replaced with metal versions.

### Contents of kits

Description	Material/Finish
Hinged panel	Lexan Polycarbonate, UL 94.V0
Two hinges and fixings	Polypropylene, black
Metal hinge kit:	
Two hinge sets and fixings	Mazak, painted black

### Ordering information

#### Description: Horizontally hinged front panel

Height	Width	Type	Hinge	A	Order code
3U	24HP	Version 1	Plastic	121,52	<b>957-236180F</b>
	42HP	Version 1	Plastic	212,96	<b>957-236181D</b>
	60HP	Version 1	Plastic	304,40	<b>957-236182B</b>
	84HP	Version 3	Plastic	426,32	<b>953-236184H</b>
6U	84HP	Version 3	Plastic	426,32	<b>953-236190B</b>

#### Transparent horizontally hinged front panel

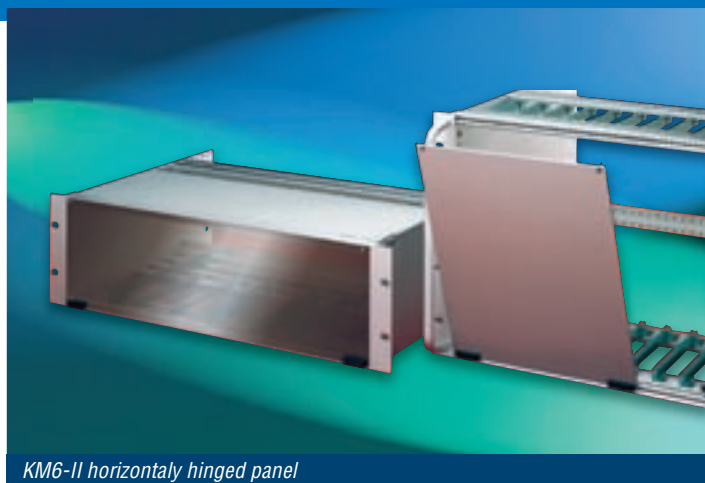
Description: Smoked transparent front panel - horizontal

3U	84 HP	-	Plastic	426,32	<b>953-236516J</b>
----	-------	---	---------	--------	--------------------

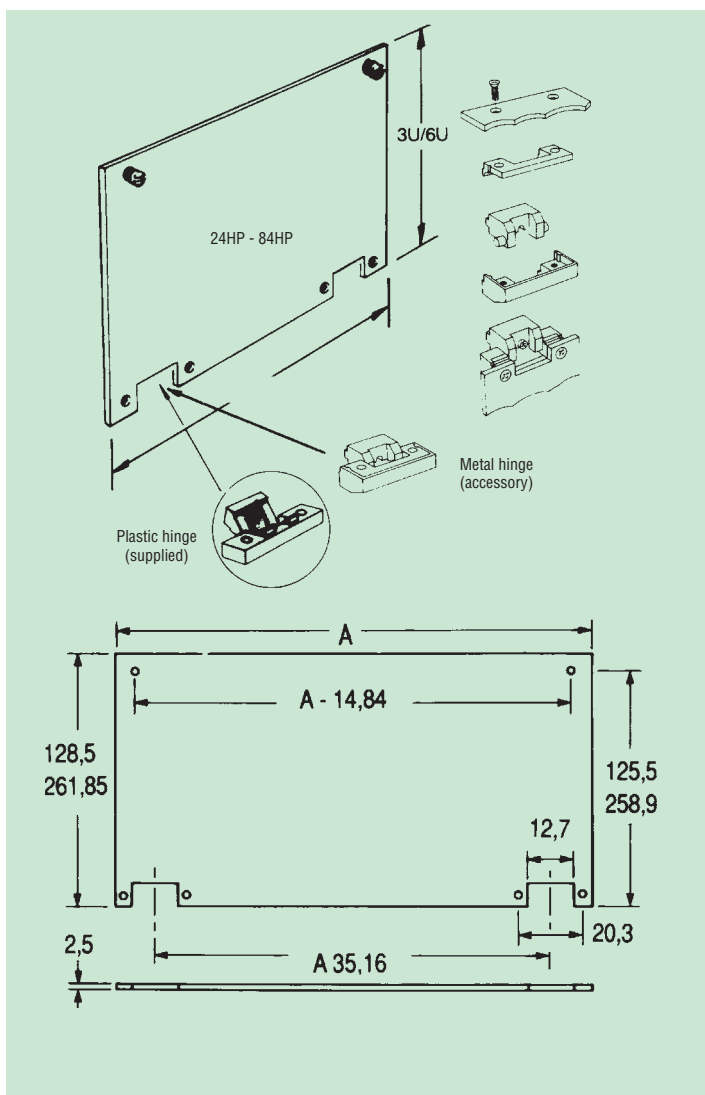
### Hinge kit

Description: Metal hinge kit

Hinge kit	<b>174-26556C</b>
-----------	-------------------



KM6-II horizontally hinged panel



Order separately

Product	Page
Screws, bushes and fixings	75

# KM6-II Subracks: Hinged front panels

## KM6-II VERTICALLY HINGED PANEL

Two hinge types are available: heavy duty metal and a lighter duty, plastic type. They can be hinged right or left as required. Both types are supplied in 3U and 6U, 84HP wide.



Version 3 is a decorative panel, being entirely anodised after manufacture. It is supplied in kit form with plastic inserts as standard which can be replaced with a metal type. These inserts can be replaced with a metal type - please see page 75 for details.

## BULK PACKING

Subject to minimum quantities, we can supply panel kits in bulk, offering savings in packaging and unpacking. Please specify 'BULK PACK' when ordering.

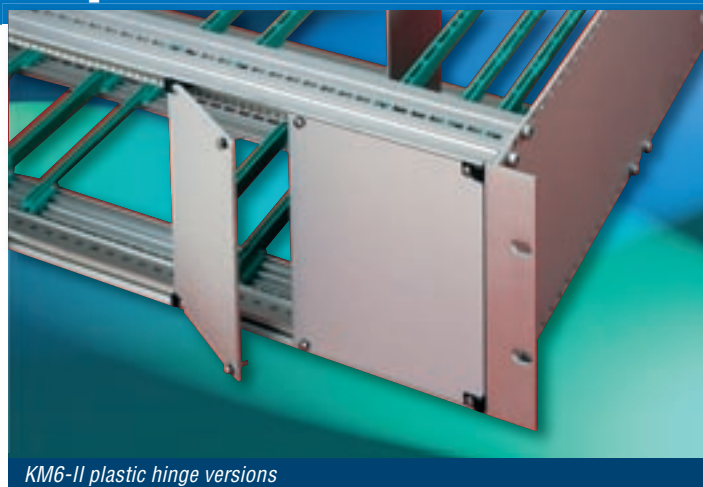
## Contents of kits

Description	Material/Finish
Panel	2,5mm Aluminium, etch and anodised
1 set of hinges	Luranyl 2452/1 black
Metal hinges	Die-cast end bracket, extruded aluminium hinge plate
All fixings	

## Ordering information

Description: Hinged front panel - vertical

Height	Width	Type	Hinge	A	Order code
3U	84HP	Version3	Plastic	426,32	953-236121K
			Heavy duty	416,65	953-236125B
6U	84HP	Version 3	Plastic	426,32	953-236124D
			Heavy duty	416,65	953-236126L

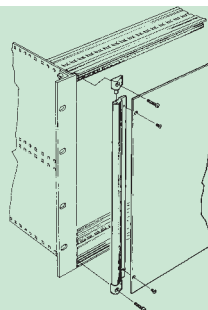


KM6-II plastic hinge versions

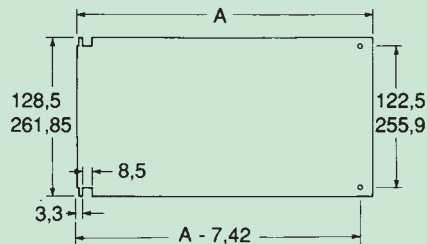


KM6-II metal hinge versions

## Heavy duty version



## Normal version



Order separately

Product	Page
Screws, bushes and fixings	75

# KM6-II Subracks: Front panels

## 25 WAY D-SUB CONNECTOR MOUNTING

This range of panels will fit KM6-II and similar IEC60297-3 subracks. Each panel is supplied with fixing screws, inserts and a sight hole.



### Features

- IEC60297-3 compatible
- Various configurations
- Blanking plate available

**Type 1** also includes a handle and aluminium identification label. The blanking plates can be used to fill unused apertures.

**Version 2** has an anodised front face and a chromated, conductive inner face for grounding purposes. Supplied with metal retaining inserts as standard.

Version 2 panels are prefixed with 953.

*Note: Order singly.*

### BULK PACKING

Subject to minimum quantities, we can supply front panel kits in bulk, offering savings in packaging and unpacking time. Please specify '**BULK PACK**' when ordering.

### Ordering information

Description: D Sub connector mounting

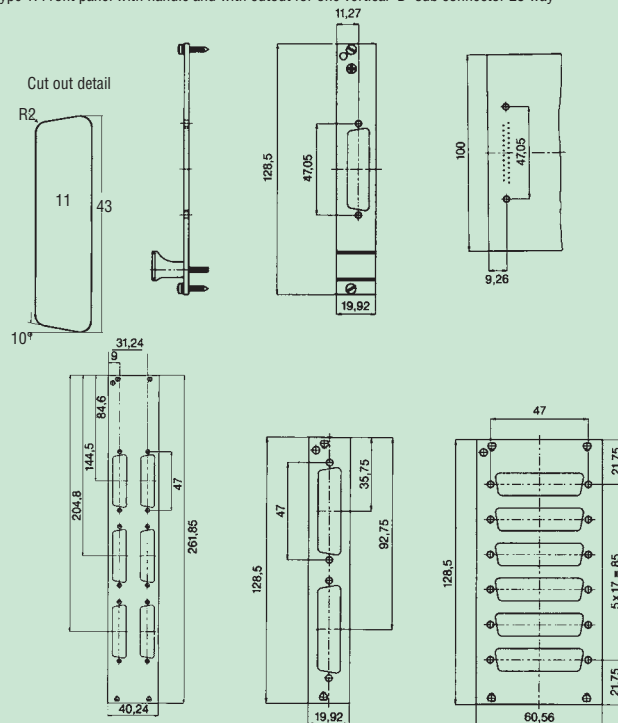
Height	Width	Type	Order code
	4HP	Type 1 front panel	<b>953-236501L</b>
3U	4HP	Type 2 front panel (no handle)	<b>953-236503G</b>
	12HP	Type 2 front panel (no handle)	<b>953-236504E</b>
6U	8HP	Type 2 front panel (no handle)	<b>953-236505C</b>
55mm	13mm	Blanking plate	<b>174-10013H M</b>

**M** = Denotes minimum order quantity, please contact our sales office.



25 Way D-sub connector mounting

Type 1: Front panel with handle and with cutout for one vertical 'D' sub connector 25 way



Type 2: Front panels less handles with multiple cutouts for 25 way 'D' sub connector 25 way

## FRONT PANEL FRAME

Supplied as a kit, either with or without front handles, this 84HP wide frame permits the mounting of 3U, IEC 60297-3 front panels in 19" rack applications. Typically this application appears in networking and machine tool situations where the panels are carrying connectors, keypads or controls only and a full subrack is not necessary.

### Contents of kit

Item/Description	Qty.	Material/Finish
End plate angles	2	2,5mm Aluminium BS 1470 5251-H24 (NS4 H6), conductive clear chromate
Stub end plates	2	2mm Aluminium, alocrom 1000
Plain front extrusions	2	Aluminium alloy BS 1474 6063T6
Tapped strips	2	MS zinc passivate
Fixings		

### Ordering information

Description: Front panel frame

Height	Width	Handles	Order code
3U	84HP	No	<b>950-261554K</b>
		Yes	<b>950-261553A</b>



Front panel frame

# KM6-II Subracks: Front panel accessories

## PCB POLARISING DEVICE MOUNTING BRACKET



This mounting bracket is designed to place the pcb in the normal IEC/DIN position as well as offering a polarising feature.

The device is in two parts (plug and socket), and can be fitted at the top or bottom of the pcb/front panel (or both). This item enables the user to code individual cards within a subrack or caseframe

Note: Before the polarising device prevents final insertion, it is possible to partially engage the connector. It is thus not suitable for discriminating on powered up systems.

### Contents of kits

Description	Qty.	Material/Finish
Top socket	1	2 plugs, Nylon 66 black
Bottom socket	1	4 polarising plugs, Nylon 66 black

### Ordering information

Description	Order code
Polarising mounting bracket	173-24169H

## SLIMLINE EXTRUDED HANDLES

When suitably drilled, blank front panels can be fitted with this extruded handle, which is clear anodised. Alternatively, it can be used to replace the moulded plastic handle normally supplied with most of our front panel kits. Offering solvent resistance if needed, the extruded handle can also be used to free up component space.

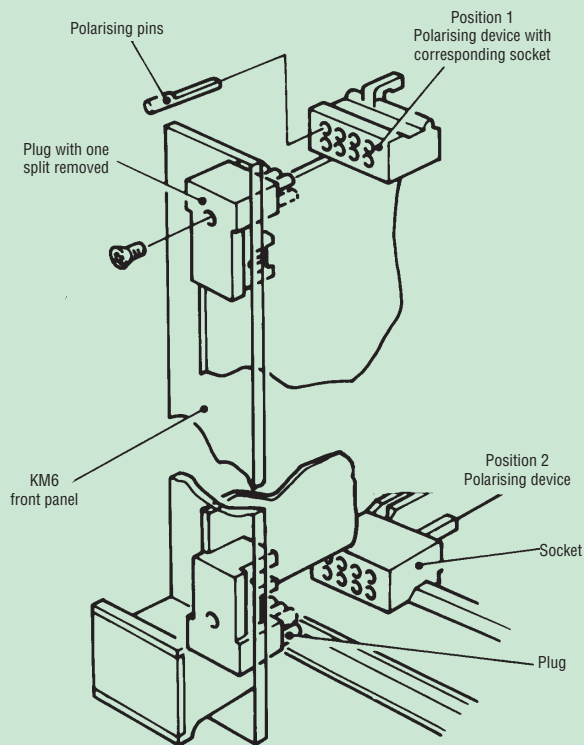
Supplied in packs of 10 with unique fixings.

### Ordering information

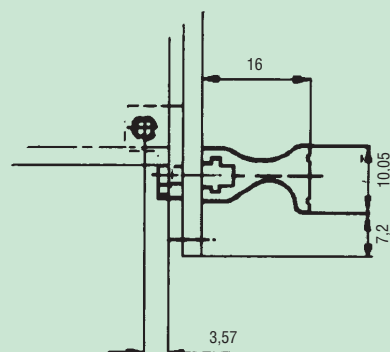
Description: Slimline extruded handles

Panel width	Qty.	Order code
3HP	10	953-250838E
4HP	10	953-250839C
5HP	10	953-250840G
6HP	10	953-250841E
8HP	10	953-250842C
10HP	10	953-250843A
12HP	10	953-250844K

## PCB Polarising device



## Slimline extruded handle



## KM6-II Subracks: 3U and 6U plug-in units – 2 rail

### KM6-II 2 RAIL PLUG-IN UNITS FOR 111,8MM HEIGHT GUIDES



Compatible with all KM6-II, KM6-EC, VEcase 700 and Diplomat subracks and enclosures.

#### Features

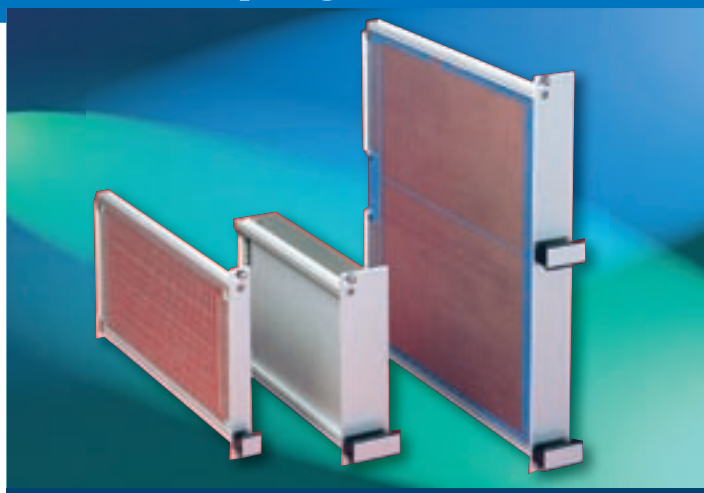
- Maximum volume
- Alternative PCB positions
- PCB and connector easily removed, no disassembly required
- 3HP to 9HP, 160mm or 220mm deep
- Standard front panel with horizontal grain and plastic insert
- Aluminium identification labels
- Easy and fast assembly
- Supplied packed flat
- No adjustment required

#### Contents of kits

Description	Qty	Material/Finish
Front panel	1	2,5mm aluminium, BS 1470NS4 1/2H etch and clear anodise
Identification labels	3U x 1 6U x 2	1,5mm aluminium alloy BS 1470 NS4 1/2H
Handle	3U x 1 6U x 2	Luranyl 2452/1
Guide rails	2	Aluminium alloy BS 1474 HE9 TF etch and clear anodise,
Connector/PCB mounting brackets	2	Mazak 3
All fixings		

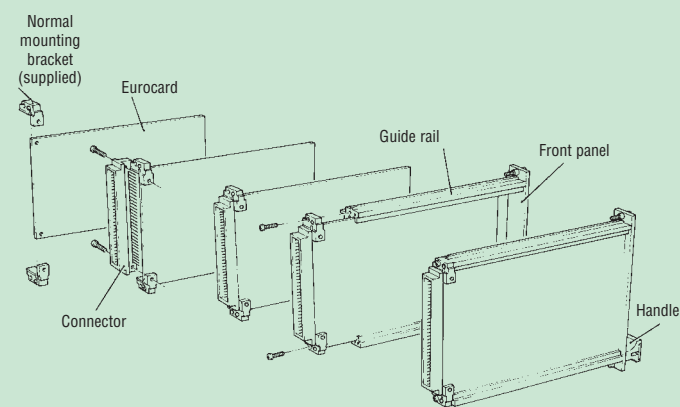
#### Ordering information

Height	Width	Order code	
		160mm deep	220mm deep
3U	3HP	957-236290K	957-236307H
	4HP	957-236294B	957-236308F
	5HP	957-236297G	957-236309D
	6HP	957-236298E	957-236310H
	7HP	957-236304C	957-236311F
	8HP	957-236305A	957-236312D
	9HP	957-236306K	957-236313B
	4HP	957-236315J	957-236321C
	5HP	957-236316G	957-236322A
6U	6HP	957-236317E	957-236339F
	7HP	957-236318C	957-236340K
	8HP	957-236319A	957-236341H



KM6-II 2 rail, 111,8mm plug-in units

#### KM6-II - 2 Rail plug-in units assembly



160mm modules fit to two piu guides **950-232664E**  
 220mm modules fit to two piu guides **950-232665C**  
 Guides are supplied in Pks of 10.

#### Order separately

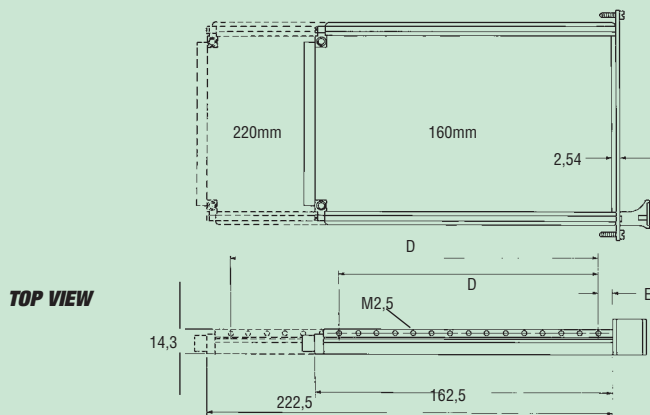
Product	Page
Guides	32
Left hand and right hand screens	66
Top and bottom screens	66
Alternative connector mounting brackets	65
Screws, bushes and fixings	75

# KM6-II Subracks: 3U and 6U plug-in units – 2 rail

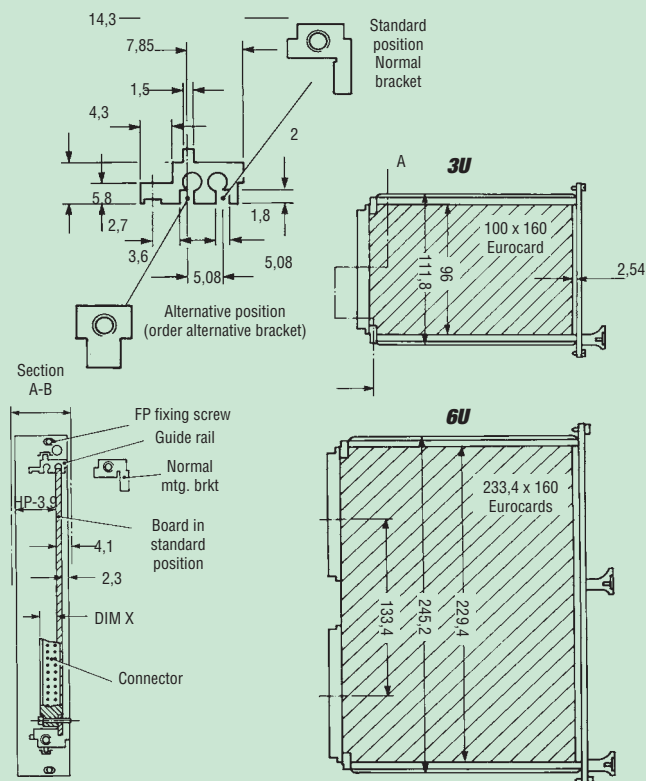
## Dimensional details

Depth	Dim D	Dim E
160	142,24	7,6
220	203,2	7,15

Connector type	B	C	D	E	F	G	H
DIM X	7,6	9,4	9,4	14,4	11,3	16,3	11,3



## GUIDE RAIL EXTRUSION



## ALTERNATIVE MOUNTING BRACKETS FOR CONNECTORS

When the alternative card position is employed (without screening) alternative mounting brackets for the connectors should be ordered. Normal mounting brackets are supplied with all 2 and 4 rail plug-in units. Additional normal mounting brackets are available in packs of 10.

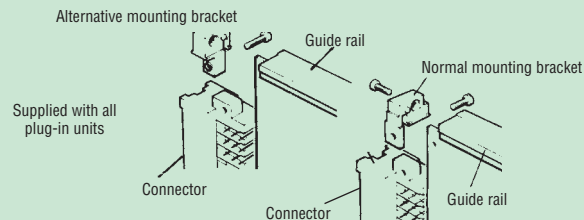
## Contents of kits

Description	Qty.	Material/Finish
Mounting brackets	10	Mazak 3
Fixings		

## Ordering information

Description	Qty.	Order code
Normal mounting brackets	10	174-13019E
Alternative mounting brackets	10	174-13020F

## Alternative mounting brackets for connectors



# KM6-II Subracks: 3U and 6U plug-in units – 4 rail

## KM6-II 4 RAIL PLUG-IN UNIT FOR 111,8MM HEIGHT GUIDES

### Features

- Maximum volume
- Alternative PCB mounting positions
- PCB and connector easily removed, no disassembly required
- 10 HP to 42 HP, 160mm or 220mm deep
- Standard front panel with horizontal grain and plastic insert
- Aluminium identification labels
- Break-off tags for alternative connector position
- Easy and fast assembly
- Supplied packed flat
- Compatible with all KM6-II, KM6-EC, VCase 700 and Diplomat subracks and enclosures

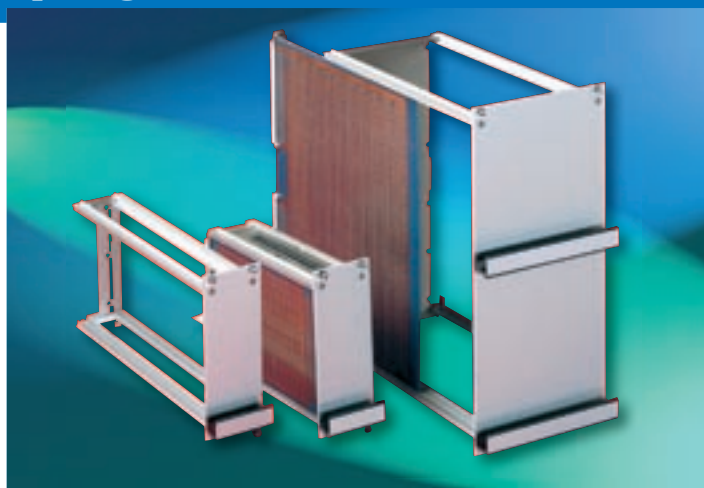
### Contents of kits

Description	Qty.	Material/Finish
Front panel	1	2,5mm aluminium BS 1470NS4 1/2H etch and clear anodise
Handle and identification strips	3U x 1 6U x 2	Luranylco 2452/1, black, 1,5mm aluminium alloy BS 1470 NS4 1/2H
Guide rails	4	Aluminium alloy BS 1474HE9 TF etch and clear anodise
Connector/pcb mounting brackets	2	Mazak 3
Rear panel		1,5mm Aluminium alloy BS 1470 NS4 1/2H
All fixings		

Note: order separately; screens, side plates and base plates

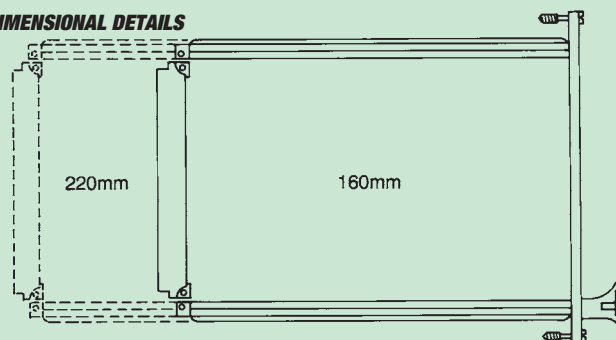
### Ordering information

Height	Width	Order code	Order code
		160mm deep	220mm deep
3U	10HP	957-236386H	957-236399K
	12HP	957-236387F	957-236400G
	14HP	957-236388D	957-236401E
	21HP	957-236389B	957-236402C
	24HP	957-236390F	957-236403A
	42HP	957-236391D	957-236404K
6U	10HP	957-236393L	957-236405H
	12HP	957-236394J	957-236406F
	14HP	957-236395G	957-236407D
	24HP	957-236397C	957-236409L
	42HP	957-236398A	957-236410D

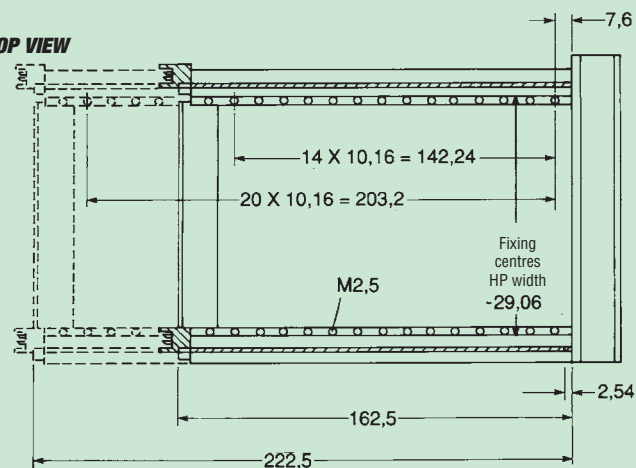


KM6-II 4 rail plug-in units

### DIMENSIONAL DETAILS



### TOP VIEW



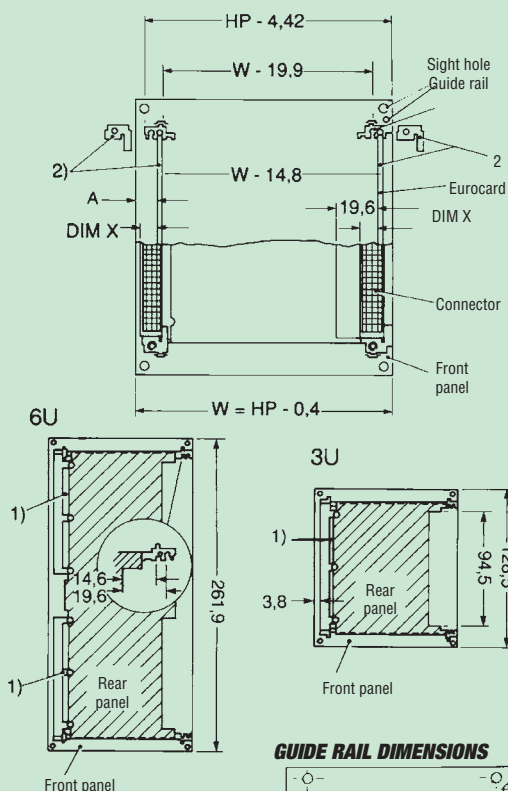
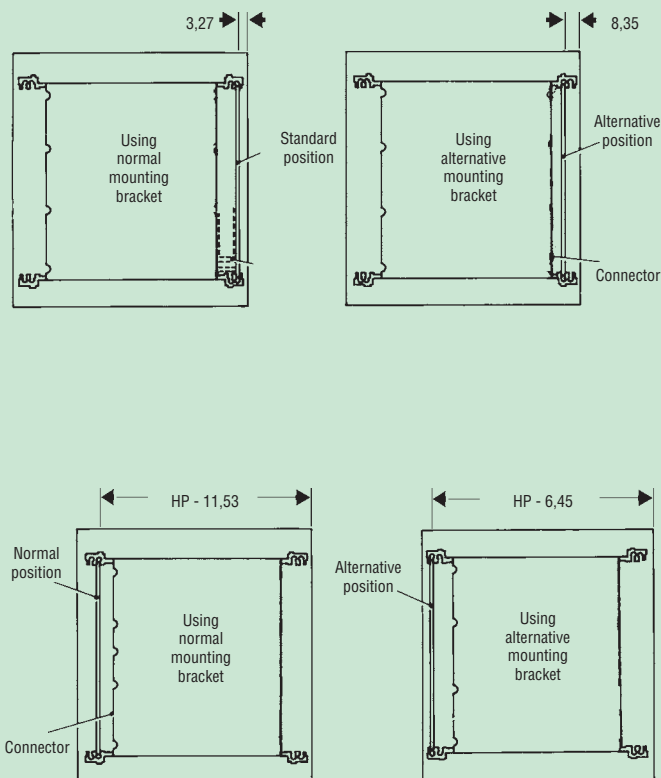
160mm modules fit to four piu guides 950-232664E (KM6-II)  
220mm modules fit to four piu guides 950-232665C (KM6-II)  
Guides are supplied in Pks of 10.

### Order separately

Product	Page
Guides	32
Left hand and right hand screens	66
Top and bottom screens	66
Alternative connector mounting brackets	65
Screws, bushes and fixings	75

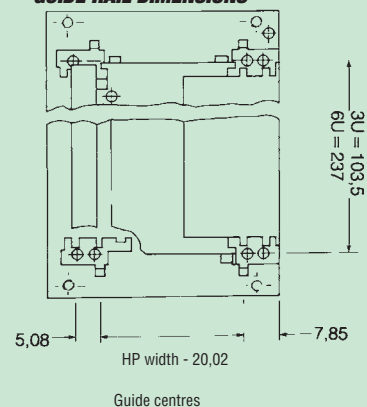
# KM6-II Subracks: 3U and 6U plug-in units – 4 rail

## CIRCUIT BOARD MOUNTING OPTIONS (VIEWED FROM REAR)



- 1) Break off these tags when fitting connector on this side
- 2) Normal mounting bracket for normal card position. Order separately, alternative bracket, to move Eurocard 5,08mm to the right

### GUIDE RAIL DIMENSIONS



Connector type	B	C	D	E	F	G	H
DIM 'x'	7,6	9,4	9,4	14,4	11,3	16,3	11,3

## ALTERNATIVE MOUNTING BRACKETS FOR CONNECTORS

When the alternative card position is employed (without screening), alternative mounting brackets for the connectors should be ordered. Normal mounting brackets are supplied with all 2 and 4 rail plug-in units.

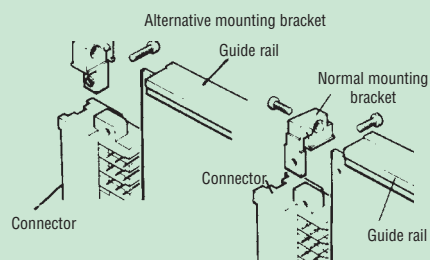
### Contents of kits

Description	Qty.	Material/Finish
Mounting brackets	10	Mazak 3
Fixings		

### Ordering information

Description	Order code
Alternative mounting bracket	174-13020F

## Alternative mounting brackets for connectors



Supplied with all plug-in units



# KM6-II Subracks: Plug-in units - screens

## LEFT HAND SIDE SCREENS

These screens slot into the plug-in unit guide rail. The PCB is moved over to the next slot position, with an alternative connector/PCB mounting bracket utilised. These mounting brackets are supplied with each left hand screen kit.

## NORMAL RIGHT HAND SIDE SCREENS - 2 RAIL VERSION

These wrap around screens bolt to the guide rails and give full protection to the PCB mounted components.

## NORMAL RIGHT HAND SIDE SCREENS - 4 RAIL VERSIONS

These screens slot in the right hand guide rails and enclose the full area on the right hand side within the unit.

## ALTERNATIVE RIGHT HAND SIDE SCREENS - 2 RAIL

Similar to the standard but narrower to take into account the room necessary to plug the unit immediately to the left of a divider kit in a 6U subrack.

## ALTERNATIVE RIGHT HAND SIDE SCREENS - 4 RAIL

These are used instead of the standard screen when the unit is to be fitted immediately to the left of a divider kit in a 6U subrack.

## TOP AND BOTTOM SCREENS - 4 RAIL

Top and bottom screens give protection over the full length of the plug-in unit and are pierced for ventilation. Fixing is by four and six screws directly into pre-tapped holes in the guide rails.

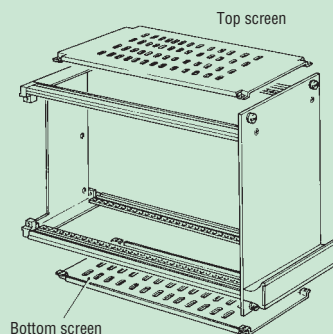
### Contents of kits

Description	Material/Finish
1 top, 1 bottom;	0,5mm PVC clad pre-coated steel
All fixings	

### Ordering information

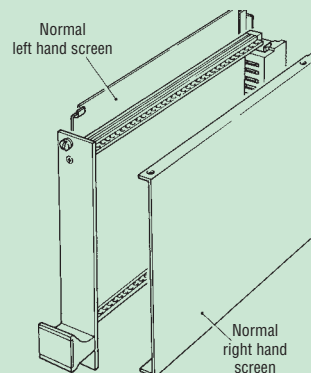
Description: Plug-in unit screens

Height	Width	Depth	Type	Order code	
3U	Any	160mm	2 rail left hand	174-13021C	
		220mm	2 rail left hand	174-12645C	
	4HP	160mm	2 rail std right hand	174-13023H	
		220mm	2 rail std right hand	174-12647H	
	5HP	160mm	2 rail std right hand	174-13024E	
		160mm	2 rail alternative right hand	174-13023H	
	6HP	220mm	2 rail alternative right hand	174-12647H	
		160mm	2 rail std right hand	174-13025B	
	7HP	220mm	2 rail std right hand	174-12648E	
		160mm	2 rail alternative right hand	174-13024E	
	8HP	160mm	2 rail alternative right hand	174-13025B	
		220mm	2 rail alternative right hand	174-12648E	
9HP	160mm	2 rail alternative right hand	174-13027G		
	220mm	2 rail alternative right hand	174-12648E		
3U/6U	24HP	160mm	top and bottom screens	174-12969A	
		160mm	4 rail left hand	174-13021C	
3U	Any	220mm	4 rail left hand	174-12645C	
		160mm	4 rail std right hand	174-13035J	
	10HP	220mm	4 rail std right hand	174-12649B	
		160mm	4 rail alternative right hand	174-13021C	
	12HP	220mm	4 rail alternative right hand	174-12645C	
		160mm	4 rail top and bottom screens	174-12965B	
	14HP	220mm	4 rail top and bottom screens	174-12639F	
		160mm	4 rail top and bottom screens	174-12966K	
	3U/6U	21HP	160mm	top and bottom screens	174-12967G
			220mm	top and bottom screens	174-12968D
	6U	10-24HP	160mm	4 rail top and bottom screens	174-12640G
			160mm	4 rail left hand	174-13022L
160mm			4 rail standard right hand	174-13036F	
		160mm	4 rail alternative right hand	174-13022L	

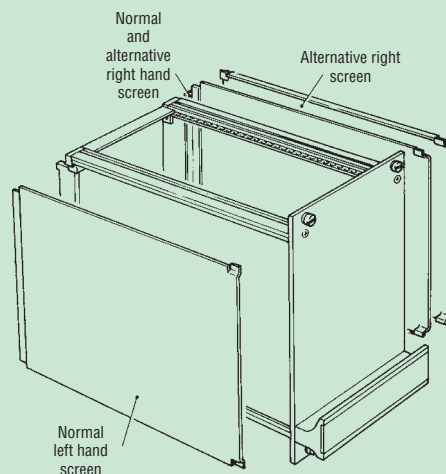


Top and bottom screens

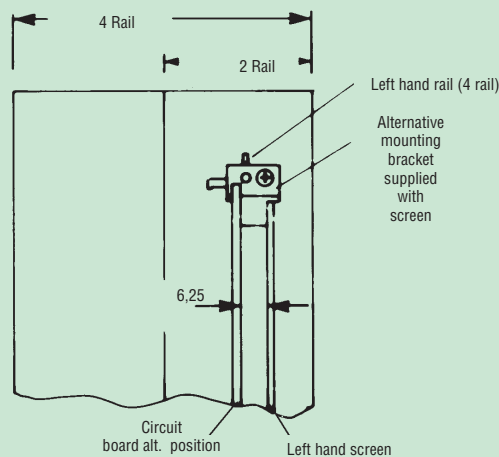
### 2 RAIL UNIT



### 4 RAIL UNIT



Left and right hand screens



Standard right hand screens (viewed from the rear)

# KM6-II Subracks: 3U plug-in units – 2 rail

## 160MM AND 220MM DEPTH

Supplied in kit form, the KM6-II extruded plug-in unit offers strength and simple assembly.



### Features

- Plug-in units with normal or high level screening
- 3U x 160mm or 3U x 220mm, various widths
- Electrical continuity between all components
- KM6-II modules with mechanical strength for heavy components
- Good thermal properties and electromagnetic shielding between neighbouring system components
- Front panels with anodised front face, chromated rear face
- Compatible with DIN 41494 / IEC 60297-3

Construction is based on a conductive extruded side plate offering new facilities. Right hand covers, with a rear cut-out for DIN 41612 connectors, slot into angled grooves in the extrusion and are retained positively at the rear of the module. On high screening level versions, additional fixings are provided at the front and rear to maintain limited slot lengths. Metal inserts are provided for electrical continuity when fitting to the subrack. Features are provided in the extrusion for two x 160mm tapped strips offering facilities for mounting components. Single Eurocard/connector assemblies can be attached with separate metal mounting brackets.

These modules mount to two PCB guides: 950-232662J (PK.10) for the 160mm deep module or 950-232663G (PK.10) for the 220mm deep version.

### Contents of kit

Description	Qty.	Material/Finish
Front panel	1	2,5mm Aluminium alloy, clear anodised front face, chromated rear, horizontal grain
Side extrusion	1	Aluminium alloy, unfinished
Right side cover	1	1mm galvanised steel
Handle	1	Luranyl 2452/1, black
Ident label	1	1,5mm aluminium, anodised
Fixings		
Assembly instructions		

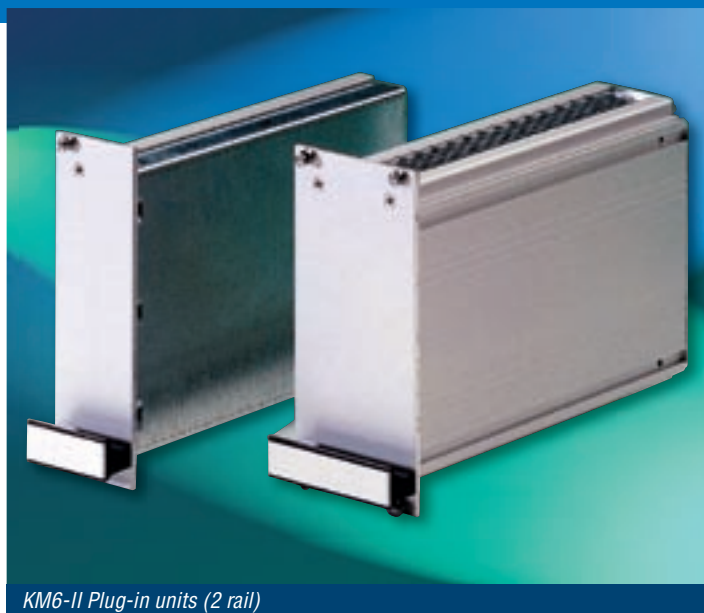
The normal version has plastic inserts, the higher level version metal inserts.

### Ordering information

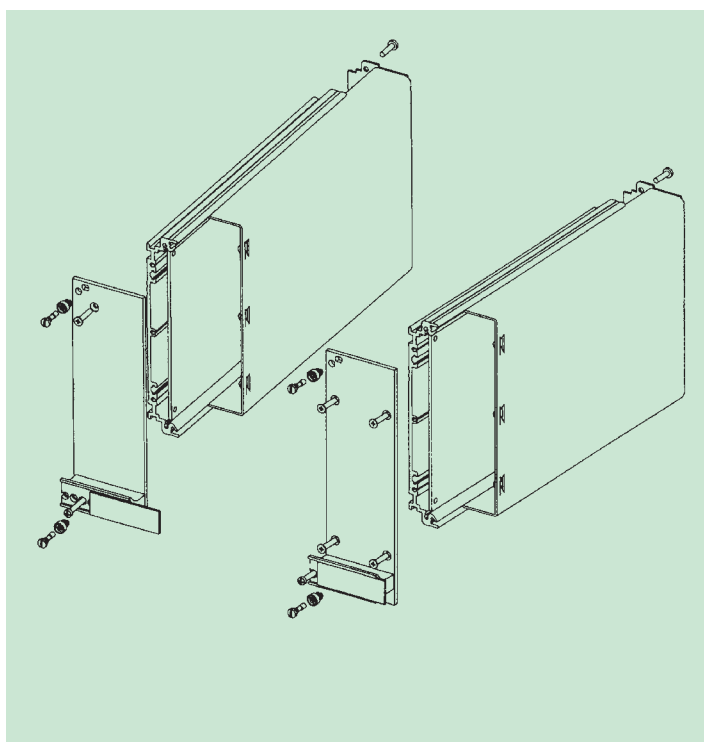
Description: 2 Rail module - 160mm deep version				Order codes	
Height	Width	Front panel	PCB component	Normal	High level
	HP	width mm	height max.	version	screening
3U	6	30,08	12,6mm	<b>951-263113L</b>	<b>951-263117C</b>
	7	35,16	17,7mm	<b>951-263114J</b>	<b>951-263118A</b>
	8	40,24	22,8mm	<b>951-263115G</b>	<b>951-263119K</b>
	10	50,40	32,9mm	<b>951-263116E</b>	<b>951-263120C</b>
Description: 2 Rail module - 220mm deep version					
3U	6	30,08	12,6mm	<b>951-263903D</b>	<b>951-263906J</b>
	8	40,24	22,8mm	<b>951-263904B</b>	<b>951-263907G</b>
	10	50,40	32,9mm	<b>951-263905L</b>	<b>951-263908E</b>

### Order separately

Metal front panel bush	pk 100	<b>953-236506A</b>
PCB/connector mounting brackets	pk 5 pr.	<b>951-263755D</b>
Tapped strip M2,5 x 160mm	pk 10	<b>951-263756B</b>
Tapped strip M2,5, 42HP wide	1	<b>950-202739G</b>



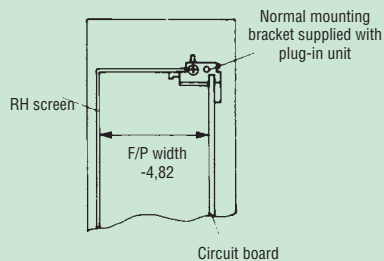
KM6-II Plug-in units (2 rail)



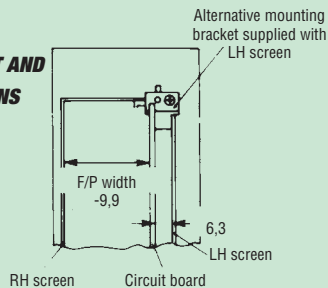
# KM6-II Subracks: Plug-in units - screens

## 6U - COMPATIBLE SCREENS

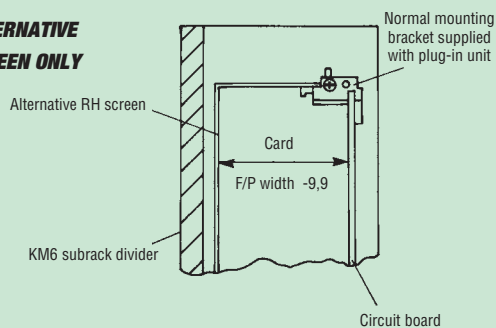
### 2 RAIL WITH RIGHT HAND SCREEN ONLY



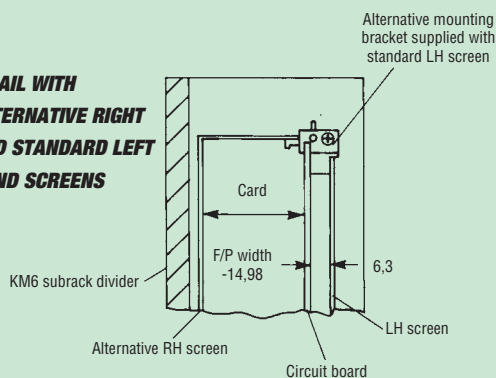
### 2 RAIL WITH RIGHT AND LEFT HAND SCREENS



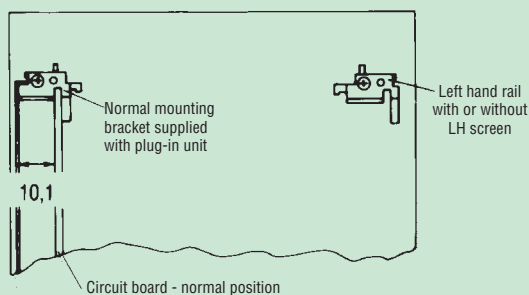
### 2 RAIL WITH ALTERNATIVE RIGHT HAND SCREEN ONLY



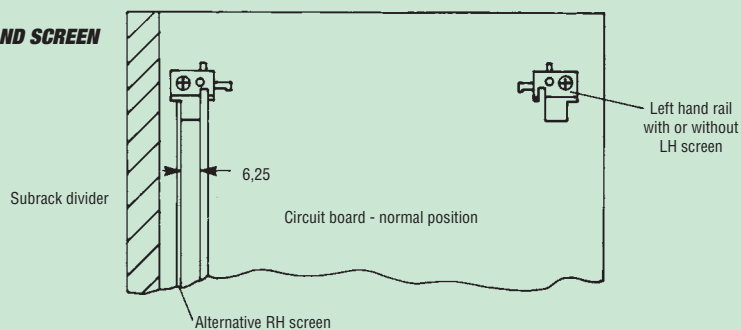
### 2 RAIL WITH ALTERNATIVE RIGHT AND STANDARD LEFT HAND SCREENS



### 4 RAIL WITH RIGHT HAND SCREEN



### 4 RAIL WITH ALTERNATIVE RIGHT HAND SCREEN



Note: On 4 rail units, when fitting any right hand screen, the circuit board can only be the normal position

# KM6-II Subracks: 3U plug-in units – 4 rail

## 160MM AND 220MM DEPTH

Supplied in kit form, the KM6-II extruded plug-in unit offers strength and simple assembly.



### Features

- Plug-in units with normal or high level screening
- 3U x 160mm or 3U x 220mm, various widths
- Electrical continuity between all components
- KM6-II modules with mechanical strength for heavy components
- Good thermal properties and electromagnetic shielding between neighbouring system components
- Front panels with anodised front face, chromated rear face
- Compatible with DIN 41494 / IEC 60297-3

Construction is based on two conductive extruded side plates offering new facilities. Ventilated top and bottom covers slide into angled grooves in the extrusions. Rear covers, with a cut-out for DIN 41612 connectors, screw to the side extrusions.

On high screening level versions, additional fixings are provided at the front and rear to maintain limited slot lengths. Metal inserts are provided for electrical continuity when fitting to the subrack.

Features are provided in the extrusion for two x 160mm tapped strips offering facilities for mounting components. Single Eurocard/connector assemblies can be attached with separate metal mounting brackets.

These modules mount to four PCB guides: 950-232662J (PK.10) for the 160mm deep module or 950-232663G (PK.10) for the 220mm deep version.

### Contents of kit

Description	Qty.	Material/Finish
Front panel	1	2,5mm Aluminium alloy, clear anodised front face, chromated rear, horizontal grain
Side extrusion	1	Aluminium alloy, unfinished
Top, side and rear covers	1	1mm galvanised steel
Handle	1	Luranyl 2452/1, black
Ident label	1	1,5mm aluminium, anodised
Fixings		
Assembly instructions		

The normal version has plastic inserts, the higher level version metal inserts.

### Ordering information

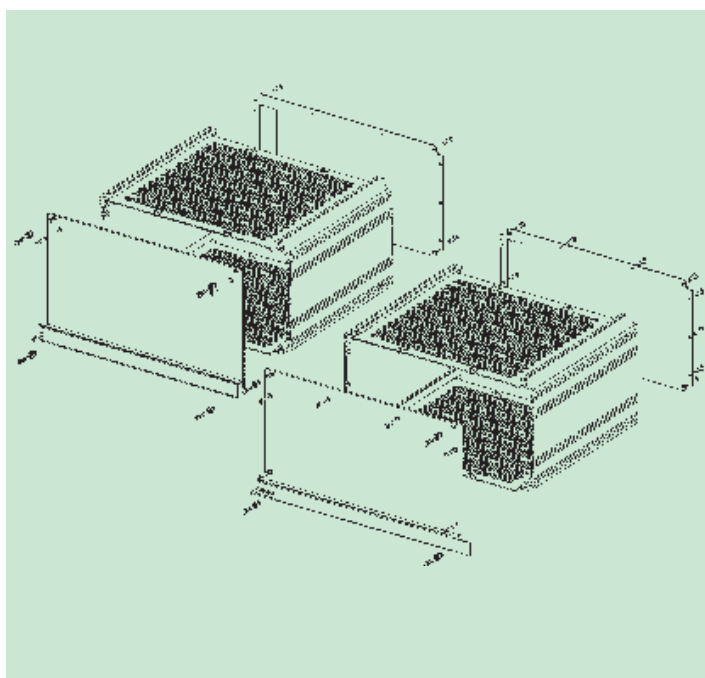
Description: 4 Rail module - 160mm deep version				Order codes	
Height	Width	Front panel	PCB component	Normal	High level
	HP	width mm	height max.	version	screening
3U	12	60,56	39,2mm	951-263121A	951-263126B
	14	70,72	49,3mm	951-263122K	951-263127L
	21	106,28	84,9mm	951-263123H	951-263128J
	24	121,52	100,1mm	951-263124F	951-263129G
	42	212,96	191,6mm	951-263125D	951-263130L
Description: 4 Rail module - 220mm deep version					
3U	12	60,56	39,2mm	951-263909C	951-263913A
	14	70,72	49,3mm	951-263910G	951-263914K
	21	106,28	84,9mm	951-263911E	951-263915H
	24	121,52	100,1mm	951-263912C	951-263916F

### Order separately

Metal front panel bush	pk 100	953-236506A
PCB/connector mounting brackets	pk 5 pr.	951-263755D
Tapped strip M2,5 x 160mm	pk 10	951-263756B
Tapped strip M2,5, 42HP wide	1	950-202739G



KM6-II Plug-in units (4 rail)



# KM6-II Subracks: 3U RFI screened plug-in units

## KM6 - RFI SCREENED PLUG-IN UNITS

The rear panel of this module is supplied blank to provide maximum versatility in the selection of suitable connectors.



### Features

- Excellent emc performance at plug-in unit level
- Housing for Eurocards or other components
- Ideal for screening sensitive or high noise circuits
- Conductively finished with interface seals for all-round screening
- Metal retaining inserts for electrical continuity to subrack
- Accessibility to pcb without total disassembly
- Design philosophy makes custom sizes possible

It should be noted that this module cannot be fitted into the slot immediately to the left of a KM6-II divider plate.

### Contents of kit

#### 2 RAIL – 3U

Description	Qty.	Material/Finish
Front panel	1	2,5mm aluminium BS 1470 NS4 1/2H Alocrom 1000 vertical grain
Handle	1	1,5mm Al alloy etched anodised
Identification label	1	Black Luranyla 2452/1
Guide rails	2	Aluminium Alloy BS 1474 HE9TF Alocrom 1200
Flat side screen	1	1,2mm aluminium BS 1470 NS 41/2 Alocrom 1200
Wrap round screen	1	1,2mm aluminium BS 1470 NS 41/2 Alocrom 1200
Rear panel	1	1,6mm Zintec MS Zinc plate and passivate
Round and 'U' seals		
Board location		
Fixings		

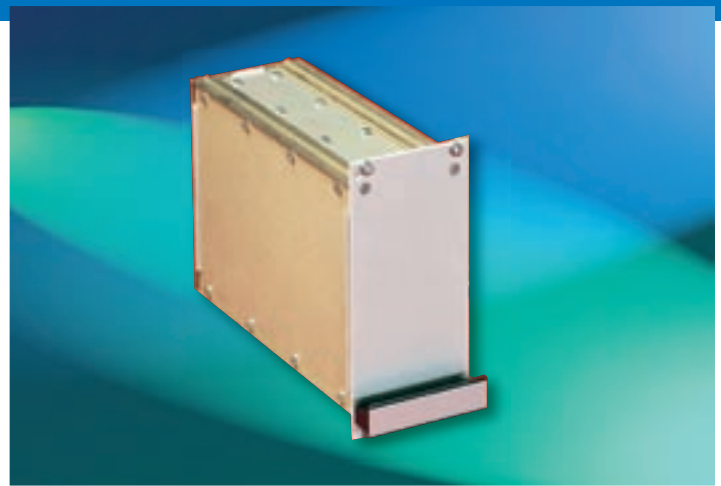
#### 4 RAIL – 3U

Description	Qty.	Material/finish
Front panel	1	2,5mm aluminium BS 1470 NS4 1/2H Alocrom 1000 vertical grain
Handle	1	1,5mm Al alloy etched anodised
Identification label	1	Black Luranyla 2452/1
Guide rails	4	Aluminium Alloy BS 1474 HE9TF Alocrom 1200
Side screens	2	1,2mm aluminium BS 1470 NS 41/2 Alocrom 1200
Top/bottom screens	2	1,2mm aluminium BS 1470 NS 41/2 Alocrom 1200
Rear panel	1	1,6mm Zintec MS Zinc plate and passivate
Round and 'U' seals		
Board location		
Fixings		

Note: front panels have vertical grain, metal insert and conductive finish.

### Ordering information

Height	Width	Depth	Type	Order code
3U	6HP	160	2 Rail	951-203797B
	12HP	160	4 Rail	951-203799J
Sealing strip 'U' section		1 metre	–	174-43905K

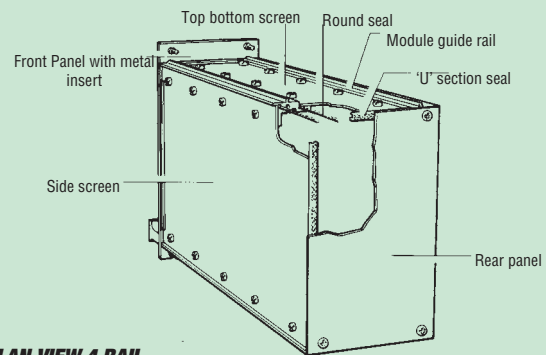


KM6-RFI screened plug-in units

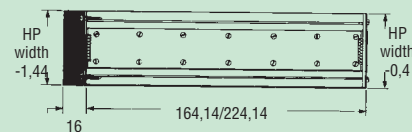
### TYPICAL TEST RESULTS

	Frequency MHz	Level dB (worst case)
'H' Field	1.0	28
	10.0	45
	00.1	>41
'E' Field	0.1	>63
	1.1	>66
	10.0	>87
	100.0	82
	1000.0	82

Note: At the lower end of the frequency scale, difficulty was experienced in obtaining a sufficient field strength using a small dipole arrangement.



### PLAN VIEW 4 RAIL



### Order separately

Product	Page
Slimline extruded handles	61

# KM6-II Subracks: 3U Fan plug-in units

## FAN PLUG-IN UNIT

These modules draw air in through the front panel and blow to the left. They can thus be used to cool horizontally mounted PCBs or 'hot' units such as PSU modules.



### Features

- 3U high
- 10HP wide
- 160mm deep
- Filtered

The module is filtered and supplied either wired, with 230V fan (28-202481B) or less fan and wiring.

Output is 14,4 cfm less filter, 10,1 cfm with filter. The filter can be removed from behind the front panel and is retained in position with a screw. The connector (which is included in both versions) is type H15. Wiring, where applicable, is to Z24(N) and Z28(L) with earth to Z32.

### Contents of kit

Description	Qty.	Material/Finish
Front panel	1	Etched and clear anodised, vertical grain
Handle	1	Luranyl 2452/1 black
Ident label	1	Metal 1,5mm Aluminium
Fan mounting plate	1	1,6mm zintec steel, zinc and clear passivate
Cover and filter plate		0,9mm zintec steel, zinc and clear passivate
Filter		Demembrated polyurethane foam

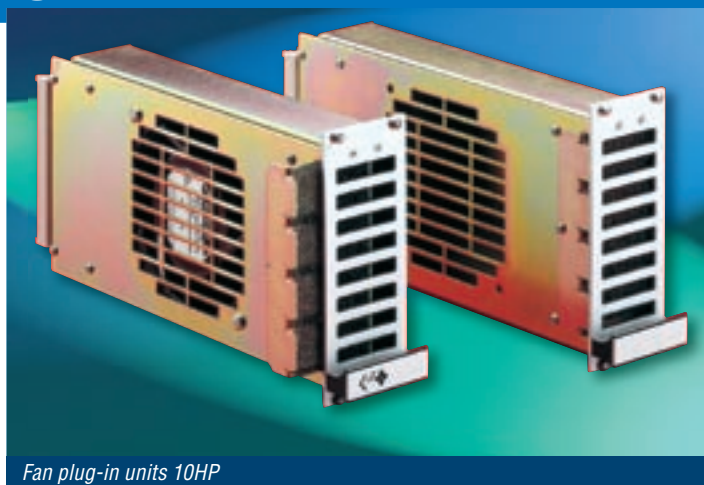
### Ordering information

Description: Fan plug-in unit

Height	Width	Depth	Fan	Order code
3U	10HP	160mm	with fan	<b>173-202514C</b>
			without fan	<b>173-202956D</b>

*Note: front panels are vertical grain, metal insert and anodised*

Use two plug-in unit guides **950-232664E** (sold in packs of ten, see page 32).



Fan plug-in units 10HP

# KM6-II Subracks: Sealed disc drive modules

## KM6-II - SEALED DISC DRIVE MODULES



### Features

- Conforms to IEC 60297-3
- Two versions for 3½" disc drives
- 3U in height
- 24 HP and 14 HP
- Front area sealed to IP54
- Hinged transparent front panels
- Universal mounting facilities
- Compatible with all KM6-II subracks, VCase 700, KM6-II Diplomat caseframes and KM6-EC

### Application

These unique disc drive housings provide sealing to IP54 on the front aperture, thus overcoming a common problem with IEC 60297 Plug-in modules. They are ideal for harsher environments such as factories and laboratories, where dust and moisture attack is likely.

### VERSION 2: 3U x 24 HP

Suitable for two 3½" drives such as: Teac mini FD35 FW, NEC FD 1035, NEC D 3126 or Lupine Titan 20.

### VERSION 3: 3U x 14 HP

Suitable for one 2 x 3½" drive 25,4mm (1") high.

### Construction

The modules consist of a front bezel with a bezel mounting plate, to which are attached two side plates. The side plates incorporate universal mounting positions for different types of disc drive. Also attached to the bezel is a hinged transparent front panel which is held in the vertical plane by a plastic catch or by the two captive screws supplied.

Fitted to the bezel is a neoprene seal which gives the IP54 protection.

Blanking panels are available for unused areas in RAL 9032 (Grey). Mounting kits for these should be ordered separately.

All kits should be ordered singly.

### Contents of kits

Description	Qty.	Material/Finish
Side mounting plates	2	1,5mm aluminium etch and anodise
Bezel mounting plate and bezel	1	Aluminium extrusion etch and anodise
Hinged transparent front panel	1	Polycarbonate extrusion UL94V1 smoke grey
Lock plate	1	Aluminium extrusion etch and anodise
Seal	1	Neoprene
All necessary fixings		

### Ordering information

Description: Sealed disc drive modules for 3½" drives

Height	Width	Type	Order code
3U	24HP	Version 2	<b>174-10006C</b>
	14HP	Version 3	<b>174-34978G</b>

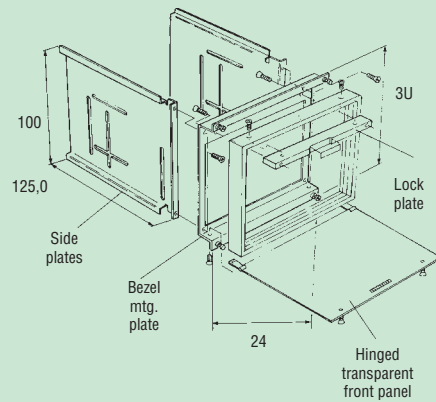
### Order separately

Description	Length	Qty.	Order code
PCB Guides	160mm	10	<b>950-232622J</b>
(four per module reqd.)	220mm	10	<b>950-232663C</b>

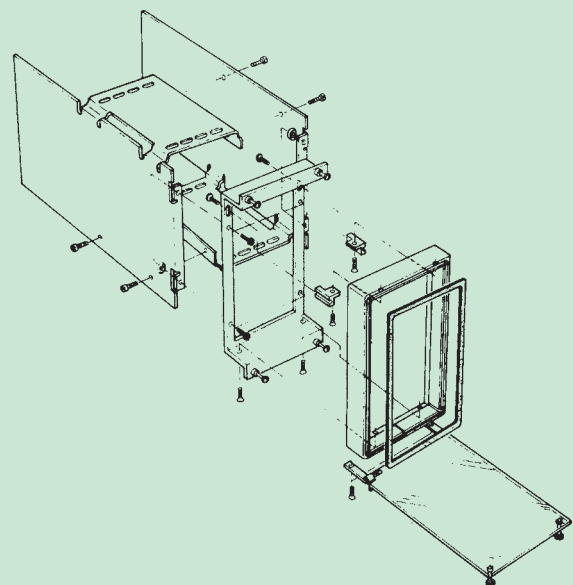


Standard disc drive modules

### 3½ Version 2

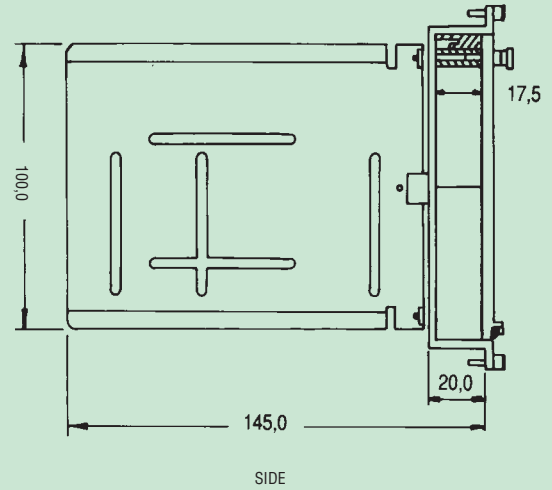
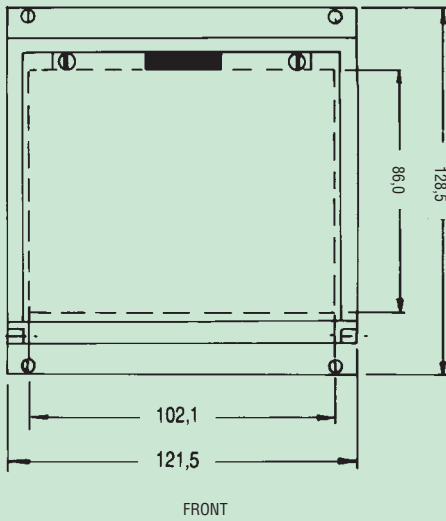


### 3½ Version 3

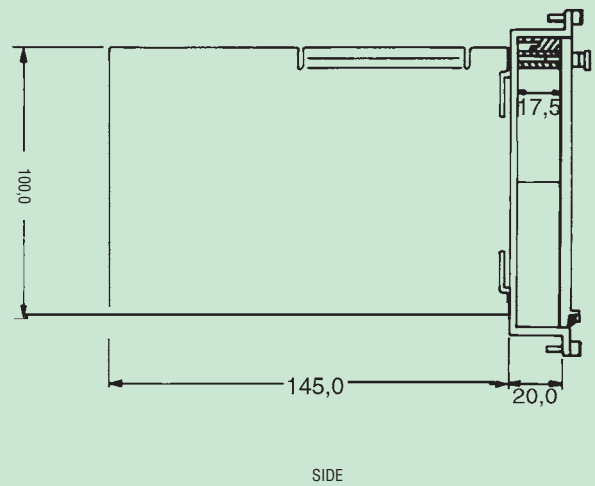
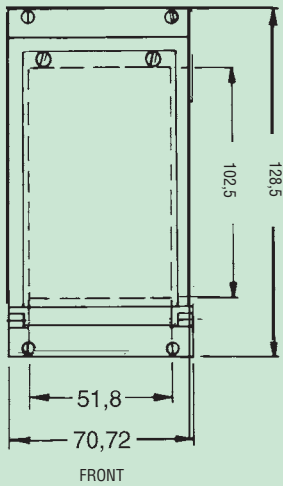


# KM6-II Subracks: Sealed disc drive modules

## 3½ Version 2



## 3½ Version 3



### GUIDES

Fit to PCB **950-232662J**, 160mm  
**950-232663G**, 220mm

Supplied in Pks 10



# KM6-II Subracks: Plug-in disc drive modules

## KM6-II - PLUG-IN DISC DRIVE MODULES

A series of modules capable of housing various drives and tape streamers.



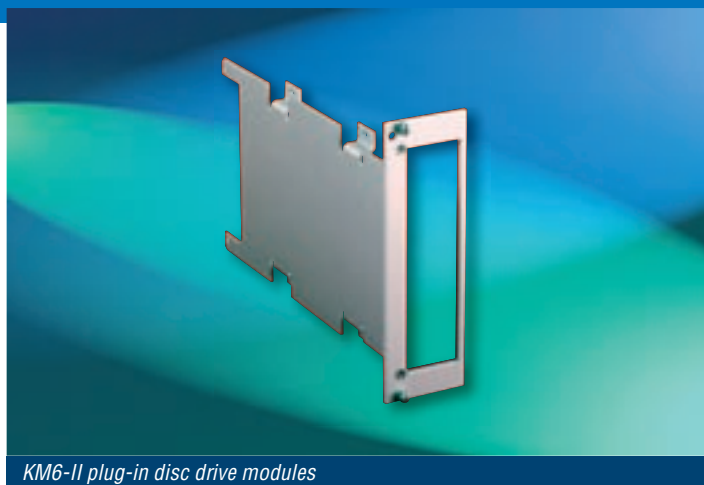
### Features

- 3U high
- Suitable for 3½" or 5¼" drives
- Simple assembly
- Blanking plates

**Style 2** will accept two 5¼" 'slimline' or one mounted 5¼" drive, with facility for mounting a controller board.

**Style 8** accepts a 3½" drive of Type B NEC 1037 format

**Style 9** will accept a 3½" drive 25,4mm high or a Hard disk drive 40mm high



KM6-II plug-in disc drive modules

### BLANKING PLATES

A 5¼" slimline blanking plate is available, in RAL 7032 (Grey)

### GUIDES

Modules style 2, is suitable for use with guides accepting 111,8mm plug-in units.

Style 8 and 9 should be used with Eurocard guides.

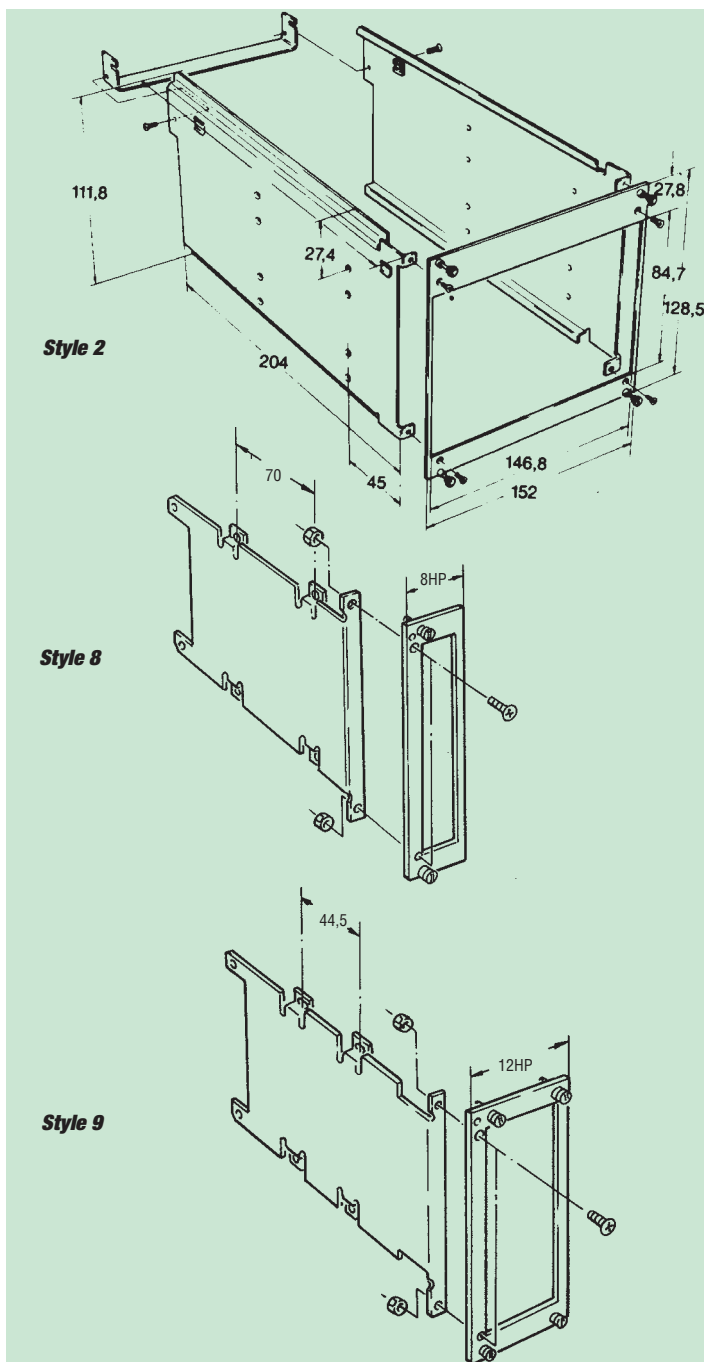
### Ordering information

Description: Plug-in disc drive module

Width	Aperture	Style	Order code
30HP	146,8 x 84,7	Style 2	174-10001G
8HP	102,3 x 25,5	Style 8	174-10198L
12HP	102,3 x 44,1	Style 9	174-10199H

### Order separately

Description	Guide	Qty.	Order code
Guides – Style 2	160mm	10	950-232622J
(four per module reqd.)	220mm	10	950-232663C
Guides – Styles 8 and 9	160mm	10	950-232622J
(two per module reqd.)	220mm	10	950-232663C
Blanking plate			174-10204K
Fixing for blanking plate			174-10205G



# KM6-II Subracks: Front panel and plug-in unit fixings

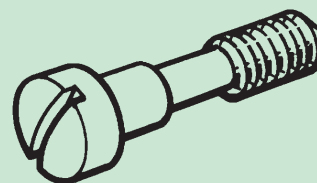
## FRONT PANEL FASTENINGS: CAPTIVE SCREWS AND BUSHES

### Ordering information

Description	Qty	Order code
Front panel screws	100	953-236510K
Front panel to subrack, knurled thumb screw M2,5 x 11	100	953-236512F
Front panel bush, plastic	100	953-236507K
Front panel bush, conductive	100	953-236506A

## Captive screws and bushes

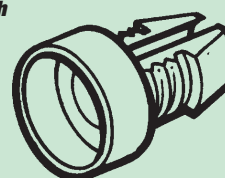
### Front panel screw



### Front panel bush



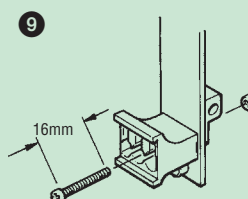
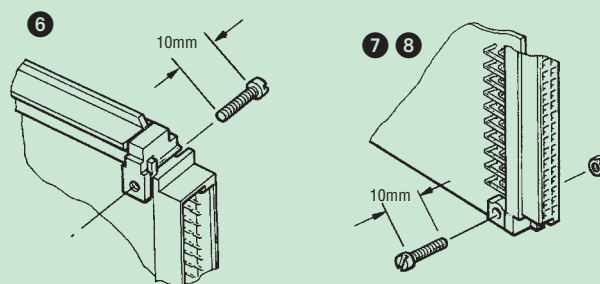
### Conductive front panel bush



## PLUG-IN UNIT AND FRONT PANEL FIXINGS

### Ordering information

Key	Function	Type	Qty.	Order code
6	Connector to mounting block	M2,5 x 10mm	100	41-20505G
7	Connector to PCB	M2,5 x 10mm	100	41-20505G
8	Nut for above	M2,5	100	27-1319C
9	Handle to front panel	M2,5 x 16	100	174-63105C



## FIXINGS

### Ordering information

Location/Size	Pack	Order code
DIN 41612 connector to PCB M2,5 x 10 DIN 84	100	41-20505G
DIN 41617 connector to rear tie bar M2,5 x 6 DIN 84	100	173-12530B
DIN 41617 connector M2,5 x 6 DIN 84	100	173-12530B
DIN 41617 connector Backplane/motherboard to rear tie bar M2,5 x 8 DIN 84	100	41-227257E
DIN 41617 connector to PCB, Card to card mounting bracket, Handle to front panel M2,5 x 16 special DIN 7985	100	174-63105C
Nut M2,5	100	27-1319C
Slide nut for front extrusion types M2,5	10	124-30499B

## VXI Hardware support

### VXI MODULE

#### Features

- Normal and light duty
- Single and double width
- C and D size
- Easy access

In support of the VXIbus, APW offer screened modules in two standard forms.

#### NORMAL DUTY

This module has a relatively high screening capability, and is available in single and double widths, 'C' and 'D' sizes.

The double width version moves the circuit board to the right by one slot. This facility is likely to be needed where the skyline on the wiring side is greater than normal - when using wire wrapping assembly, or where additional components are required to be fitted on that side.

The module consists of a channel section front panel, incorporating ejector handles and card mounting brackets, ventilated left and right covers and EMC sealing. Connector screening is incorporated in the side covers. The Eurocard sized PCB provides the guide rail facility for the module as required in the specification. The construction of the side covers is such that access to the PCB can be simply gained by the removal of four screws.

In order to maintain electrical continuity between the metal side covers it is necessary to incorporate a row of plated through holes along the upper and lower edges of the PCB under the area covered by the RFI sealing strip. The spacing of these holes will obviously affect the degree of screening obtained from the module. In addition, four holes are needed to permit the passage of the fixing screws through the board (drilling details as shown). Continuity between the covers and the front panel is maintained by the incorporation of beryllium copper fingers. More fingers are used to maintain contact between the module and the backplane motherboard ground plane, and between neighbouring modules.

All metal components are conductively finished and the front panel has metal inserts to ensure good electrical contact between the module and the subrack.

The PCB is fitted to the front panel via metal brackets as standard, although plastic brackets are available if they are required.

#### CONNECTOR SHROUD

A connector shroud is available, in beryllium copper, that will enhance the screening performance when it is fitted to the fixed connector on the backplane.

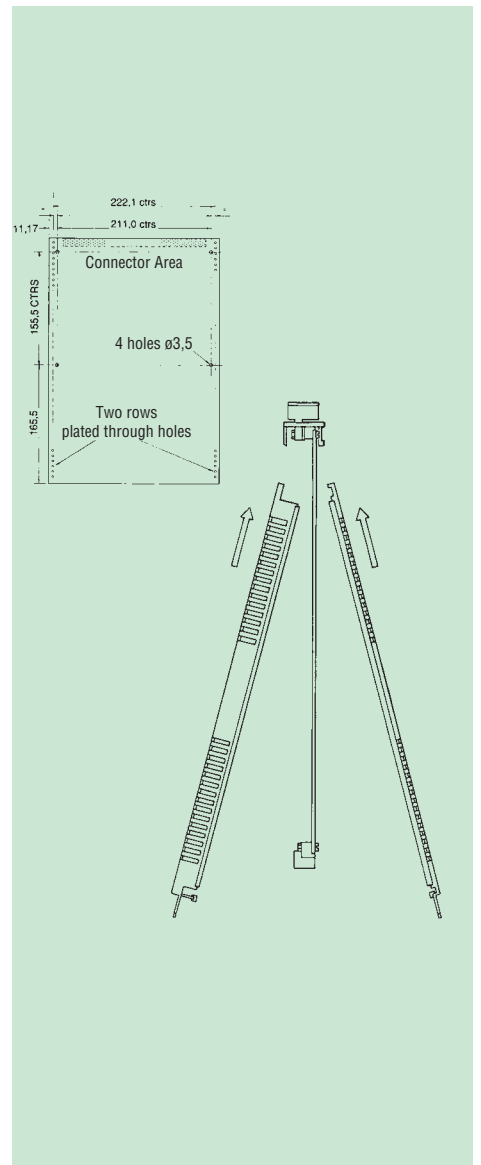
APW have a great deal of expertise in the production of customised subracks and accessories. We will be happy to quote for your needs in special versions, including punched and screen printed front panels and non standard ventilation. In addition, we can offer advice on special EMC screening requirements. Our facilities at Chandlers Ford in the United Kingdom include a screened room for investigation into EMC problems.

#### LIGHT DUTY

Also in single 'C' size, the light duty module can be provided, without any EMC seals, offering a lower cost solution where EMC screening is considered less of a problem. This unit has our two-part front panel and can be upgraded by the addition of seals as needed.



VXI module



# VXI Hardware support

## Contents of kits

Description	Material/Finish
Front panel-normal duty	Aluminium extrusion BS1474HE9TF, finish; conductive
Front panel - light duty	Facia 1,2 aluminium alloy BS1470
NS41/2H Etched and anodised inner conductive finish	1,2 aluminium alloy BS 1470 NS4 1/2H
Side panels	0,9mm zintec steel, zinc and clear passivate

## Ordering information

Description	Order code
'C' Size single - Normal duty module	207-203543A
'C' Size double - Normal duty module	207-203544K
'D' Size single - Normal duty module	207-222524J
'C' Size single - Light duty module	207-222002F
Beryllium copper fingers (strip 84)	930-238243
Channel section sealing strip (1 metre)	174-43905K
Connector shroud	207-203611K

## Typical shielding performance - normal duty modules

These performance figures were obtained by testing a representative sample from production batches. The tests carried out were in accordance with MIL-STD-285, modified where necessary due to the nature of the module. The figures are given as a guideline. Any additions or modifications will have an effect upon the shielding performance and it is, therefore, essential that these units are retested once the final unit is complete.

Performance figures were obtained reading from the right hand (component) side of the module. The figures stated were obtained from our in-house test facility.

## VXI COMPATIBLE FRONT PANEL KITS

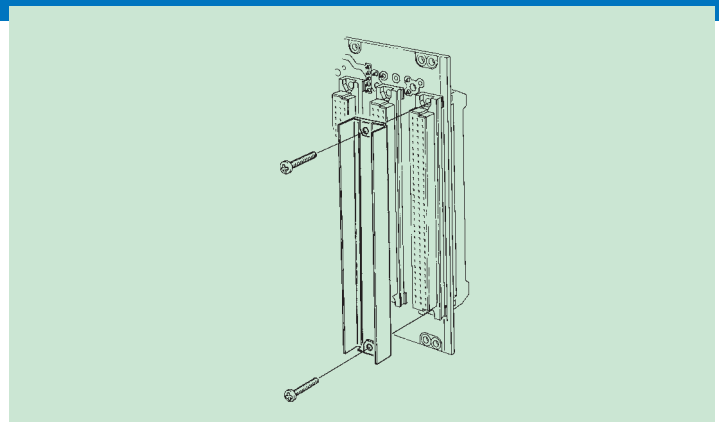
These panels are available separately from the module for situations where EMC screening of the individual pcb is not required, but it is necessary to maintain the overall subrack's RFI screen. Available in the same variants as the VXI modules, the kits include ejector handles, mounting hardware, fixings and EMC fixings.

## Ordering information

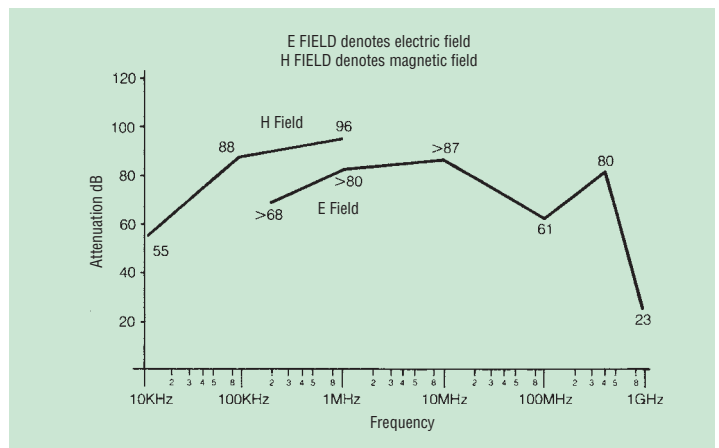
Description	Order code
6U x 6 HP Normal duty	207-227109G
6U x 12 HP Normal duty	207-227110L $\text{\textcircled{M}}$
9U x 6 HP Normal duty	207-227111J $\text{\textcircled{M}}$
6U x 6 HP Light duty	207-227113E $\text{\textcircled{M}}$

$\text{\textcircled{M}}$  = Denotes minimum order quantity, please contact our sales office.

Our backplane facility offers a range of VXI product, including monolithic backplanes and integrated systems. Please contact our backplanes facility on +44 (0)1489 774500 for further details, or visit our web sit at [www.apw.com](http://www.apw.com).



VXI hardware support



VXI module shielding performance



VXI compatible front panel kits



VXI Microrack Development System

# KM6-II: Order code index

Order code	Page	Order code	Page	Order code	Page	Order code	Page	Order code	Page	Order code	Page
<b>021</b>		173-60788B	31	<b>930</b>		950-202694C	23	950-221914H	41	950-240550B	22
021-1884E	35	<b>174</b>		930-238243	77	950-202695A	23	950-222331E	44	950-240551L	22
021-1885L	35	174-10001G	74	930-238243F	19	950-202696K	23	950-222332C	44	950-240552J	22
021-1886F	35	174-10006C	72	930-238243F	47	950-202734F	22	950-222333A	44	950-240553G	22
021-1887A	35	174-10013H	60	930-238243F	56	950-202734F	45	950-223550K	17	950-240553G	47
021-1888G	35	174-10198L	74	<b>950</b>		950-202735D	22	950-223551H	17	950-240554E	22
021-1889B	35	174-10199H	74	950-10014H	31	950-202735D	26	950-224197F	25	950-240555C	22
<b>027</b>		174-10204K	74	950-10015E	31	950-202736B	22	950-224198D	17	950-240556A	22
027-1319C	45	174-10205G	74	950-201275F	39	950-202736B	26	950-229781E	28	950-240557K	22
027-1319C	75	174-12639F	66	950-201276D	27	950-202737L	27	950-229784K	28	950-240557K	47
<b>029</b>		174-12640G	66	950-201277B	27	950-202738J	27	950-232050G	15	950-240558H	22
029-0122C	37	174-12645C	66	950-202001E	22	950-202739G	22	950-232051E	15	950-240559F	22
029-0124D	37	174-12645C	66	950-202001E	28	950-202739G	28	950-232052C	15	950-240562F	19
029-0126E	37	174-12645C	66	950-202001E	31	950-202739G	31	950-232053A	15	950-240563D	19
029-1246L	36	174-12647H	66	950-202001E	33	950-202739G	33	950-232054K	17	950-240564B	19
029-1247F	36	174-12647H	66	950-202001E	47	950-202739G	68	950-232055H	17	950-240565L	19
029-1248A	36	174-12648E	66	950-202001E	48	950-202739G	69	950-232056F	17	950-240574K	19
029-1249G	36	174-12648E	66	950-202581E	15	950-202740L	22	950-232057D	17	950-240575H	19
029-1251H	36	174-12649B	66	950-202582C	15	950-202740L	28	950-232563L	15	950-240576F	19
<b>041</b>		174-12965B	66	950-202583A	15	950-202740L	31	950-232565G	17	950-240577D	19
041-20505G	75	174-12966K	66	950-202584K	15	950-202740L	33	950-232566E	17	950-240578B	19
041-227257E	45	174-12967G	66	950-202585H	15	950-202740L	48	950-232567C	17	950-240579L	19
041-227257E	75	174-12968D	66	950-202586F	15	950-202742G	22	950-232568A	15	950-240580D	19
<b>050</b>		174-12969A	66	950-202587D	15	950-202742G	26	950-232569K	15	950-240581B	19
050-10116G	43	174-13019E	63	950-202588B	15	950-202743E	22	950-232570C	17	950-240582L	19
050-10117C	43	174-13020F	63	950-202589L	17	950-202743E	26	950-232571A	17	950-240583J	19
050-10118K	43	174-13020F	65	950-202590D	17	950-202744C	27	950-232599A	17	950-240584G	19
<b>124</b>		174-13021C	66	950-202591B	17	950-202745A	27	950-232601G	17	950-240585E	19
124-30499B	28	174-13021C	66	950-202592L	17	950-202746K	44	950-232602E	17	950-240587A	19
124-30499B	31	174-13021C	66	950-202593J	17	950-202751F	44	950-232603C	17	950-240588K	19
124-30499B	75	174-13022L	66	950-202594G	17	950-202783D	25	950-232604A	15	950-240589H	19
<b>173</b>		174-13022L	66	950-202595E	17	950-202784B	25	950-232605K	15	950-240590A	19
173-10036K	43	174-13023H	66	950-202596C	17	950-202785L	25	950-232607F	15	950-242850B	32
173-12530B	45	174-13023H	66	950-202597A	17	950-202786J	25	950-232608D	15	950-249489L	31
173-12530B	45	174-13024E	66	950-202598K	17	950-202787G	25	950-232609B	17	950-249491B	31
173-12530B	75	174-13024E	66	950-202604H	39	950-202788E	25	950-232610F	17	950-251174D	35
173-12659F	35	174-13025B	66	950-202605F	39	950-202789C	25	950-232622J	72	950-251366F	33
173-12704C	33	174-13025B	66	950-202606D	39	950-202790G	25	950-232622J	74	950-259278G	22
173-12706H	33	174-13027G	66	950-202607B	39	950-202791E	25	950-232632G	25	950-259279E	22
173-13821D	34	174-13027G	66	950-202609J	39	950-202792C	25	950-232633E	25	950-259286H	25
173-202287K	54	174-13035J	66	950-202610B	39	950-202793A	25	950-232635A	25	950-259287F	25
173-202288H	54	174-13036F	66	950-202611L	39	950-202794K	25	950-232654J	15	950-259371F	20
173-202514C	71	174-26556C	58	950-202612J	39	950-202795H	26	950-232662J	32	950-259372D	20
173-202579H	33	174-34978G	72	950-202615C	39	950-202796F	26	950-232662J	42	950-259417H	22
173-202579H	45	174-39403A	54	950-202616A	25	950-202797D	27	950-232662J	73	950-259418F	22
173-202956D	71	174-43905K	70	950-202618H	25	950-202798B	27	950-232662J	74	950-259419D	22
173-232666F	32	174-43905K	77	950-202620K	25	950-202799L	28	950-232663C	72	950-261553A	60
173-232667D	32	174-63105C	75	950-202622F	39	950-202799L	31	950-232663G	73	950-261554K	60
173-232669L	57	<b>207</b>		950-202623D	40	950-202799L	33	950-232663C	74	950-276108B	32
173-232670D	57	207-203543A	77	950-202624B	40	950-202971C	42	950-232663G	42	950-276109L	32
173-232671B	57	207-203544K	77	950-202625L	41	950-202972A	42	950-232663G	74	950-276110D	32
173-232672L	57	207-203611K	77	950-202626J	41	950-203688D	40	950-232664E	32	950-34244C	31
173-232679H	34	207-222002F	77	950-202635H	32	950-221649A	56	950-232665C	32	950-34246H	31
173-24169H	61	207-222524J	77	950-202636F	32	950-221909A	22	950-232665C	62	950-34247E	31
173-24768C	34	207-227109G	77	950-202641B	41	950-221909A	26	950-232665C	64	<b>951</b>	
173-253258D	57	207-227110L	77	950-202642L	41	950-221911C	25	950-232668H	32	951-203797B	70
173-283071B	54	207-227111J	77	950-202643J	26	950-221912A	25	950-233073A	26	951-203798L	70
173-283274K	54	207-227113E	77	950-202644G	26	950-221913K	41	950-240549J	22	951-203799J	70

# KM6-II: Order code index

Order code	Page	Order code	Page	Order code	Page	Order code	Page	Order code	Page
951-232371A	55	951-263905L	68	956-241020L	47	957-236041J	51	957-236340K	62
951-232372K	55	951-263906J	68	956-241021J	47	957-236042G	51	957-236341H	62
951-232404A	55	951-263907G	68	956-241024C	47	957-236043E	51	957-236386H	64
951-232416E	55	951-263908E	68	956-241026K	47	957-236044C	51	957-236387F	64
951-232417C	55	951-263909C	69	956-241028F	47	957-236045A	51	957-236388D	64
951-232445J	26	951-263910G	69	956-241029D	47	957-236046K	51	957-236389B	64
951-232445J	55	951-263911E	69	956-241030H	47	957-236047H	51	957-236390F	64
951-242957J	23	951-263912C	69	956-241031F	47	957-236048F	51	957-236391D	64
951-242957J	47	951-263913A	69	956-241032D	47	957-236049D	51	957-236393L	64
951-242958G	23	951-263914K	69	956-242701D	45	957-236050H	51	957-236394J	64
951-242959E	23	951-263915H	69	956-242702B	45	957-236051F	51	957-236395G	64
951-242960J	23	951-263916F	69	956-242703L	45	957-236052D	51	957-236397C	64
951-242961G	23	<b>953</b>		956-242870C	47	957-236053B	51	957-236398A	64
951-242962E	23	953-235335G	52	956-242870C	48	957-236054L	51	957-236399K	64
951-242963C	23	953-235336E	52	956-242871A	48	957-236055J	51	957-236400G	64
951-242963C	56	953-235339K	52	956-243237J	47	957-236056G	51	957-236401E	64
951-242964A	23	953-235340C	52	956-243237J	48	957-236057E	51	957-236402C	64
951-242964A	56	953-235341A	52	956-243238G	48	957-236059A	51	957-236403A	64
951-242965K	23	953-235342K	52	956-243239E	32	957-236061C	51	957-236404K	64
951-242965K	56	953-235343H	52	956-243240J	32	957-236062A	51	957-236405H	64
951-242968D	23	953-235344F	52	956-243261A	45	957-236063K	51	957-236406F	64
951-242968D	56	953-235345D	52	956-243262K	45	957-236064H	51	957-236407D	64
951-242969B	23	953-235346B	52	956-242263H	45	957-236065F	51	957-236409L	64
951-242969B	56	953-235376D	52	956-243264F	45	957-236065F	52	957-236410D	64
951-242970F	23	953-235442F	52	956-245524G	49	957-236066D	51	957-239589A	55
951-242970F	56	953-235444B	52	956-250292K	49	957-236067B	51	957-239590K	55
951-242971D	23	953-235446J	52	956-250293H	49	957-236068L	51	957-244797B	53
951-242971D	56	953-235449C	52	956-250499K	47	957-236069J	51	957-244798L	53
951-242972B	23	953-236016G	53	956-250500G	47	957-236070B	51	957-244799J	53
951-242972B	56	953-236022A	53	956-250500G	47	957-236071L	51	957-244800F	53
951-242975G	23	953-236023K	53	956-250501E	47	957-236072J	51	957-244801D	54
951-242975G	56	953-236121K	59	956-250502C	47	957-236073G	51	957-244802B	54
951-259284D	23	953-236124D	59	956-250503A	47	957-236073G	52	957-244803L	54
951-259285B	23	953-236125B	59	<b>957</b>		957-236180F	58		
951-263113L	68	953-236126L	59	957-235347A	52	957-236181D	58		
951-263114J	68	953-236184H	58	957-235348K	52	957-236182B	58		
951-263115G	68	953-236190B	58	957-235349H	52	957-236290K	62		
951-263116E	68	953-236501L	60	957-235351K	52	957-236294B	62		
951-263117C	68	953-236503G	60	957-235352H	52	957-236297G	62		
951-263118A	68	953-236504E	60	957-235353F	52	957-236298E	62		
951-263119K	68	953-236505C	60	957-235354D	52	957-236304C	62		
951-263120C	68	953-236506A	68	957-235355B	52	957-236305A	62		
951-263121A	69	953-236506A	69	957-235356L	52	957-236306K	62		
951-263-122K	69	953-236506A	75	957-235357J	52	957-236307H	62		
951-263123H	69	953-236507K	75	957-235358G	52	957-236308F	62		
951-263124F	69	953-236510K	75	957-235359E	52	957-236309D	62		
951-263125D	69	953-236512F	75	957-235360J	52	957-236310H	62		
951-263126B	69	953-236516J	58	957-235459A	52	957-236311F	62		
951-263127L	69	953-250838E	61	957-235460E	52	957-236312D	62		
951-263128J	69	953-250839C	61	957-235461C	52	957-236313B	62		
951-263129G	69	953-250840G	61	957-235462A	52	957-236315J	62		
951-263130L	69	953-250841E	61	957-235463K	52	957-236316G	62		
951-263755D	68	953-250842C	61	957-235465F	52	957-236317E	62		
951-263755D	69	953-250843A	61	957-235466D	52	957-236318C	62		
951-263756B	68	953-250844K	61	957-235467B	52	957-236319A	62		
951-263756B	69	<b>956</b>		957-235469J	52	957-236321C	62		
951-263903D	68	956-232663G	32	957-235470B	52	957-236322A	62		
951-263904B	68	956-241018J	47	957-236038J	51	957-236339F	62		

# KM6-RF Subracks: Injector/extractor handle introduction

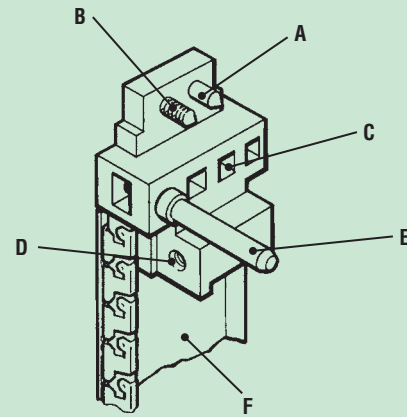
## KM6-RF FRONT PANEL AND HANDLE OPTIONS

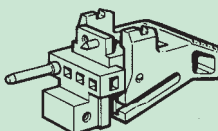
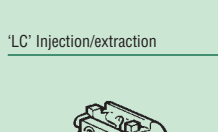

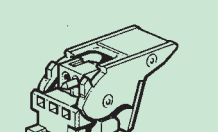


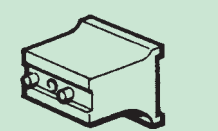
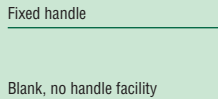


This table is intended to help you select the most suitable combination of handles and front panels.

### Key

A	Pre-location pin
B	Captive screw
C	Coding peg locations
D	Card mounting
E	ESD/alignment pin
F	Front panel with EMC fingers

Stylised picture only



Feature	A	B	C	D	E	F	Page
Handle type							
	X	X	X	X	X	✓	49
	✓	✓	✓	✓	✓	X	46
	✓	✓	✓	✓	X	X	46
	X	✓	✓	✓	✓	X	46
	X	✓	✓	✓	X	✓	50
'LC' Injection/extraction	✓	✓	✓	✓	X	✓	50
	X	X	X	X	X	✓	49
	X	✓	✓	✓	✓	X	47
	✓	✓	X	✓	X	X	47
	X	✓	✓	✓	✓	✓	51
'MC' Injection/extraction	✓	✓	X	✓	X	✓	51
	X	X	X	X	X	✓	49
	✓	✓	X	✓	X	X	52
'K' Injection/extraction	✓	✓	X	✓	X	✓	52
	X	✓	X	✓	X	✓	53
Ejection only, IEC	X	✓	X	✓	X	✓	53
	X	✓	X	X	X	✓	54
Fixed handle	X	✓	X	X	X	✓	54
	X	X	X	X	X	✓	55
Blank, no handle facility	X	X	X	X	X	✓	55

# KM6-RF Subracks: Injector/extractor handles

## KM6-RF TYPE 'LC' - INJECTOR/EXTRACTOR HANDLES

### Features

- Three versions available
- IEEE1101.10 and .11 compliant
- Colour options as standard
- Various configurations for coding, pre-location and ESD protection available
- Long throw for Metric connectors (5mm)
- Rugged version
- Ident location area
- Ganging option for use on multiple card plug-in units
- Push fit onto panel

This handle has the following possibilities:

**With or without a front extrusion location pin**, to maintain accurate location against the sideways pressure of EMC fingers.

**With or without the ESD/ location pin**. The ESD/location pin determines its position in the frame (ie top or bottom)

**In black or light grey RAL7035**

**Coding keys should be ordered separately**

### Contents of kit

Description	Qty.	Material/Finish
Injector/ extractor (pre-assembled)		
Handle moulding	1	Glass filled polycarbonate UL94-V0, Black or light grey RAL 7035
Die cast bracket	1	Zinc Bright nickel plate
Return spring	1	0,3mm stainless steel
ESD pin (optional)	1	Stainless steel

### Ordering information

Colour	ESD/location	Extrusion pre-	Order Code
	Pin	location pin	
Black, top C.B.A.	Yes	Yes	<b>959-278296</b>
Black, bottom F.E.D.	Yes	Yes	<b>959-278295</b>
Black, top and bottom	No	Yes	<b>959-277048</b>
Black, top C.B.A.	Yes	No	<b>959-278298</b>
Black, bottom F.E.D.	Yes	No	<b>959-278297</b>
Black, top and bottom	No	No	<b>959-277053</b>
Light grey, top C.B.A.	Yes	Yes	<b>959-278300</b>
Light grey, bottom F.E.D.	Yes	Yes	<b>959-278299</b>
Light grey, top and bottom	No	Yes	<b>959-277049</b>
Light grey, top C.B.A.	Yes	No	<b>959-278302</b>
Light grey, bottom F.E.D.	Yes	No	<b>959-278301</b>
Light grey, top and bottom	No	No	<b>959-277060</b>

### GANGING EXTRUSION

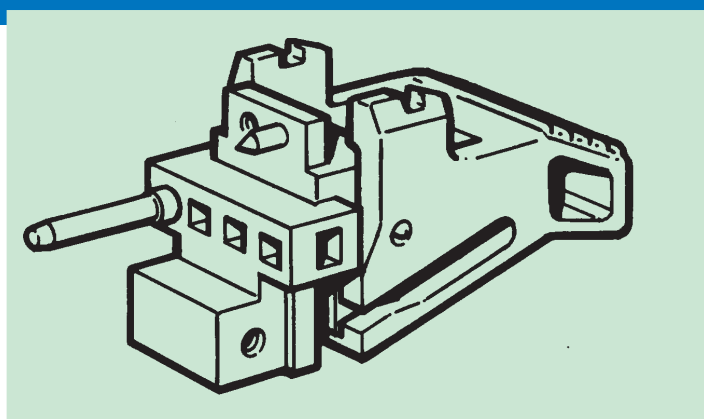
Two type LC handles can be ganged together using these extrusion kits. The extrusion fits into the side recesses and can be secured via the screws supplied. Two lengths are available, one to suit two handles on 4HP pitch (normally on an 8HP panel); the Universal is supplied in 200mm lengths for cutting down according to need.

### Contents of kit

Description
Ganging extrusion: 4HP version - 10 extrusions plus 20 fixing screws
Ganging extrusion: Universal version - 10 extrusions plus 100 fixing screws

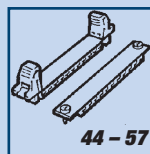
### Ordering information

Description	Order Code
4HP Ganging kit	<b>959-281492</b>

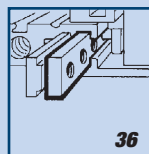


Type 'LC' handle only

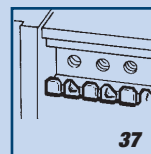
### Order separately



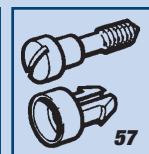
Front panels



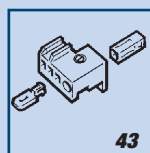
Front panel pre-location



Seals to front panel



Front panel screws & inserts



Coding key, grounding



# KM6-RF Subracks: Injector/extractor handles

## TYPE 'MC' HANDLE ONLY

### Features

- IEEE1101.10 compliant
- Non coded version
- Self locking version-needs no screw retention
- Lock/unlock component in contrasting colour
- Ident location area
- Push-fit onto front panel

This handle has the following possibilities:

**Black or light grey (RAL 7035) body with Jade Green sliding lock component.** Top or bottom. This handle is handed by the ESD pin and coding pocket identification.

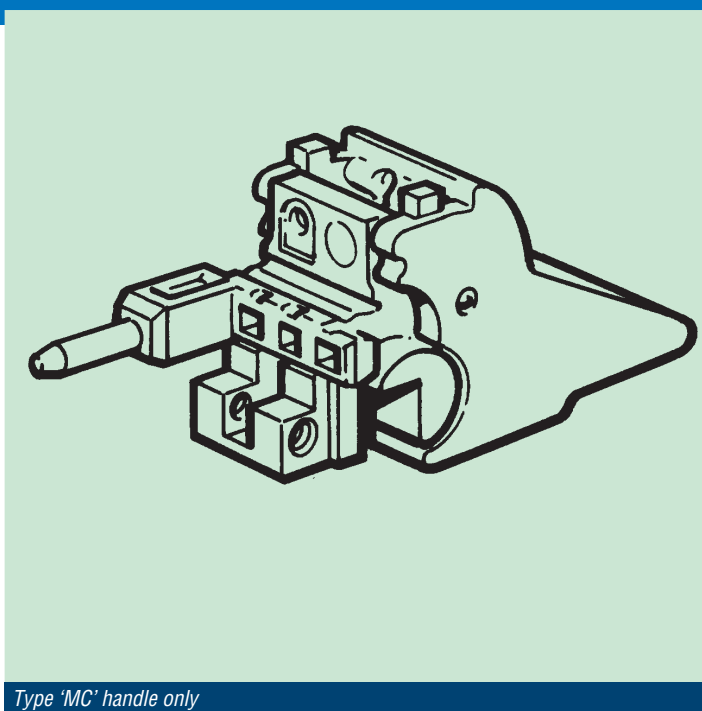
**Without coding and ESD.** This version has no coding or ESD pin but includes the extrusion pre-location facility to prevent sideways movement of the front panel against the pressure exerted by the fingers. It is not handed.

### Contents of kit

Description	Qty.	Material/Finish
Handle moulding, pre-assembled	1	
Lock component, pre-assembled	1	
Die cast bracket, pre-assembled	1	Zinc, Bright
Return spring, pre-assembled	1	
Front fixing screw	1	
Assembly instructions		

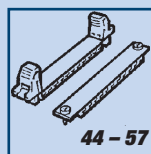
### Ordering information

Handle colour		IEEE/Non coded	Order Code
Black/green	Top CBA	IEEE	951-263988
Black/green	Bottom FED	IEEE	951-263987
Light grey/green	Top CBA	IEEE	951-263986
Light grey/green	Bottom FED	IEEE	951-263985
Black/green	Top and bottom	Non coded	951-263990
Light grey/green	Top and bottom	Non coded	951-263989

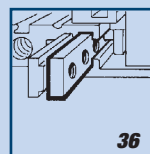


Type 'MC' handle only

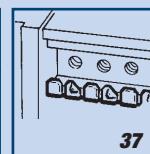
### Order separately



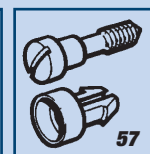
Front panels



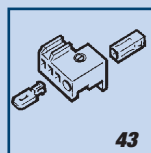
Front panel pre-location



Seals to front panel



Front panel screws & inserts



Coding key, grounding

# KM6-RF Subracks: Injector/extractor handles

## TYPE 'K' HANDLE ONLY

This handle provides injection and extraction according to IEEE1101.10 but does not offer the coding or ESD compatibility called for in .10 and .11; it is designed to eject against the face of the front extrusion, and will therefore operate as an ejector in an IEC 60297-3 situation.

### Features

- Injector/ extractor for IEEE1101.10 front extrusion
- Automatically assumes correct position during insertion
- Backwards compatibility as an ejector to IEC60297-3
- Push-fit onto front panel
- Ident location area

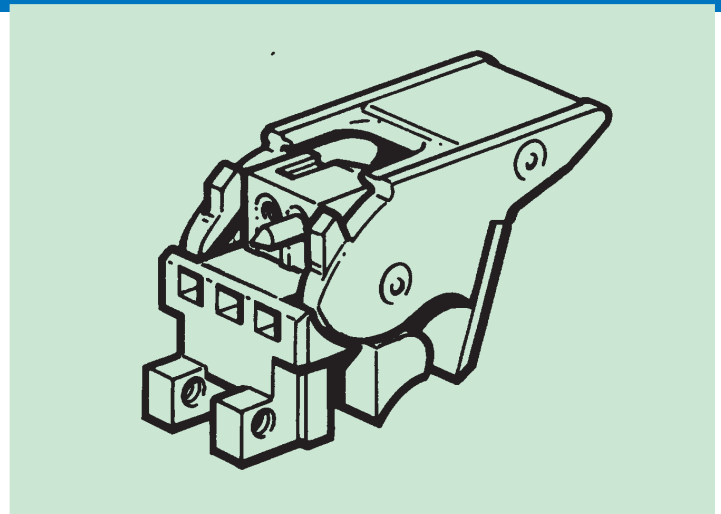
The Type K is not handed. The bracket includes a front extrusion location pin, to maintain accurate location against the sideways pressure of EMC fingers.

### Contents of kit

Description	Qty.	Material/Finish
Moulded handle (pre-assembled)	1	Glass filled polycarbonate UL94-V0, Black, RAL9005
Die cast bracket (pre-assembled)	1	Zinc Bright nickel plate
Return spring (pre-assembled)	1	Stainless steel
Front panel screw	1	
Assembly instructions		

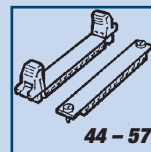
### Ordering information

Description	Order Code
Handle with extrusion pre-location pin	951-263868

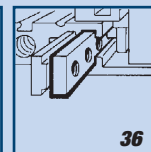


Type 'K' handle only

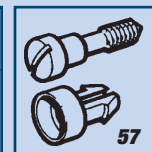
### Order separately



Front panels



Front panel pre-location



Front panel screws & inserts

# KM6-RF Subracks: Front Panels - IEEE1101.10 and .11 compliant

## FRONT PANEL ONLY

APW's latest range of panels are manufactured from extruded aluminium and can be supplied in clear chromate form or with a light grey polyester overlay.

These panels are cut out to accept a number of injector/extractor variants which should be ordered separately. The injector/extractors simply and quickly push fit and are retained by means of spring sprags, no screw being necessary.

3U panels accept an injector/extractor at the bottom only. A separate card mounting bracket (plastic or metal) is required for the top position.

A limited range of the most popular sizes is available in complete kit form for ease of ordering.

### Contents of kit

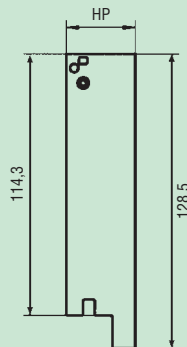
Description	Qty.	Material/Finish
Front panel	1	Aluminium extrusion ,Clear chromate
EMC finger strip (fitted)	1	Stainless steel
Overlay (if fitted)	1	0,2mm polyester Light grey

### Ordering information

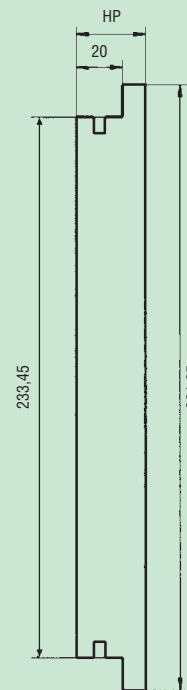
Height x Width	Clear chromate	Polyester overlay	
	finish	RAL 7035	
3U	4HP	<b>951-263840</b>	<b>951-263852</b>
	5HP	<b>951-263841</b>	<b>951-263853</b>
	6HP	<b>951-263842</b>	<b>951-263854</b>
	8HP	<b>951-263843</b>	<b>951-263855</b>
	10HP	<b>951-263844</b>	<b>951-263856</b>
	12HP	<b>951-263845</b>	<b>951-263857</b>
6U	4HP	<b>951-263846</b>	<b>951-263858</b>
	5HP	<b>951-263847</b>	<b>951-263859</b>
	6HP	<b>951-263848</b>	<b>951-263860</b>
	8HP	<b>951-263849</b>	<b>951-263861</b>
	10HP	<b>951-263850</b>	<b>951-263862</b>
	12HP	<b>951-263851</b>	<b>951-263863</b>

For details of our front panel customising service refer to page 44, or contact our Sales and Applications team on +44(0) 1489 774500.

### 3U Front Panel

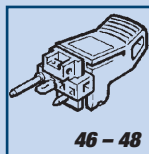


### 6U Front Panel

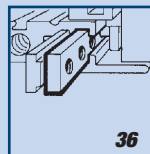


KM6-RF Front panels - IEEE1101.10 and .11 compliant

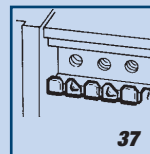
### Order separately



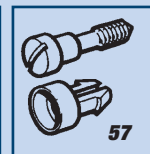
Injector/extractor handles



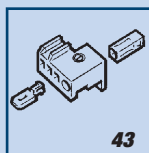
Front panel pre-location



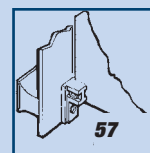
Seals to front panel



Front panel screws & inserts



Coding pins



Additional card mounting bracket

# KM6-RF Subracks: Front Panel with Injector/ extractor handles

## COMPLETE KIT OPTIONS WITH TYPE 'LC' HANDLE

These kits include the appropriate front panels and injector/ extractor handles. The 3U versions require a card mounting bracket, either plastic or metal, for the top of the panel.

### Features

- Clear chromate finish
- One order code only - panel and handle assembly
- With or without ESD

Functions, materials and finishes are as described in the previous pages.

### Contents of kit

Description	Qty	Material/Finish
Handle assembly	1 on 3U, 2 on 6 and 9U	
Front panel with EMC fingers (fitted)		Chromate
Fixings		

### Ordering information

#### With extrusion pre-location but no ESD pin

Nominal Height	Nominal Width	Order code	Order code
		Black	Light Grey
3U	4HP	951-150054	951-150040
	8HP	951-150055	951-150041
	4HP	951-150056	951-150042
6U	8HP	951-150057	951-150043
9U	4HP	-	951-150044

#### With ESD pin, no extrusion pre-location

Nominal Height	Nominal Width	Order code	Order code
		Black	Light Grey
3U	4HP	951-150058	951-150035
	8HP	951-150059	951-150036
	4HP	951-150060	951-150037
6U	8HP	951-150061	951-150038
9U	4HP	-	951-150039

For details of our front panel customising service refer to page 44, or contact our Sales and Applications team on +44(0) 1489 774500.

## GANGING EXTRUSION

Two type LC handles can be ganged together using these extrusion kits. The extrusion fits into the side recesses and can be secured via the screws supplied. Two lengths are available, one to suit two handles on 4HP pitch (normally on an 8HP panel); the Universal is supplied in 200mm lengths for cutting down according to need.

### Contents of kit

Description
Ganging extrusion: 4HP version - 10 extrusions plus 20 fixing screws
Ganging extrusion: Universal version - 10 extrusions plus 100 fixing screws

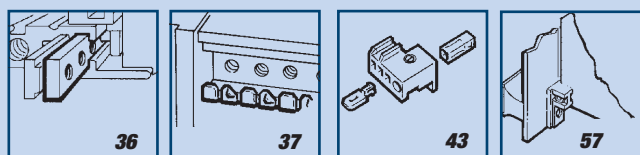
### Ordering information

Description	Order Code
4HP Ganging kit	959-281492



Complete kit options with Type 'LC' handle

### Order separately



Front panel pre-location

Seals to front panel

Coding keys/grounding

Additional card mounting brackets

# KM6-RF Subracks: Front Panel with Injector/ extractor handles

## COMPLETE KIT OPTIONS WITH TYPE 'MC' HANDLE

These kits include the appropriate front panels and injector/ extractor handles. 3U versions require a card mounting bracket, plastic or metal, for the top of the panel.

### Features

- Clear chromate finish
- One order code needed only - panel and handle assembly
- Two versions of handles

Functions, materials and finishes are as described in the previous pages.

### Ordering information

#### No coding or ESD pin, with extrusion pre-location

Nominal Height	Nominal Width	Order code Black/green	Order code Light Grey/green
3U	4HP	<b>951-150046</b>	<b>951-150030</b>
	8HP	<b>951-150047</b>	<b>951-150031</b>
6U	4HP	<b>951-150048</b>	<b>951-150032</b>
	8HP	<b>951-150049</b>	<b>951-150033</b>

#### With ESD pin and coding, no extrusion pre-location

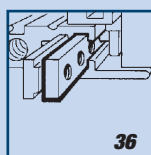
Nominal Height	Nominal Width	Order code Black/green	Order code Light Grey/green
3U	4HP	<b>951-150050</b>	<b>951-150025</b>
	8HP	<b>951-150051</b>	<b>951-150026</b>
6U	4HP	<b>951-150052</b>	<b>951-150027</b>
	8HP	<b>951-150053</b>	<b>951-150028</b>
9U	4HP	<b>951-150034</b>	<b>951-150029</b>

For details of our front panel customising service refer to page 44, or contact our Sales and Applications team on +44(0) 1489 774500.

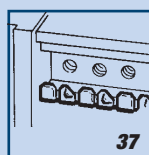


KM6-RF front panel injector/extractor handles

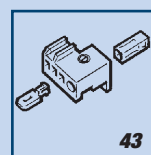
### Order separately



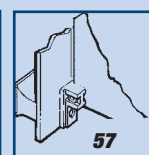
Front panel pre-location



Seals to front panel



Coding keys/grounding



Additional card mounting brackets

# KM6-RF Subracks: Front Panel with Injector/ extractor handles

## COMPLETE KIT OPTIONS WITH TYPE 'K' HANDLE

These kits include the appropriate front panels and injector/ extractor handles. 3U versions require a card mounting bracket, plastic or metal, for the top of the panel.

### Features

- Clear chromate finish
- One order code needed only - panel and handle assembly

Functions, materials and finishes are as described in the previous pages.

### Contents of kit

Description	Qty	Material/Finish
Handle assembly	1 on 3U, 2 on 6U	
Front panel with EMC fingers (fitted)		Chromate
Fixings		

This version has no coding but offers pre-location via a pin in the die cast bracket which locates into a pierced strip in the front extrusion. The handle is black.

### Ordering information

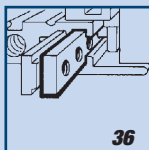
#### No ESD or coding, with extrusion pre-location

Nominal Height	Nominal Width	Order code
3U	4HP	951-263879
	8HP	951-263882
6U	4HP	951-263885
	8HP	951-263888

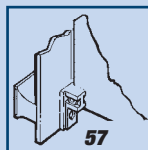
For details of our front panel customising service refer to page 44, or contact our Sales and Applications team on +44(0) 1489 774500.



### Order separately



Front panel pre-location



Additional card mounting brackets

# KM6-RF Subracks: EMC front panels with ejector handles

For use in situations where a high level of screening is required these extruded front panels are supplied complete with stainless steel fingers to make contact with adjacent panels and with the KM6-RF mounting angles.

- Good mechanical strength and high level of electromagnetic screening.
- Ejector handle provides assistance in removal of plug-in units with high retention force connectors
- Latest geometry to IEEE1101.10 minimises intrusion into the solder area of Eurocards
- Compatible with all KM6-RF and IEC 297-3 subrack front extrusions
- Available with chromate finish front face or with polyester overlay in RAL 7035 light grey

This range of extruded front panels meets the geometry associated with the latest mechanical standard, IEEE1101.10, having an overall depth of 6,3mm. This minimises the interference of the left side with the solder side of Eurocards. The stainless steel finger strip which is fitted to the right side interacts with neighbouring panels that have a similar geometry. At the subrack interface, it is necessary to have matching features in order to maintain the EMC performance across the front.

The kit is supplied complete with die cast card mounting brackets and metal front panel screw retaining bushes for maximum conductivity to the subrack.

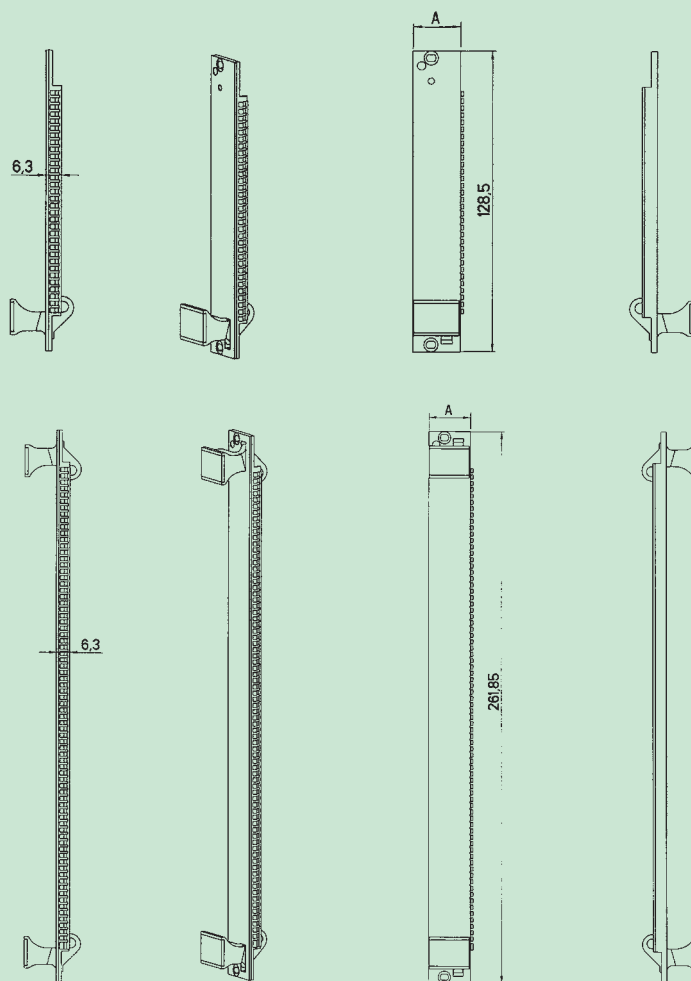
## Contents of kit

Description	Qty	Material /Finish
Extruded front panel	1	Aluminium, all chromate finish or with front overlay, vertical grain
Set contact fingers	1	Stainless steel
Overlay (optional)	1	0,2mm polyester, RAL 7035 light grey
Handles:	1 on 3U, 2 on 6U	Makrolon 9425 black
Handle ident labels:	1 per handle	1,5mm aluminium, anodised or 1,25mm with overlay
Card mounting brackets	2	Zinc die cast
Retaining screws M2,5	2	Steel, chromed
Bushes	2	Metal, chromed
All fixings		

## Ordering information

Nominal Height	Nominal Width	Width A in mm	RF front panel chromate finish	RF front panel with overlay
			<b>Order code</b>	<b>Order code</b>
3U	4HP	19,92	<b>951-263100</b>	<b>951-263750</b>
	6HP	30,08	<b>951-263106</b>	<b>951-263751</b>
6U	4HP	19,92	<b>951-263101</b>	<b>951-263771</b>
	6HP	30,08	<b>951-263107</b>	<b>951-263772</b>

For details of our front panel customising service refer to page 44, or contact our Sales and Applications team on +44(0) 1489 774500.



KM6-RF EMC front panels - with ejector handles

# KM6-RF Subracks: Front panels - fixed handles

Providing backwards compatibility with existing front panels or where the use of injector/ extractor handles is not necessary or desirable.

- n Latest industry standard front panel geometry
- n Stainless steel fingers
- n Clear chromate finish or with polyester overlays
- n Full custom service available

The channel section provides good mechanical strength. The inserts in these kits are metal for maximum conductivity. Up to 8HP wide, panels have two fixing screws, 10 and 12HP have four.

We offer a comprehensive customising service in front panels and overlays.

## Contents of kit

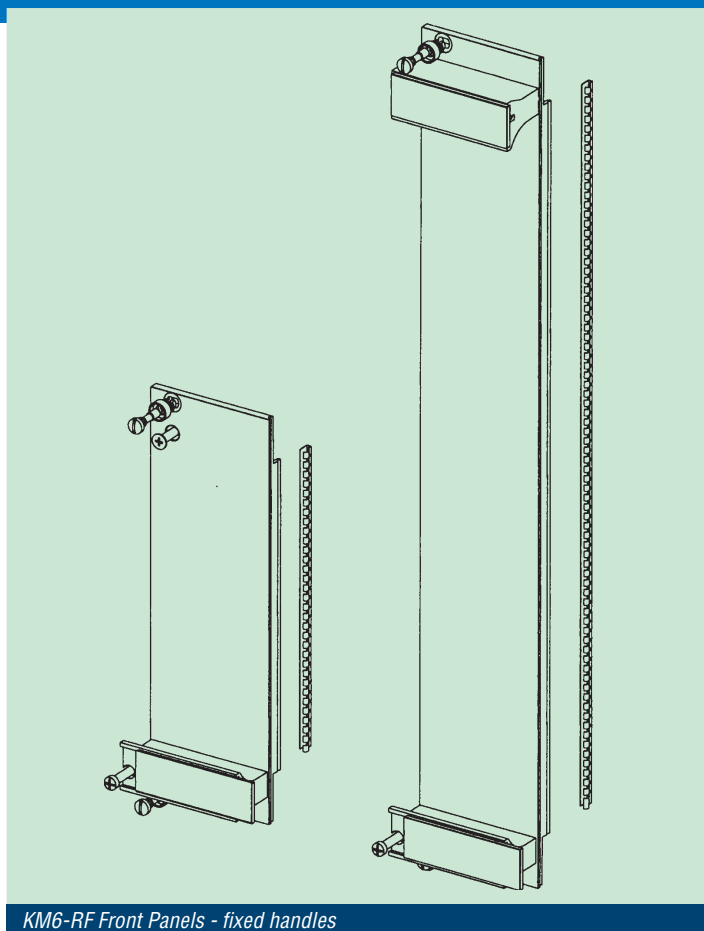
Description	Qty	Material/Finish
1 x front panel	1	Al extrusion, Clear chromate
1 x overlay (where fitted)	1	0,2mm polyester, Light grey RAL7035
1 x EMC finger strip	1	Stainless steel
Handles	1 on 3U, 2 on 6U	Luranyl 2452/1 or equivalent Black
Handle ident	1 on 3U, 2 on 6U	Al alloy 1,5mm , Clear anodised or 1,25mm (with overlay)

Fixings and assembly instructions

## Ordering information

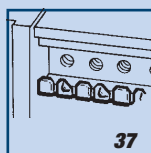
Nominal dimensions		Order Code	Order Code
Height	Width	Chromate finish	With overlay
3U	4HP	951-263098	951-263199
	5HP	951-263102	951-263200
	6HP	951-263104	951-263201
	8HP	951-263108	951-263202
	10HP	951-263794	951-263796
	12HP	951-263110	951-263203
6U	4HP	951-263099	951-263219
	5HP	951-263103	951-263220
	6HP	951-263105	951-263221
	8HP	951-263109	951-263222
	10HP	951-263795	951-263797
	12HP	951-263111	951-263223

For details of our front panel customising service refer to page 44, or contact our Sales and Applications team on +44(0) 1489 774500.

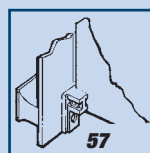


KM6-RF Front Panels - fixed handles

## Order separately



Seals to front panels



Additional card mounting brackets



# KM6-RF Subracks: Blanking Front Panels - IEEE1101.10

## BLANKING FRONT PANELS

These panels can be used to fill unused slots or where no handle is necessary. The versions with pre-location pin interface with a pierced strip in the front extrusion to prevent sideways movement due to spring pressure.

- Latest industry standard front panel geometry
- Stainless steel fingers
- Clear chromate finish or with polyester overlays
- Full custom service available
- With or without pre-location pin

Screws and retaining inserts (metal or plastic) should be ordered separately - supplied in packs of 100

### Contents of kit

Description	Qty.	Material/Finish
Front panel	1	Aluminium extrusion ,Clear chromate
EMC finger strip (fitted)	1	Stainless steel
Overlay (if fitted)	1	0,2mm polyester Light grey

### Ordering information

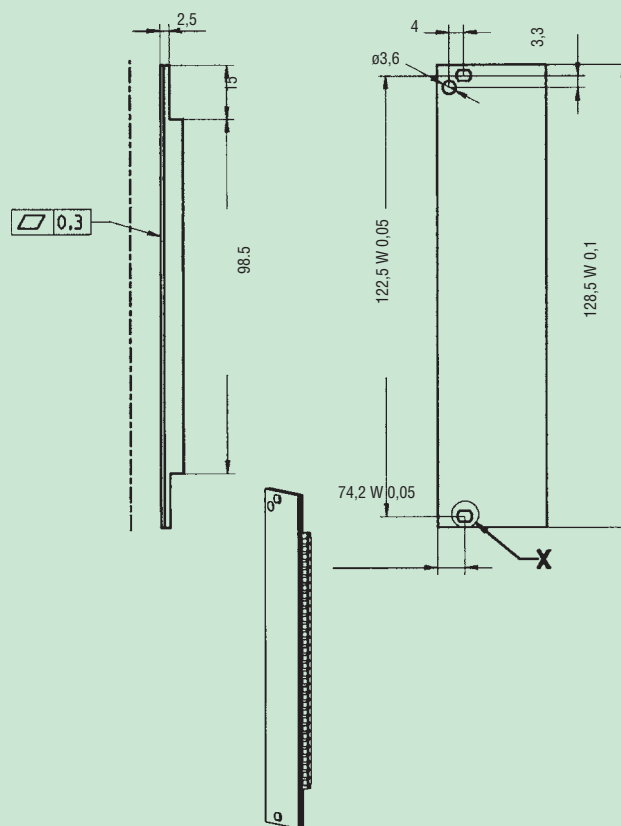
#### Without pre-location pin

Nominal Height	Nominal Width	Chromate finish Order Code	With overlay Order Code
3U	4hp	951-263991	951-150000
	5hp	951-263993	951-150001
	6hp	951-263995	951-150002
	8hp	951-263997	951-150003
	10hp	951-263999	951-150004
	12hp	951-264001	951-150005
6U	4HP	951-264003	951-150006
	5HP	951-264005	951-150007
	6HP	951-264007	951-150008
	8HP	951-264009	951-150009
	10HP	951-264011	951-150010
	12HP	951-264013	951-150011
9U	4hp	951-263974	951-150045

#### With pre-location pin

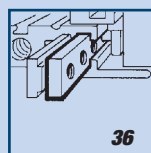
3U	4HP	951-150012	951-150019
	5HP	951-150013	951-150020
	6HP	951-150014	951-150021
	8HP	951-150062	951-150065
	10HP	951-150063	951-150066
	12HP	951-150064	951-150067
6U	4HP	951-150015	951-150022
	5HP	951-150016	951-150023
	6HP	951-150017	951-150024
	8HP	951-150068	951-150071
	10HP	951-150069	951-150072
	12HP	951-150070	951-150073
9U	4HP	951-150018	951-150074
M2,5x 11 captive screws		pk 100	953-236510
Metal retaining inserts		pk 100	953-236506

## 3U Blanking Front Panel

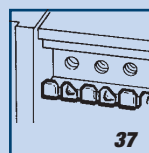


KM6-RF Blanking front panels - IEEE1101.10 and .11

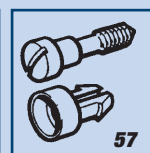
### Order separately



Front panel pre-location



Seals to front panel



Front panel screws & inserts

# KM6-RF Subracks: Plug-in units

## FOR USE WITH 100MM GUIDES

Good design of the components of these plug-in units ensures excellent EMC performance between neighbouring units. The IEEE1101.10 front panel permits integration into screened subracks.

- 160mm Eurocard compatible
- Simple assembly
- Good electromagnetic shielding within systems
- IEEE1101.10 front panel geometry
- Excellent mechanical strength for mounting and protection of components
- Clear chromate finish front panel or with light grey overlay
- Comprehensive customising service available

Eurocard PCBs occupy slot 3 from the left hand nominal pitchline and are retained in position by means of PCB/connector brackets.

The extrusion has tapped strip carrying features, facilitating the mounting of non Eurocard components.

Brackets and tapped strips should be ordered separately (see table below)

### Contents of kit

Description	Qty.	Material/Finish
<b>Plug-in units</b>		
Front panel	1	Al extrusion, clear chromate
Overlay (if fitted)	1	0,2mm polyester, light grey RAL7035
Handle	1	Luranyl 2452/1 or equivalent, black
Handle ident	1	1,5mm al alloy, clear anodised or 1,25mm al alloy, with overlay
Fixings and assembly instructions		

### Two rail versions

Side extrusion	1	Al extrusion, natural
Wrap-round right cover	1	1mm steel, pre-galvanised

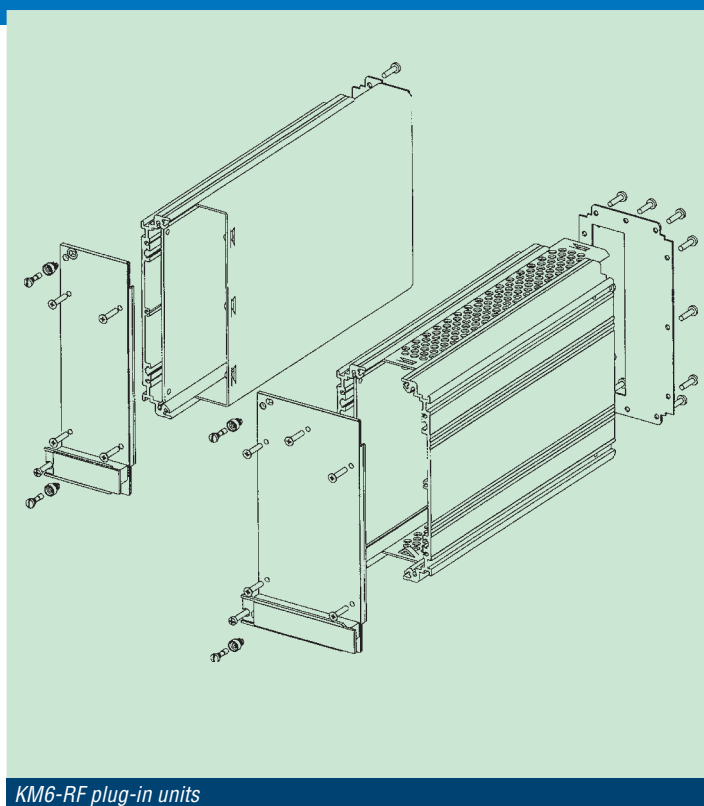
### Four-rail version

Side extrusions	2	Al alloy, natural
Ventilated top/bottom covers	2	1mm steel, pre-galvanised

### Ordering information

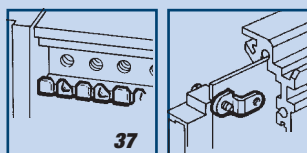
Nominal dimensions		Available PCB component height	Order code Chromate finish	Order code With overlay
Height	Width			
2 rail 3U	6HP	12,6mm	<b>951-263131</b>	<b>951-263132</b>
2 rail 3U	8HP	22,8mm	<b>951-263133</b>	<b>951-263134</b>
4 rail 3U	12HP	60,56mm	<b>951-263135</b>	<b>951-263136</b>
PCB/connector brackets (pk 5prs plus fixings)			–	<b>951-263755</b>
Tapped strip (pk 10)			–	<b>951-263756</b>

For details of our front panel customising service refer to page 44, or contact our Sales and Applications team on +44(0) 1489 774500.



KM6-RF plug-in units

### Order separately



Seals to front panels

PCB/connector mounting brackets

# KM6-RF Subracks: Injector/ extractor accessories

## FRONT PANEL CAPTIVE SCREWS AND BUSHES

For panel only situation where the width of the panel or type of panel requires additional fixing (Injector/extractors are supplied with screws) and complete panel kits.

- Positive retention
- Plastic or metal bushes

### Contents of kit

Description	Material/Finish
Front panel fixings: Screws M2,5 x 11	
Front panel fixings: Bushes	Plastic, black
Front panel fixings: Bushes	Metal

### Ordering information

Description	Qty.	Order code
Front panel screws	pk.100	953-236510
Front panel bush, plastic	pk.100	953-236507
Front panel bush, conductive	pk.100	953-236506

## EMC SEALS – VERTICAL FINGER STRIP

This version clips onto IEEE1101.10 front panels, rack mounting angles or rear closing panels, providing electrical contact to neighbouring components. Select by nominal panel height.

### Contents of kit

Description	Qty	Material/Finish
Vertical finger strip	10	Stainless steel

### Ordering information

Description	Qty.	Order code
Vertical seal for 3U	pk.10	959-266523
Vertical seal for 6U	pk.10	959-266524

## NORMAL PCB MOUNTING BRACKETS

The normal PCB mounting brackets are for use where front panels are mounted into IEC/DIN subracks and caseframes that require the conventional 2,54mm gap between the rear of the front panel and the PCB.

Available in two versions; moulded in Noryl or zinc die-cast. The die cast version is now tapped in both axes, making assembly easier and quicker.

### Contents of kits

Description	Qty.	Material
Normal bracket	10	Luranyl 2452/1, green or die cast zinc

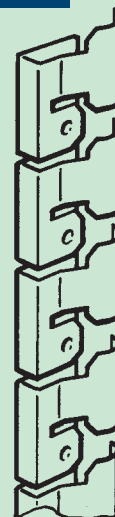
### Ordering information

Description	Qty	Order code
Normal brackets (plastic) and fixings	10	173-232669
Normal brackets (metal) and fixings	10	173-253258

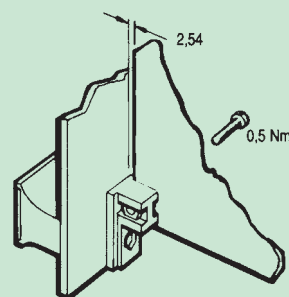
## Captive screws and bushes



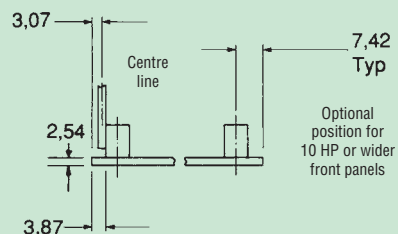
## Vertical finger strip



## Normal bracket



### PLAN VIEW



Note: Plastics are adversely affected by solvents and care should be taken to avoid contamination of plastic brackets.

# KM6-RF Subracks: Order code index

Order code	Page	Order code	Page	Order code	Page	Order code	Page	Order code	Page	Order code	Page
<b>173</b>		951-150033	51	951-263131	56	951-263986	47	959-262255	25	959-275802	28
173-060788	35	951-150034	51	951-263132	56	951-263987	47	959-262256	30	959-275803	28
173-202579	43	951-150035	50	951-263133	56	951-263988	47	959-262257	30	959-275804	28
173-232669	57	951-150036	50	951-263134	56	951-263989	47	959-262258	30	959-275805	28
173-253258	57	951-150037	50	951-263135	56	951-263990	47	959-262259	30	959-275806	28
<b>950</b>		951-150038	50	951-263136	56	951-263991	55	959-262260	30	959-275807	28
950-010014	35	951-150039	50	951-263199	54	951-263993	55	959-262261	30	959-275808	28
950-010015	35	951-150040	50	951-263200	54	951-263995	55	959-262262	40	959-275809	28
950-202001	36	951-150041	50	951-263201	54	951-263997	55	959-262263	40	959-275810	28
950-202739	36	951-150042	50	951-263202	54	951-263999	55	959-262264	40	959-275811	28
950-202740	36	951-150043	50	951-263203	54	951-264003	55	959-262265	40	959-275812	28
950-202799	36	951-150044	50	951-263219	54	951-264005	55	959-262266	31	959-275813	28
950-232662	28	951-150045	55	951-263220	54	951-264007	55	959-262267	31	959-275813	30
950-232662	42	951-150046	51	951-263221	54	951-264009	55	959-262268	41	959-275814	28
950-232663	42	951-150047	51	951-263222	54	951-264011	55	959-262269	41	959-275814	30
950-242850	28	951-150048	51	951-263223	54	951-264013	55	959-262270	41	959-275815	28
950-242850	42	951-150049	51	951-263750	53	<b>953</b>		959-262274	39	959-275815	30
950-251366	42	951-150050	51	951-263751	53	953-236506	55	959-262275	38	959-275816	28
950-276330	36	951-150051	51	951-263755	56	953-236506	57	959-262276	39	959-275817	28
950-277491	28	951-150052	51	951-263756	56	953-236507	57	959-262277	38	959-275817	30
950-277491	42	951-150053	51	951-263771	53	953-236510	55	959-262278	39	959-275818	28
950-277494	42	951-150054	50	951-263772	53	953-236510	57	959-262279	19	959-275819	28
950-277496	42	951-150055	50	951-263794	54	<b>959</b>		959-262280	23	959-275819	30
<b>951</b>		951-150056	50	951-263795	54	959-262220	31	959-262281	19	959-275820	28
951-150000	55	951-150057	50	951-263796	54	959-262221	31	959-262282	23	959-275820	30
951-150001	55	951-150058	50	951-263797	54	959-262222	31	959-266523	37	959-275821	28
951-150002	55	951-150059	50	951-263840	49	959-262223	31	959-266523	57	959-275821	30
951-150003	55	951-150060	50	951-263841	49	959-262224	33	959-266524	37	959-275822	28
951-150004	55	951-150061	50	951-263842	49	959-262224	34	959-266524	57	959-275823	30
951-150005	55	951-150062	55	951-263843	49	959-262224	34	959-266525	37	959-275824	28
951-150006	55	951-150063	55	951-263844	49	959-262225	37	959-266527	32	959-275824	30
951-150007	55	951-150064	55	951-263845	49	959-262227	33	959-266528	32	959-275825	28
951-150008	55	951-150065	55	951-263846	49	959-262230	33	959-266529	33	959-275825	30
951-150009	55	951-150066	55	951-263847	49	959-262231	33	959-266530	39	959-275826	28
951-150010	55	951-150067	55	951-263848	49	959-262232	34	959-266531	39	959-275826	30
951-150011	55	951-150067	55	951-263849	49	959-262233	34	959-267632	20	959-275827	28
951-150012	55	951-150068	55	951-263850	49	959-262234	34	959-267633	20	959-275827	30
951-150013	55	951-150069	55	951-263851	49	959-262235	34	959-267634	20	959-275828	28
951-150014	55	951-150070	55	951-263852	49	959-262236	43	959-267635	24	959-275828	30
951-150015	55	951-150071	55	951-263853	49	959-262237	31	959-267636	24	959-275829	28
951-150016	55	951-150072	55	951-263854	49	959-262238	21	959-267637	24	959-275829	30
951-150017	55	951-150073	55	951-263855	49	959-262239	35	959-267639	18	959-275831	28
951-150018	55	951-150074	55	951-263856	49	959-262240	21	959-267641	22	959-275832	28
951-150019	55	951-263098	54	951-263857	49	959-262241	21	959-267643	18	959-275832	28
951-150020	55	951-263099	54	951-263858	49	959-262242	21	959-267644	22	959-275833	28
951-150021	55	951-263100	53	951-263859	49	959-262243	25	959-267645	20	959-275835	28
951-150022	55	951-263101	53	951-263860	49	959-262244	25	959-267646	20	959-275836	28
951-150023	55	951-263102	54	951-263861	49	959-262245	25	959-267647	20	959-275837	28
951-150024	55	951-263103	54	951-263862	49	959-262246	19	959-267648	24	959-275838	28
951-150025	51	951-263104	54	951-263863	49	959-262247	23	959-267649	24	959-275839	28
951-150026	51	951-263105	54	951-263868	48	959-262248	19	959-267650	24	959-277031	43
951-150027	51	951-263106	53	951-263879	52	959-262249	23	959-267651	18	959-277034	43
951-150028	51	951-263107	53	951-263882	52	959-262250	21	959-267652	22	959-277039	43
951-150029	51	951-263108	54	951-263885	52	959-262251	21	959-267653	18	959-277040	43
951-150030	51	951-263109	54	951-263888	52	959-262252	21	959-267654	22	959-277048	46
951-150031	51	951-263110	54	951-263974	55	959-262253	25	959-275800	28	959-277049	46
951-150032	51	951-263111	54	951-263985	47	959-262254	25	959-275801	28	959-277053	46