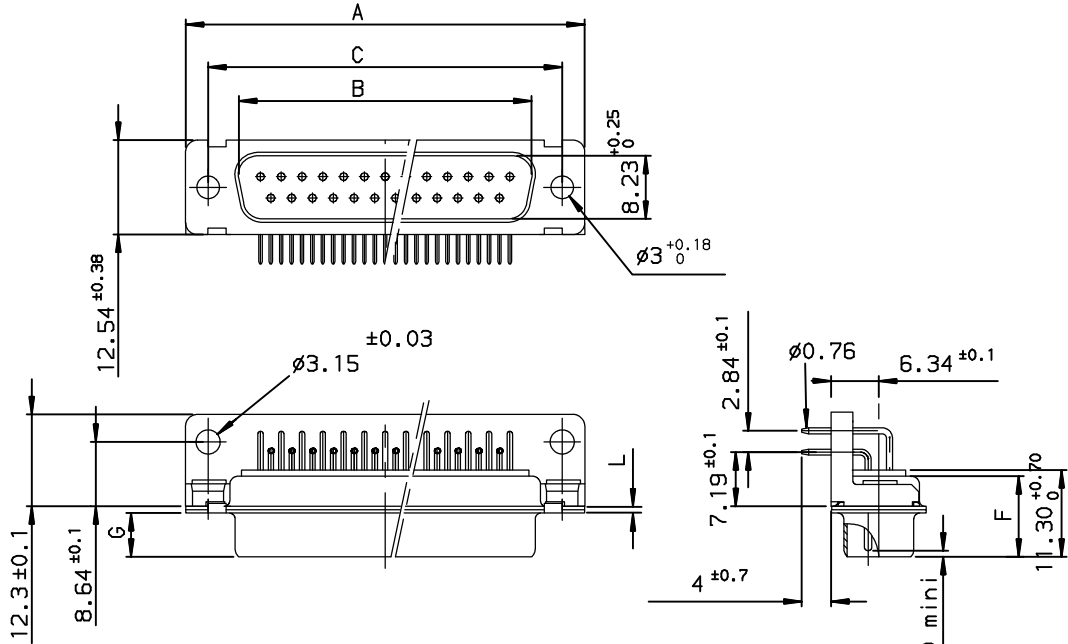




Copyright FCI.



ELECTRICAL DATA

-I max	7.5A
-Contact resistance	<55ma under 7.5 A
-Insulation resistance	>5000Ma
-TEST VOLTAGE	
contact/contact	>1000V
contact/ground	>1200V

MECHANICAL DATA

-Contact force	≥0.20N
-Retention force	>40N
-Insertion force	according to MIL-DTL-24308
-Withdrawal force	according to MIL-DTL-24308
-Mechanical endurance	:500 matings / unmatings
-Material shell	steel ,cadmium
-Material insulator	glass filled thermoplastic UL94V0
-Material contacts	pin:brass.
-Finish on contact area	gold 50µ inch min over nickel 30-150µinch min
-Finish on termination end	tin-Lead 100µinch min over nickel 30-180µinch min
-Solderability	according to MIL-DTL-24308
-Schock	according to MIL-DTL-24308
-Vibration	according to MIL-DTL-24308

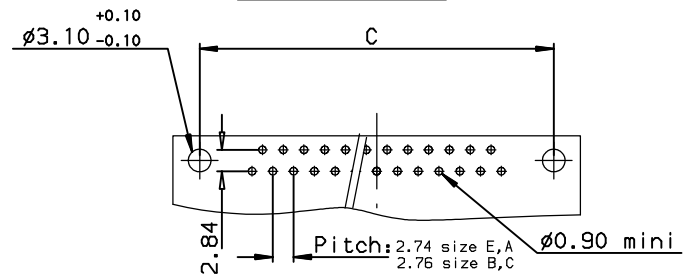
ENVIRONMENTAL DATA

-Climatic category	-55° / +125°/56
-Corrosion	salt spray:48h

Dimensions are in millimeters

Shell size	Number of contacts	A ^{+0.76} ₀	B ^{+0.25} ₀	C ±0.12	F ^{+0.51} ₀	G	H ^{+0.51} ₀	L ^{+0.22} ₀	Part number
E	09	30.43	16.79	24.99	10.47	5.90 ^{+0.15} ₀	19.02	0.80	DEM09P752
A	15	38.76	25.12	33.32	10.47	5.90 ^{+0.15} ₀	27.25	0.80	DAM15P752
B	25	52.65	38.84	47.04	10.43	5.70 ^{+0.25} ₀	41.02	0.80	DBM25P752
C	37	68.94	55.30	63.50	10.56	5.70 ^{+0.25} ₀	57.45	1.00	DCM37P752

PC BOARD LAYOUT



European Views

www.fciconnect.com		surface ISO 1302 ✓	tolerance std ISO 406 ISO 1101	projection mm
TOLERANCES UNLESS OTHERWISE SPECIFIED				
Dr	JOUBERT	1995/06/29	ANGULAR	LINEAR
Eng	PESSON	1995/06/29	0.X	±0.1
Chr	LEGARE	1995/06/29	0.XX	±0.1
Appr	LEGARE	1995/06/29	0.XXX	±0.1
Product family			D-SUB	Spec ref -
title PIN CONNECTORS D SUB RIGHT ANGLED				Rev. E
SPILL				C01-8637-0450
catalog no				CUSTOMER sheet 1 of 1

rev	ecn no	dr	date
D	-	MPE	2003/07/15
E	LS06-0097	LGO	2006/07/28
-	-	-	-
-	-	-	-
-	-	-	-
-	-	-	-