

**2,000 V - 5,000 V Rectifiers**  
**2.0 A - 5.0 A Forward Current**  
**70 ns Recovery Time**

**1N6513U**  
**1N6515U**  
**1N6517U**

**SURFACE MOUNT**  
**HERMETICALLY SEALED**



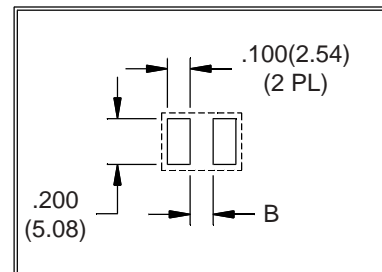
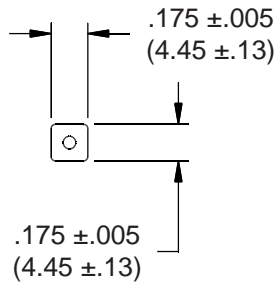
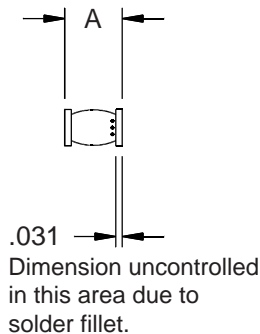
JANTX JANTXV

**ELECTRICAL CHARACTERISTICS AND MAXIMUM RATINGS**

Part Number	Working Reverse Voltage (V <sub>rwm</sub> )	Average Rectified Current (I <sub>o</sub> )		Reverse Current @ V <sub>rwm</sub> (I <sub>r</sub> )		Forward Voltage (V <sub>f</sub> )		1 Cycle Surge Current t <sub>p</sub> =8.3ms (I <sub>fsm</sub> )	Repetitive Surge Current (I <sub>frm</sub> )	Reverse Recovery Time (3) (T <sub>rr</sub> )	Thermal Impd. θ <sub>J-C</sub>	Junction Cap. @50VDC @1kHz (C <sub>j</sub> )
		55°C(1)	100°C(2)	25°C	100°C	25°C	25°C					
	Volts	Amps	Amps	μA	μA	Volts	Amps	Amps	Amps	ns	°C/W	pF
1N6513U	2000	5.0	3.3	1.0	25	3.5	2.0	100	15	70	4	25
1N6515U	3000	3.5	2.3	1.0	25	6.0	1.5	60	10	70	4	20
1N6517U	5000	2.0	1.3	1.0	25	8.0	1.0	40	8	70	4	16

(1)TC=55°C (2)TC=100°C (3)I<sub>f</sub>=0.5A, I<sub>r</sub>=1.0A, I<sub>rr</sub>=0.25A \*Op. Temp.= -65°C to +175°C Stg. Temp.= -65°C to +200°C

Markings:  
 Three Dots for polarity.



Part	A	B
1N6513U	.240 ±.015 (6.10 ±.38)	.105(2.67)
1N6515U	.260 ±.015 (6.60 ±.38)	.125(3.18)
1N6517U	.280 ±.015 (7.11 ±.38)	.145(3.68)



Dimensions: In. (mm) • All temperatures are ambient unless otherwise noted. • Data subject to change without notice.



**VOLTAGE MULTIPLIERS INC.**  
 8711 W. Roosevelt Ave.  
 Visalia, CA 93291

TEL 559-651-1402  
 FAX 559-651-0740  
 www.voltagemultipliers.com

**6**

# 1N6513U 1N6515U 1N6517U

