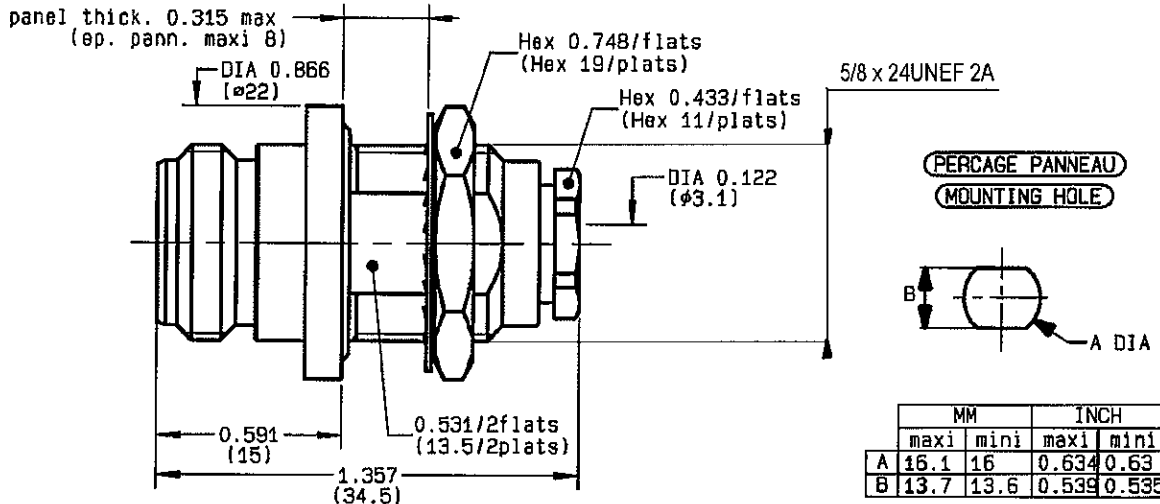


**STRAIGHT BULKHEAD JACK PANEL SEAL**  
**CLAMP TYPE - CABLE 2.6/50+75**

**R161.321.000**

**SERIES N**



NOMINAL IMPEDANCE	<b>50</b> $\Omega$
FREQUENCY RANGE	<b>0-11</b> GHz
TEMPERATURE RATING	<b>-55/+155</b> °C
V.S.W.R	<b>1.40</b> + x F(GHz)Maxi
RF INSERTION LOSS	<b>0.048</b> $\sqrt{F}$ (GHz) dB Maxi
VOLTAGE RATING	<b>250</b> Veff Maxi
DIELECTRIC WITHSTANDING VOLTAGE	<b>750</b> Veff Mini
INSULATION RESISTANCE	<b>5000</b> M $\Omega$ Mini
HERMETIC SEAL	<b>NA</b> Atm.cm <sup>3</sup> /s
LEAKAGE (pressurized only)	<b>IP 67</b>
MECHANICAL DURABILITY	<b>500</b> Cycles
WEIGHT	<b>43</b> gr
SPECIFICATION	

- CABLES : **K02252D**  
**K02252D SPL**  
**KX 22A**  
**RD 316**  
**RS 179**  
**RS 187**  
**RS 188**  
**RS 316**

OTHERS CHARACTERISTICS

CABLE RETENTION	<b>40</b> N Mini
CENTER CONTACT RETENTION	
Axial force - mating end	<b>27</b> N Mini
Axial force - opposite end	<b>27</b> N Mini
Torque	<b>NA</b> cm.N Mini
RECOMMENDED TORQUES	
Mating	<b>NA</b> cm.N
Panel nut	<b>500</b> cm.N
Clamp nut	<b>150</b> cm.N

CONNECTOR PARTS	MATERIALS	FINISH	(all values are given in micrometers)
BODY	BRASS	BBR 2	
OUTER CONTACT	BRASS	BBR 2	
CENTER CONTACT	BERYLLIUM COPPER	GOLD 0.5 OVER NICKEL 2	
INSULATOR	PTFE	-	
GASKET	SILICONE RUBBER	-	
OTHERS PIECES	BRASS	BBR 2	

BONDINI

ISSUE <b>0633 B</b>	CREATION DATE <b>12/10/1992</b>	FILE PART-NUMBER
------------------------	------------------------------------	------------------



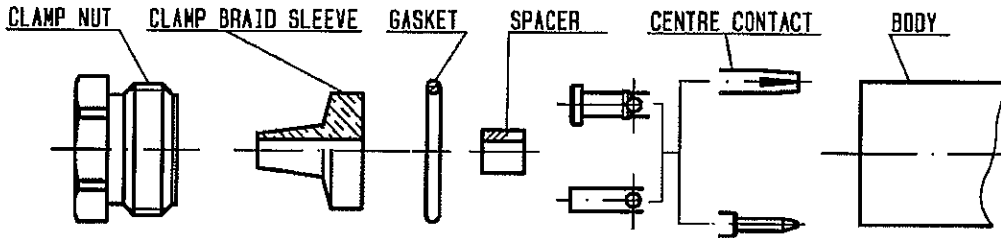
The information given here is subject to change without notice. Design changes may be in order to improve the product.

*Connect to the future*



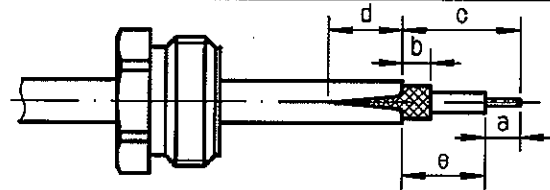
**R161.321.000**

ISSUE 0633 B SERIES N



①

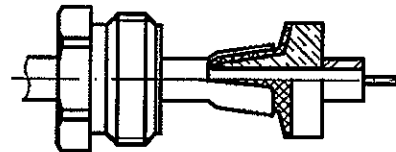
Slide clamp nut onto cable .  
Strip the cable .  
Cut the jacket ( 2 slots )  
apart if necessary .  
-



Stripping	a	b	c	d	e
inch	0.157	0.079	0.315	0.079	0.157
mm	4	2	8	2	4

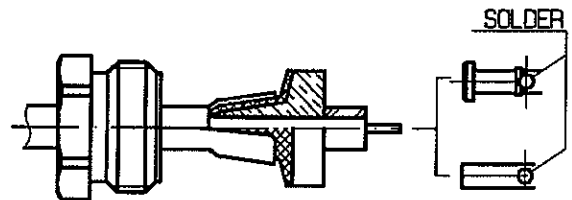
②

Slide the clamp braid sleeve between  
cable dielectric and braid .  
Cut the braid flush with the clamp  
braid sleeve .  
Slide the spacer .  
-  
-  
-



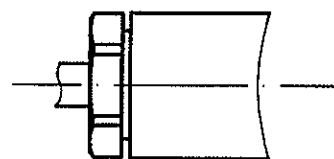
③

Solder the cable inner conductor into  
centre contact .  
Slide the back nut over the clamp  
assembly .  
-  
-  
-



④

Mount the gasket into the connector .  
Screw sub-assembly into the connector  
body .  
( recommended coupling torque 13.27 in.lb )  
-



Hex. : 0.433/flats

BONOMINI