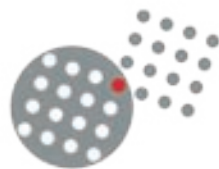


D Subminiature Connectors



SOURIAU
Connection Technology



D - subminiature connectors

SOURIAU

Connectors and interconnect systems for harsh environments

The company designs, manufactures and markets high performance interconnect solutions for severe environments from industrial broadline and universal ranges to complex system with integrated functions: filtering, high speed data transmission, hermetic seal, separation mechanism, remote handling, underwater mating, ...



Industrial



Aeronautical



Equipment & system

The dedicated end markets for SOURIAU's products are aeronautical, defense-space and industrial



Railway
Geophysics
Manufacturing environment
Instrumentation
Automation & process



Civil & military aircraft
Helicopter
Weapon delivery system
Avionics



Military marine
Communications
Satellites
Launcher & missile

SOURIAU was established in 1917 and has been created by successive acquisitions of the industrial, aeronautical, defense and space activities of SOURIAU, JUPITER and BURNDY.

The Group's products are engineered and manufactured in the USA and Dominican Republic, Europe and Morocco, Japan and India, and sold by a worldwide sales and marketing organization, and in addition to SOURIAU's offices, a large network of licensed distributors and agents.

SOURIAU complies with most of national and international Quality Assurance Standards, production unit with ISO 14001

Quality Certificate
Management System

ISO 9001

Environment Certificate
Management System

ISO 14001

Quality Certificate
Management System

Aeronautic Industry : EN 9100



D - subminiature connectors

Description

Souriau D-Sub connectors are used for military/aerospace applications and in industrial field: information systems, communication systems, industrial electronic...

D-Sub connectors are designed to ensure the connection function in all applications where weight and dimension are very important.

They are especially used as Input/Output connectors in interface fonctions. So, they are subjects to mechanical constraints that are sometimes severes. In order to prevent risks (pulling up, accidental unmating...), a large range of accessories is supplied (Catalogue coming soon).

Contents

| | | | |
|-----------------------------------|---|------------------------|----|
| Description..... | 3 | 8630 Series HE501..... | 10 |
| Contents..... | 3 | 8630 Series HE508..... | 12 |
| Technical characteristics..... | 4 | SMA MIL-C Series..... | 14 |
| D-Sub layouts & Drilling holes... | 5 | 8635 Series..... | 16 |
| Panel cut out & mounting..... | 7 | Hermetics Series..... | 18 |
| D-Sub shell dimensions..... | 8 | | |
| D-Sub mounting options..... | 9 | | |



D - subminiature connectors

Technical characteristics

| Characteristics | | Series | Crimp version | | Crimp + PCB version | Solder + PCB version |
|--------------------------|--|--------|---|------------------------|---|---|
| | | | 8630 HE501/HE308 | SMA MIL | 8635 High density | Hermetic |
| Environmental | Temperature | | -55°C to +125°C/ -55°C to +155°C | -55°C to +125°C | -55°C to +155°C | -55°C to +125°C |
| | Salt spray | | 48 H (cadmium) 24 H (Tin) 24 H (Zinc) | 48 H (cadmium) | 48 H (cadmium) 24 H (Tin) 24 H (Zinc) | 48 H (cadmium) |
| | Damp heat | | 56 days | 56 days | 56 days | 56 days |
| | Sealing version | | No/Yes | No | Yes | Yes |
| | Hermeticity | | - | - | - | Under air helium differential pressure, leakage $\leq 1.04 \times 10^{-5}$ Atm.cm ³ /S |
| Standard | NFC 93425 | | HE501/HE508 | - | - | - |
| | MIL C 24308 C | | - | MIL | Compliant to MIL | Compliant to MIL |
| Material | Shell | | Steel | Steel | Steel | Steel |
| | Housing | | Thermoplastic/ Thermodur | Thermoplastic | Thermodur | Glass bead |
| | Contact | | Copper alloy | Copper alloy | Copper alloy | Ferrous alloy |
| Plating | Shell | | Cadmium, Tin, Zinc | Cadmium | Cadmium, Tin, Zinc | Cadmium, Gold, Tin bright, Tin mat, Nickel |
| | Contact | | Gold over Nickel | Gold over Nickel | Gold over Nickel | Gold, Tin mat, Nickel |
| Electrical | Contact rating (max) | | 7.5 A | 7.5 A | 5 A | 5 A |
| | Test voltage Max Vrms/ 50 Hz | | 1000 Vrms | 1000 Vrms | 1000 Vrms | 750 Vrms |
| | Nominal voltage Vrms/ 50 Hz | | 300 Vrms | 300 Vrms | 300 Vrms | N/A |
| | Insulation resistance | | ≥ 5000 M Ω | ≥ 5000 M Ω | ≥ 5000 M Ω | ≥ 5000 M Ω |
| | Contact resistance | | ≤ 7.3 m Ω | ≤ 7.3 m Ω | ≤ 7.3 m Ω | ≤ 14 m Ω |
| Mechanical & Dimensional | Insertion/extraction force per contact (N) | | 5N max/0.3 min | 5N max/0.3 min | 5N max/0.3 min | N/A |
| | Endurance | | 500 | 500 | 500 | 500 |
| | Ct \varnothing | | 1mm | 1 mm | 0.76 mm | 1 mm |
| Wire | Wire gauge | | AWG 20 to 28 | AWG 20 to 24 | AWG 22 to 28 | N/A |
| | Max \varnothing over insulator | | 1.7 mm | 1.7 mm | 1.4 mm | N/A |
| Indents version | | | Available | N/A | Available | N/A |
| Page | | | 10/12 | 14 | 16 | 18 |



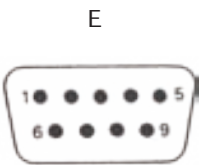
D - subminiature connectors

Standard connectors : 8630 (HE 501/HE508), SMA, Hermetic

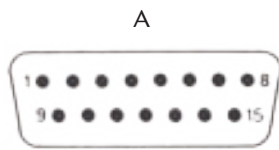
Layouts :

Male insulator front view

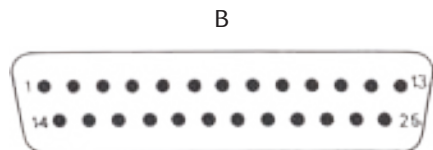
Contacts are individually numbered on both side of insulator.



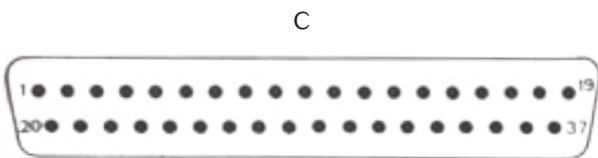
9 contacts



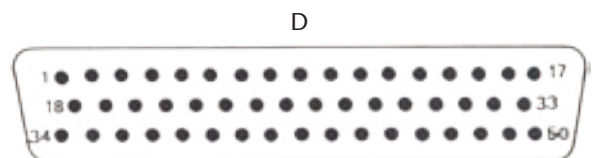
15 contacts



25 contacts

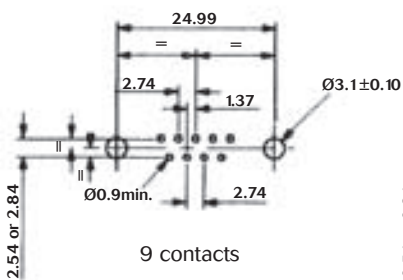


37 contacts

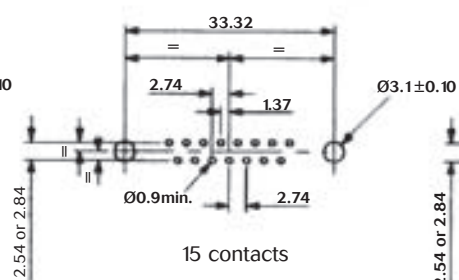


50 contacts

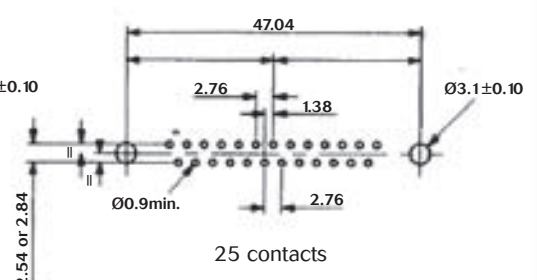
PCB drilling dimensions (mm) (for Hermetic version only) :



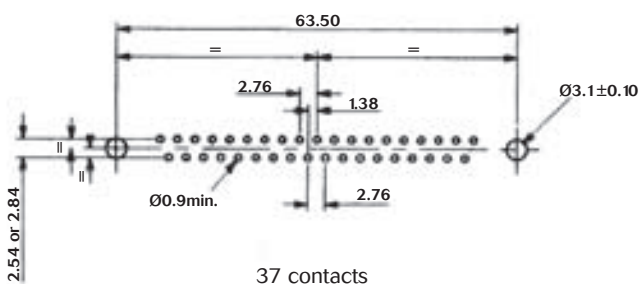
9 contacts



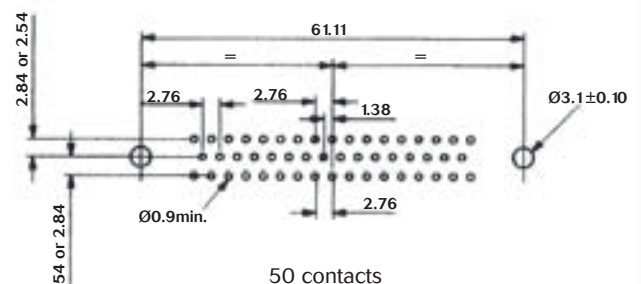
15 contacts



25 contacts



37 contacts



50 contacts

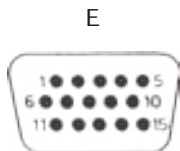
D - subminiature connectors

High density connectors : 8635

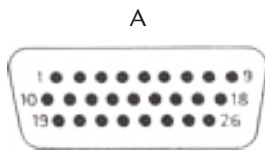
Layouts :

Male insulator front view

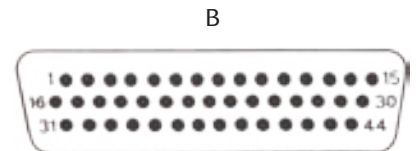
Contacts are individually numbered on both side of insulator.



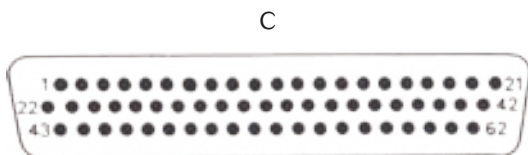
15 contacts



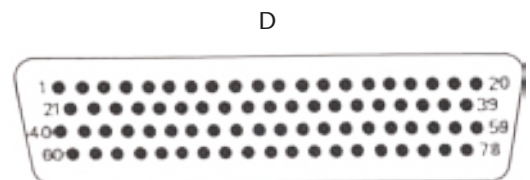
26 contacts



44 contacts

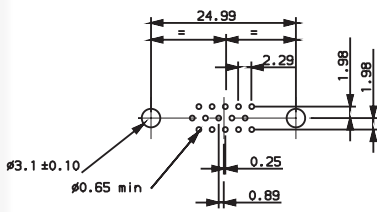


62 contacts

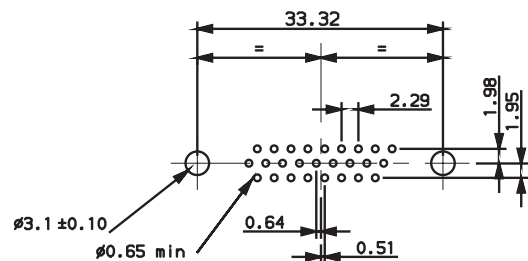


78 contacts

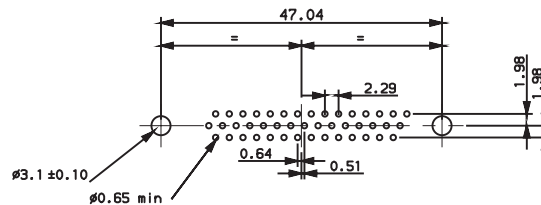
PCB drilling dimensions (mm) :



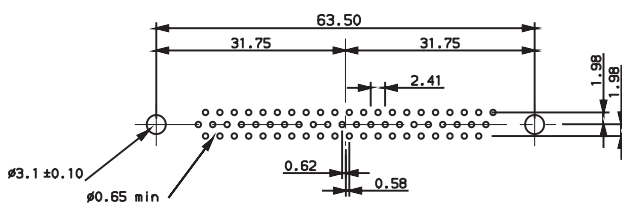
15 contacts



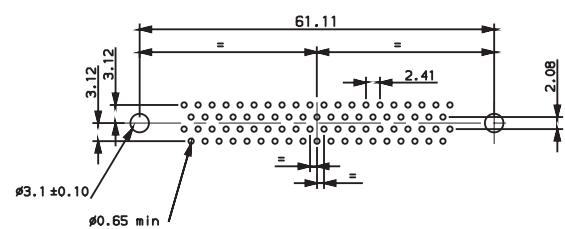
26 contacts



44 contacts



62 contacts



78 contacts



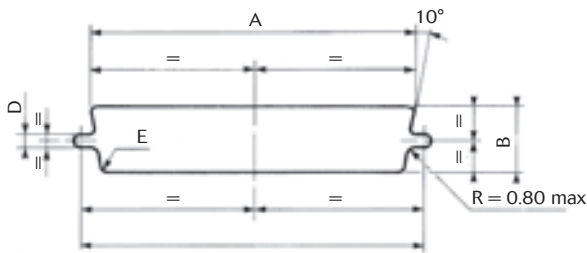
D - subminiature connectors

Panel cut out & Panel mounting

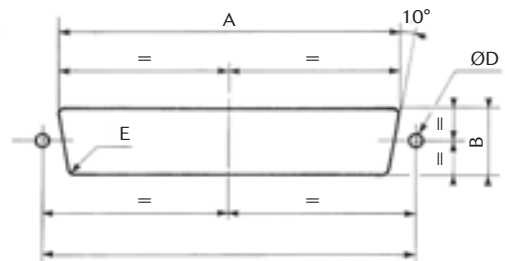
Panel cut-out

| Shell size | Mounting type | A +/-0.2 | B +/-0.2 | C +/-0.2 | D +/-0.05 | E +/-0.1 |
|------------|---------------|-------------|-------------|-------------|--------------|-------------|
| E | Front | 22.20 | 13.00 | 25.00 | 3.00 | 2.10 |
| | Rear | 20.50 | 11.40 | 25.00 | 3.00 | 3.30 |
| A | Front | 30.50 | 13.00 | 33.30 | 3.00 | 2.10 |
| | Rear | 28.80 | 11.40 | 33.30 | 3.00 | 3.30 |
| B | Front | 44.30 | 13.00 | 47.00 | 3.00 | 2.10 |
| | Rear | 42.50 | 11.40 | 47.00 | 3.00 | 3.30 |
| C | Front | 60.70 | 13.00 | 63.50 | 3.00 | 2.10 |
| | Rear | 59.10 | 11.40 | 63.50 | 3.00 | 3.30 |
| D | Front | 58.30 | 15.80 | 61.50 | 3.00 | 2.10 |
| | Rear | 56.30 | 14.10 | 61.50 | 3.00 | 3.30 |

Cut-out front panel mounting
(screw mounting)

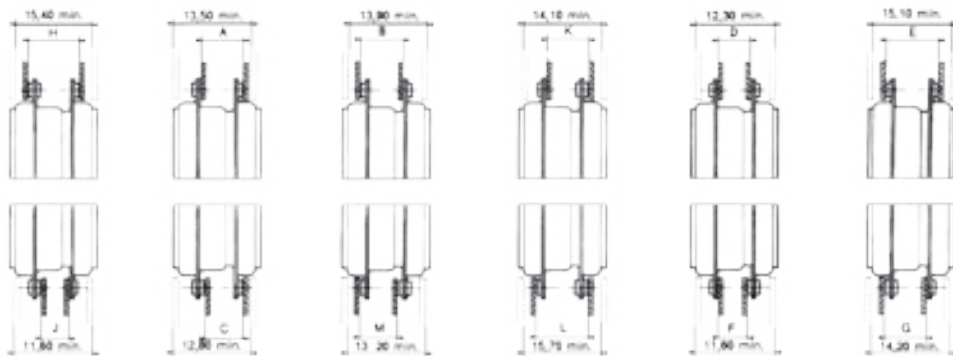


Cut-out rear panel mounting
(screw mounting)



Panel mounting

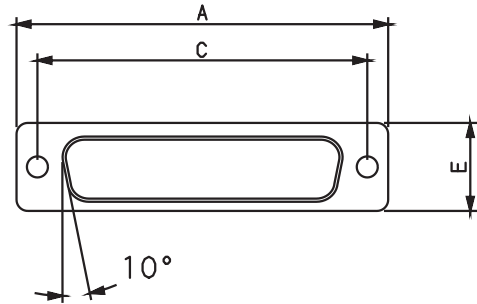
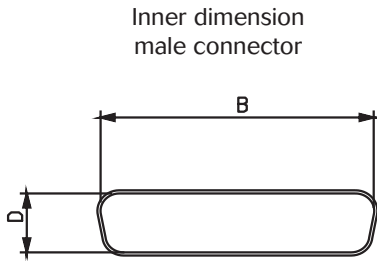
It is recommended that only one pair of connectors should be float mounted.
Rigid mounted connectors require 2 screws $\varnothing 3\text{mm}$
Float mounting connectors require $\varnothing 2\text{mm}$



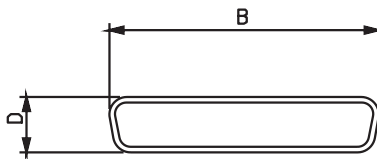
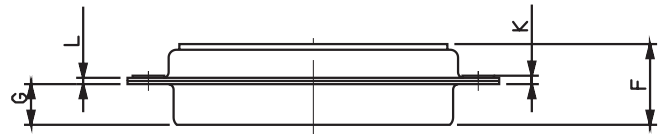
| Shell size | A 0/+0.6 | B 0/+0.6 | C 0/+0.6 | D 0/+0.6 | E 0/+0.6 | F 0/+0.6 | G 0/+0.6 | H 0/+0.6 | J 0/+0.6 | K 0/+0.6 | L 0/+0.6 | M 0/+0.6 |
|------------|-------------|-------------|-------------|-------------|-------------|-------------|-------------|-------------|-------------|-------------|-------------|-------------|
| E | 7.65 | 7.65 | 6.85 | 6.45 | 8.85 | 5.65 | 8.25 | 9.45 | 5.65 | 8.25 | 9.45 | 6.85 |
| A | 7.55 | 7.55 | 6.75 | 6.35 | | 9.15 | 5.55 | 8.15 | 9.35 | 5.55 | 8.15 | 9.35 |
| B | | 7.95 | | | 9.75 | | | 7.15 | | | | |
| C | | 7.95 | 9.75 | 7.15 | | | | | | | | |
| D | | | | | | | | | | | | |

D - subminiature connectors

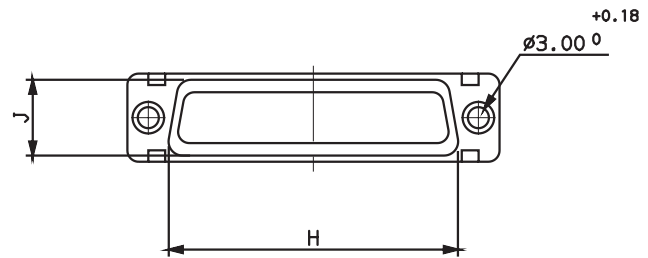
Shell dimensions



View of
mating faces



Outer view
female connector



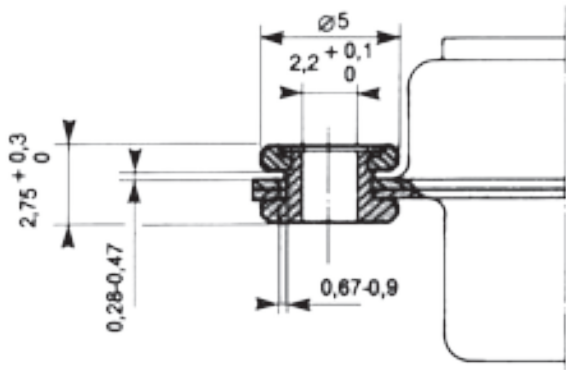
| Shell size | Contact type | A +/-0.38 | B +/-0.13 | C +/-0.13 | D +/-0.13 | E +/-0.38 | F Max | G +/-0.25 | H +/-0.25 | J +/-0.25 | K Max | L +/-0.12 |
|------------|--------------|--------------|--------------|--------------|--------------|--------------|----------|--------------|--------------|--------------|----------|--------------|
| E | Pin | 30.81 | 16.91 | 24.99 | 8.35 | 12.55 | 10.99 | 5.85 | 19.27 | 10.71 | 1.50 | 0.90 |
| | Socket | | 16.33 | | 7.89 | | 11.21 | 6.05 | | | | |
| A | Pin | 39.14 | 25.24 | 33.32 | 8.35 | | 10.99 | 5.85 | 27.50 | | | |
| | Socket | | 24.66 | | 7.89 | | 11.21 | 6.05 | | | | |
| B | Pin | 53.03 | 38.96 | 47.04 | 8.35 | | 11.07 | 5.75 | 41.27 | | | |
| | Socket | | 38.37 | | 7.89 | | 11.21 | 6.05 | | | | |
| C | Pin | 69.32 | 55.42 | 63.50 | 8.35 | 11.09 | 5.75 | 57.70 | | | | |
| | Socket | | 54.83 | | 7.89 | 11.21 | 6.05 | | | | | |
| D | Pin | 66.93 | 52.80 | 61.11 | 11.20 | 15.37 | 11.09 | 5.75 | 55.32 | 13.56 | 1.70 | 1.00 |
| | Socket | | 52.42 | | 10.74 | | 11.21 | 6.05 | | | 1.50 | |



D - subminiature connectors

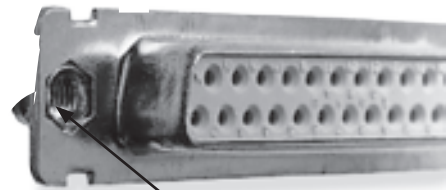
Mounting options

F: Float mounting



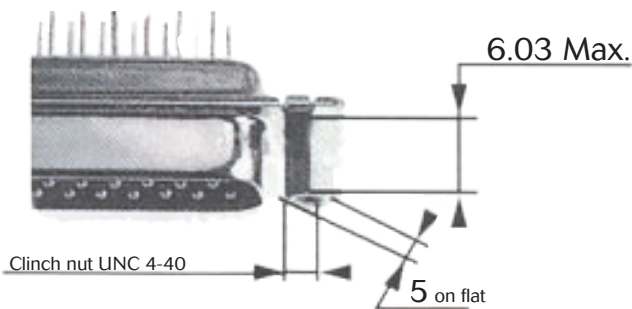
L: Clinch nut M3

O: Clinch nut UNC 4-40



Clinch nut UNC 4-40

V: Female screw lock UNC 4-40



8630 and 8635 series (dimensions in mm).



D - subminiature connectors

8630 Series HE 501

Connector accommodating removable machined crimp contacts for 20/24 or 26/28 AWG wires

In compliance with
 NFC 93425/HE 501
 Class -55°C to +125°C
 Contact #20
 Standard shell plating : Cadmium
 Other platings available : Tin
 Zinc



Ordering information

| | | | | | | | | |
|--|---|---|-----------|----------|----------|---|---|---|
| Series 8630 (8631 : float mounting) | 8630 | - | 25 | P | L | - | - | - |
| Options 1 | None - Standard L - Clinch nut M3 (8630 only) O - Clinch nut UNC 4.40 (8630 only) V - Female screw lock UNC 4.40 (8630 only) | | | | | | | |
| Number of contacts | 09, 15, 25, 37, 50 | | | | | | | |
| Contact type | P - Pin S - Socket | | | | | | | |
| Contacts | None - With standard 20/24 AWG contacts L - Without contacts | | | | | | | |
| Rear type | None - Standard H - Shielding termination fingers (only for T plating) | | | | | | | |
| Shell plating | None - Cadmium T - Tin Z - Zinc | | | | | | | |
| Front type | None - Standard X - With indents (only for front of male connector) | | | | | | | |

Diameter of the insulator cable Max.: 1.6 mm



D - subminiature connectors

8630 Series HE 501

Removable crimp contact ordering information



| Gauge | Pin | Socket | øA |
|-----------|-----------|-----------|------|
| AWG 20/24 | 8630-162 | 8630-165 | 1.17 |
| AWG 26/28 | 8631-4111 | 8631-6121 | 0.6 |

Cross reference list for qualified part number HE501 & SOURIAU

Examples:
 HE501 F 25 BP = 8631 25 P
 HE501 N 37 BS = 8630 37 S

| Connector type | | HE501 | SOURIAU P/N |
|---------------------------------|----------------|--------|---------------|
| Removal crimp contact AWG 20/24 | Standard | Pin | HE501 N ** BP |
| | | Socket | HE501 N ** BS |
| | Float mounting | Pin | HE501 F ** BP |
| | | Socket | HE501 F ** BS |

** : Shell size



D - subminiature connectors

8630 Series HE 508

Connector accommodating removable machined crimp contacts for 20/24 AWG wires

For heavy duty applications
 Class -55°C to +155°C
 Special proof versions available
 Contacts #20
 Standard shell plating: Cadmium
 Other platings available : Tin
 Zinc



Ordering information

| | |
|---------------------------|---|
| Series 8630 | 863 0 25 P 012 L N - - - |
| Options 1 | 0 - Standard mounting holes (Ø=3.10) 1 - Float mounting |
| Number of contacts | 09, 15, 25, 37, 50 |
| Contact type | P - Pin S - Socket |
| Specification | None - Standard 012 - Splash proof (see page 13 for details) 015 - Dust-proof (see page 13 for details) |
| Contacts | None - With standard 20/24 AWG contacts L - Without contact |
| HE 508 coding | N - Mandatory for standard version (not for 012 Splash proof version and for 015 Dust proof version) |
| Rear type | None - Standard H - Shielding termination fingers (only for T plating) |
| Shell plating | None - Cadmium T - Tin Z - Zinc |
| Front type | None - Standard X - With indents (only for front of male connector) |



D - subminiature connectors

8630 Series HE 508

Cross reference list for qualified part number HE508 & SOURIAU

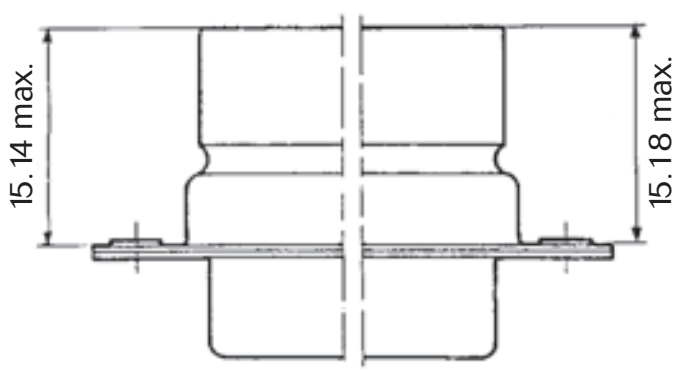
Example:
HE508 N 25 BP = 8630 25 PN

| Connector type | | | HE508 | SOURIAU P/N |
|------------------------------------|----------------|--------|---------------|-------------|
| Removal crimp contact AWG 20/24 | Standard | Pin | HE508 N ** BP | 8630 ** PN |
| | | Socket | HE508 N ** BS | 8630 ** SN |
| | Float mounting | Pin | HE508 F ** BP | 8631 ** PN |
| | | Socket | HE508 F ** BS | 8631 ** SN |

** : Shell size

Special proof versions (available in HE508 series only)

Examples:
 8630 25 P012
 012: Splash proof version, grommet + interfacial seal + potting (conform to IP65)
 8630 25 P015
 015: Dust proof version, rear grommet only



D - subminiature connectors

SMA MIL-C Series

MIL C 24308 C
Connector accomodating
removable machined crimp
contacts for 20/24 AWG
wires

Class -55°C to +125°C
 Shell plating: Cadmium
 Contact #20

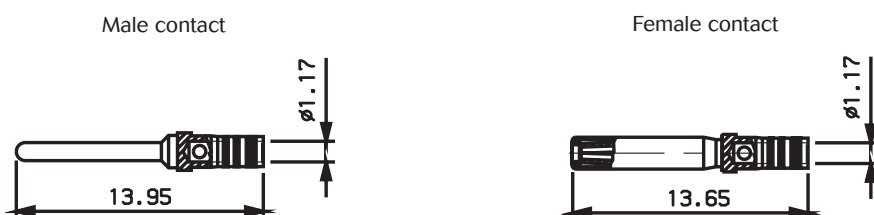


Ordering information

| | | | | | | | | |
|---------------------------|---|----------|-----------|----------|-----------|----------|----------|----------|
| Series S-MA | S | B | MA | - | 25 | P | L | N |
| Shell size | E, A, B, C, D | | | | | | | |
| S-MA series | MA - Mandatory | | | | | | | |
| Options 1 | None - Standard F - Float mounting | | | | | | | |
| Number of contacts | 09, 15, 25, 37, 50 | | | | | | | |
| Type | P - Pin S - Socket | | | | | | | |
| Contact | Blank - With MIL contacts L - Without MIL contacts N - Mandatory for classified QPL version | | | | | | | |

Diameter of insulator cable max: 1.6 mm
 This serie can be ordered directly with MIL part number (See page 15).

Crimp contact for AWG 20/24 wire





D - subminiature connectors

SMA MIL-C Series

MIL C 24308 C contact

| AWG | Contact type | SOURIAU P/N | Reference | Colour code |
|-------|--------------|-------------|---------------|-------------------|
| 20/24 | Pin | 8630 3020 A | M39029/64-369 | Orange/Blue/White |
| | Socket | 8630 3022 A | M39029/63-368 | Orange/Blue/Grey |

Tool part number for SMA Series



M22520/2-01

| Tools | P/N | Standard | SOURIAU |
|-------------------------|-----|-------------|-----------|
| Plier | | M22520/2-01 | 8476-01 |
| Locator | | M22520/2-08 | 8476-08 |
| Extraction plastic tool | | - | 8630-06A |
| MIL extraction tool | | M81969/1-02 | 8630-3330 |

MIL vs SOURIAU cross reference

| Connector type | Male connector | | Female connector | |
|--------------------------------|----------------|---------------|------------------|------------|
| | MIL-C-24308 C | SOURIAU | MIL-C-24308 C | SOURIAU |
| Standard with contact | M24308/4-1F | SEMA09PN | M24308/2-1F | SEMA09SN |
| | M24308/4-2F | SAMA15PN | M24308/2-2F | SAMA15SN |
| | M24308/4-3F | SBMA25PN | M24308/2-3F | SBMA25SN |
| | M24308/4-4F | SCMA37PN | M24308/2-4F | SCMA37SN |
| | M24308/4-5F | SDMA50PN | M24308/2-5F | SDMA50SN |
| Standard without contact | M24308/4-259F | SEMA09PLN | M24308/2-281F | SEMA09SLN |
| | M24308/4-260F | SAMA15PLN | M24308/2-282F | SAMA15SLN |
| | M24308/4-261F | SBMA25PLN | M24308/2-283F | SBMA25SLN |
| | M24308/4-262F | SCMA37PLN | M24308/2-284F | SCMA37SLN |
| | M24308/4-263F | SDMA50PLN | M24308/2-285F | SDMA50SLN |
| Float mounting with contact | M24308/4-302F | SEMAF09PN | M24308/2-342F | SEMAF09SN |
| | M24308/4-303F | SAMAF15PN | M24308/2-343F | SAMAF15SN |
| | M24308/4-304F | SBMAF25PN | M24308/2-344F | SBMAF25SN |
| | M24308/4-305F | SCMAF37PN | M24308/2-345F | SDMAF37SN |
| | M24308/4-306F | SDMAF50PN | M24308/2-346F | SEMAF50SN |
| Float mounting without contact | | | M24308/2-482F | SEMAF09SLN |
| | | | M24308/2-483F | SAMAF15SLN |
| | | | M24308/2-484F | SBMAF25SLN |
| | | | M24308/2-485F | SCMAF37SLN |
| | | M24308/2-486F | SDMAF50SLN | |



D - subminiature connectors

8635 Series

High density Connector

SOURIAU 8635 connectors for aerospace and military applications offer high density crimp and straight spill contacts in standard E, A, B, C, D shells.

The 8635 connectors meet the requirements of MIL-C-24308 dust and splash proof specifications.

Class -55°C to +155°C
 Standard shell plating: Cadmium
 Other platings available : Tin
 Zinc

Contact #22D



Ordering information

| | | | | | | | | | |
|---------------------------|--|---|-----------|----------|------------|----------|---|---|---|
| Series | 8635 | - | 44 | P | 012 | L | - | - | - |
| Options 1 | None - Standard mounting holes (Ø=3.10) F - Float mounting L - Clinch nut M3 O - Clinch nut UMC 4.40 V - Female screw lock UNC 4.40 | | | | | | | | |
| Number of contacts | 15, 26, 44, 62, 78 | | | | | | | | |
| Contact type | P - Pin S - Socket | | | | | | | | |
| Specification | None - Standard 012 - Splash-proof (see page 17 for details) 015 - Dust-proof (see page 17 for details) 017 - Straight spills (see page 17 for details) | | | | | | | | |
| Contacts | None - With standard 20/24 AWG contacts L - Without contacts | | | | | | | | |
| Rear type | None - Standard H - Shielding termination fingers (only for T plating) | | | | | | | | |
| Shell plating | None - Cadmium T - Tin Z - Zinc | | | | | | | | |
| Front type | None - Standard X - With indents (only for front of male connector) | | | | | | | | |

Diameter of insulator cable max: 1.4 mm



D - subminiature connectors

8635 Series

Contacts part numbers

| | Type | Part number |
|----------------------------|--------|-------------|
| Standard | Pin | 8635-4100 |
| | Socket | 8635-9100 |
| Compliant with MIL-C-24308 | Pin | 8635-4110 |
| | Socket | 8635-9110 |

Tooling part numbers

| Contact size | Contact type | Plier | | Locator | |
|--------------|--------------|-------------|--------------|-------------|--------------|
| | | Souriau P/N | Standard P/N | Souriau P/N | Standard P/N |
| #22D | Pin | 8476-01 | M22520/2-01 | 8476-09 | M22520/2-09 |
| | Socket | | | 8476-07 | M22520/2-07 |



M22520/2-01

Insertion and extraction tools

| Contact size | Standard P/N |
|--------------|--------------|
| #22D | M22520/14-01 |



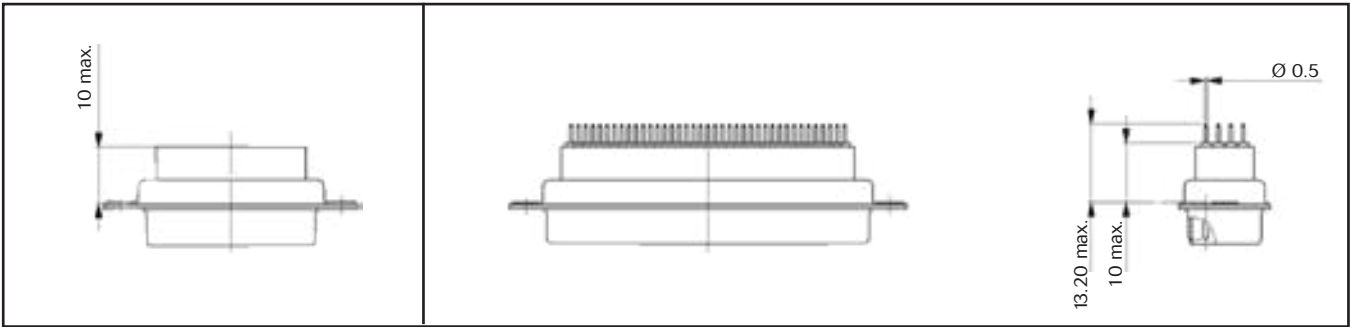
Special proof versions

- 012: Splash proof version, grommet + interfacial seal + potting (conform to IP65)
- 015: Dust proof version, rear grommet only

Dimensions

Standard version (crimp contacts)

Straight spill version (spec 017)





D - subminiature connectors

D-Sub hermetic connectors

D-Sub hermetic connector

Hermetic rectangular connectors are manufactured with glass bead insulator. They are used in all applications requiring perfect hermeticity.

Shell housing may be solder or screw mounted.

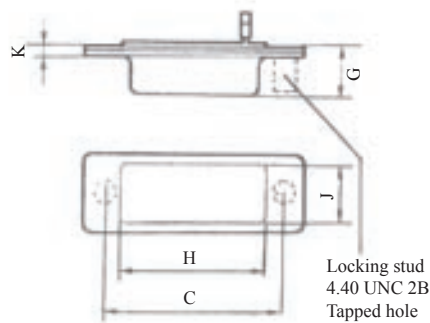
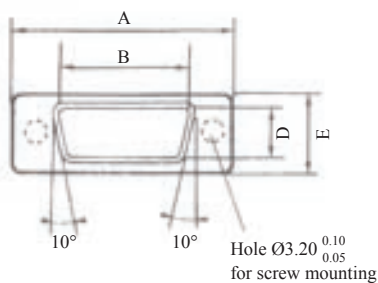
3 types of contacts terminations are available: Solder bucket, Solder eyelet or Straight spill.

They are compliant to MIL-C-24308 C.



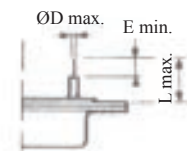
Dimensions (mm)

| Shell size | A _{0/+0.30} | B | C Screw mounting | D | E _{0/+0.30} | G max | H _{+/-0.20} | J _{+/-0.20} | K _{+0.10 -0.20} |
|------------|----------------------|-------|------------------------|-------|----------------------|-------|----------------------|----------------------|------------------------------|
| E | 30.80 | 16.94 | 24.99 | 8.41 | 12.54 | 8.45 | 18.40 | 9.40 | 2.50 |
| A | 39.14 | 25.27 | 33.32 | | | | 23.70 | | |
| B | 53.03 | 39.00 | 47.04 | | | | 37.56 | | |
| C | 69.29 | 55.45 | 63.50 | 11.10 | 15.36 | 8.75 | 53.97 | 12.70 | 2.70 |
| D | 66.92 | 52.86 | 61.11 | | | | 50.80 | | |

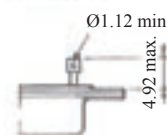


Solder bucket

Straight spills



Solder eyelet





D - subminiature connectors

D-sub hermetic connectors

Part numbers & specifications

| Shell size | Plating | | Solder mounting | | | | Screw mounting | | |
|-------------|------------|----------|-------------------|----------------|----------------------|----------------|----------------|----------------|-----------|
| | Shell | Cts | With locking stub | | Without locking stub | | Solder bucket | Straight spill | Eyelet |
| | | | Solder bucket | Straight spill | Solder bucket | Straight spill | | | |
| E 9 Cts | Cadmium | Gold | DEH09P002 | DEH09P004 | DEH09P006 | DEH09P008 | DEH09P102 | DEH09P104 | - |
| | Cadmium | Gold | - | DEH09P014 | - | - | - | - | - |
| | Gold | Gold | - | - | - | - | DEH09P122 | DEH09P124 | - |
| | Tin bright | Gold | DEH09P007 | DEH09P012 | DEH09P023 | DEH09P010 | DEH09P107 | DEH09P113 | - |
| | Tin bright | Gold | - | DEH09P015 | DEH09P025 | - | - | DEH09P116 | - |
| | Tin bright | Gold | - | DEH09P016 | DEH09P005 | - | - | - | - |
| | Tin bright | Gold | - | DEH09P017 | - | - | - | - | - |
| | Tin mat | Tin mat | - | - | - | DEH09P009 | - | - | - |
| | Nickel | Nickel | - | - | - | - | - | - | DEH09P121 |
| A 15 Cts | Cadmium | Gold | DAH15P002 | DAH15P004 | DAH15P006 | DAH15P008 | DAH15P102 | DAH15P104 | - |
| | Cadmium | Gold | - | DAH15P014 | - | - | - | - | - |
| | Gold | Gold | - | - | - | - | DAH15P122 | DAH15P124 | - |
| | Tin bright | Gold | DAH15P007 | DAH15P012 | DAH15P023 | DAH15P010 | DAH15P107 | DAH15P113 | - |
| | Tin bright | Gold | - | DAH15P015 | DAH15P005 | - | DAH15P119 | DAH15P116 | - |
| | Tin bright | Gold | - | DAH15P016 | - | - | DAH15P120 | - | - |
| | Tin mat | Tin mat | - | - | - | DAH15P009 | - | - | - |
| B 25 Cts | Cadmium | Gold | DBH25P002 | DBH25P004 | DBH25P006 | DBH25P008 | DBH25P102 | DBH25P104 | - |
| | Cadmium | Gold | - | DBH25P014 | DBH25P020 | - | - | - | - |
| | Gold | Gold | - | - | - | - | DBH25P122 | DBH25P124 | - |
| | Tin bright | Gold | DBH25P007 | DBH25P011A | DBH25P023 | DBH25P010 | DBH25P107 | DBH25P113 | - |
| | Tin bright | Gold | - | DBH25P012 | DBH25P005 | - | - | DBH25P115 | - |
| | Tin bright | Gold | - | DBH25P015 | - | - | - | DBH25P116 | - |
| | Tin bright | Gold | - | DBH25P016 | - | - | - | - | - |
| | Tin bright | Gold/Tin | - | - | - | - | - | DBH25P125 | - |
| | Tin mat | Tin mat | - | - | - | DBH25P009 | - | - | - |
| C 37 Cts | Cadmium | Gold | DCH37P002 | DCH37P004 | DCH37P006 | DCH37P008 | DCH37P102 | DCH37P104 | - |
| | Cadmium | Gold | - | DCH37P014 | - | - | - | - | - |
| | Gold | Gold | - | - | - | - | DCH37P122 | DCH37P124 | - |
| | Tin bright | Gold | DCH37P007 | DCH37P012 | DCH37P023 | DCH37P010 | DCH37P107 | DCH37P113 | - |
| | Tin bright | Gold | - | DCH37P015 | DCH37P005 | DCH37P021 | - | DCH37P114 | - |
| | Tin bright | Gold | - | DCH37P016 | - | - | - | DCH37P116 | - |
| | Tin mat | Tin mat | - | - | - | DCH37P009 | - | - | - |
| D 50 Cts | Cadmium | Gold | DDH50P002 | DDH50P004 | DDH50P006 | DDH50P008 | DDH50P102 | DDH50P104 | - |
| | Cadmium | Gold | - | DDH50P014 | - | - | - | - | - |
| | Gold | Gold | - | - | - | - | DDH50P122 | DDH50P124 | - |
| | Tin bright | Gold | DDH50P007 | DDH50P012 | DDH50P023 | DDH50P010 | DDH50P107 | DDH50P113 | - |
| | Tin bright | Gold | - | DDH50P015 | DDH50P005 | - | - | DDH50P114 | - |
| | Tin bright | Gold | - | DDH50P016 | DDH50P019 | - | - | DDH50P116 | - |
| | Tin mat | Tin mat | - | - | - | DDH50P009 | - | - | - |



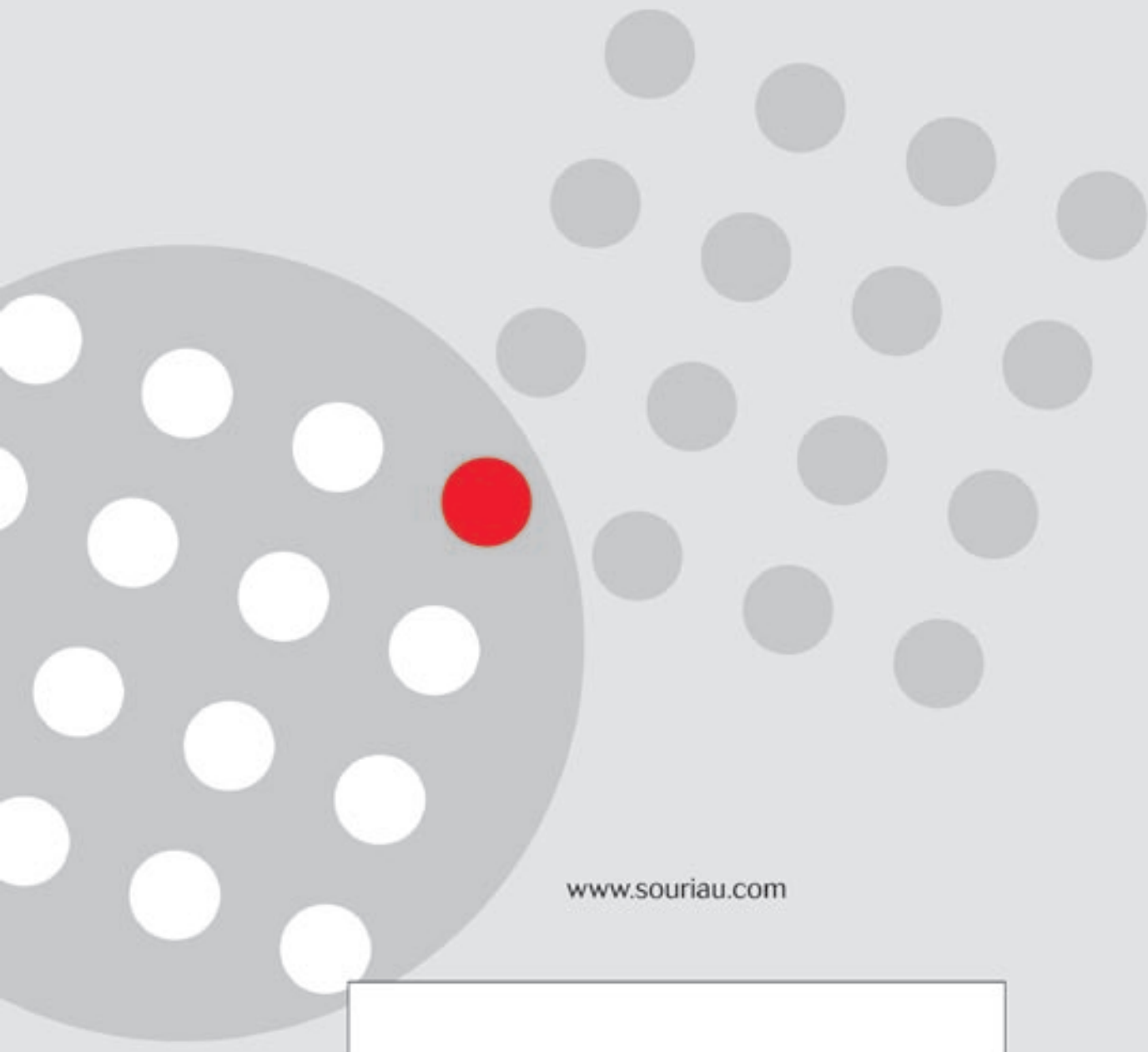
D - subminiature connectors

D-sub hermetic connectors

Straight spill version dimensions

| N° specification | 004 | 008 | 009 | 010 | 011A | 012 | 014 | 015 | 016 |
|------------------|------|-----|-----|-----|------|------|------|------|------|
| L max | 7.62 | | | | 3.40 | 5.25 | 3.83 | 9.60 | 7.62 |
| E min | 6.40 | | | | 2.00 | 4.02 | 2.13 | 8.43 | 6.40 |
| ø D max | 0.83 | | | | 0.60 | 0.68 | 0.63 | 0.83 | 0.83 |

| N° specification | 017 | 021 | 104 | 113 | 114 | 115 | 116 | 124 | 125 |
|------------------|------|------|-----|------|-----|-------|------|-----|-----|
| L max | 3.83 | 7.62 | | 6.82 | | 16.35 | 7.62 | | |
| E min | 2.13 | 6.40 | | 5.60 | | 15.18 | 6.40 | | |
| ø D max | 0.60 | 0.83 | | 0.65 | | 0.85 | 0.83 | | |



www.souriau.com

