

TEK SERIES TEK100

- Low Profile (1.5")
- Single, Dual, Triple and Quad Outputs
- Universal Input
- Worldwide Agency Approvals
- Smaller than Comparable Models
- Stock to 6 Weeks Delivery
- 100% Burn-in/HiPot Tested



Model TEK 100 100 Watt Switch Mode Power Supply

The compact TEK100 is offered in single, dual, triple and quad outputs, complete with short-circuit and overvoltage protection.

The universal input TEK 100 series is designed for compliance with international safety and EMI standards.

Specifications

● Input Specifications

Input Voltage: 90-264VAC
Input Frequency: 47-63 Hz
Input Surge (cold start):
40A max @ 115 VAC,
80A max @ 230 VAC

● Key Features

Reliability (MTBF): 100,000 hrs.
Short-Circuit Protection: Hiccup Type
Overvoltage Protection: 125% typical
Overtemperature Protection

● Environmental

- **Operating**
Temperature: 0 to 50°C
Relative Humidity: 0 to 90%, non-condensing
- **Storage**
Temperature: -20 to 85°C
Relative Humidity: 5 to 95%, non-condensing

● Output Specifications

Output Voltages: 3.3, 5, 12, 15, 24, 48 VDC
Adjustability: V1:±5%

Output Current: see model table
Power Output: 100W, convection cooling
Efficiency (@ max load): 70% min.

- Total Regulation

Single Output: ±1% (0-100% load)
Multiple Output:
Main Output: ±3% (20-100% load)
Auxiliary Outputs: ±5%
Temperature Coefficient:
0.1%/°C, max.
Ripple and Noise: 1% p-p
Overshoot (turn on/off): No overshoot
Step Load Response:
<5% for 20-100% change
Turn-on Delay (120VAC): 1 sec, max.
Hold-up Time (120VAC): 20 ms

● Design Standards

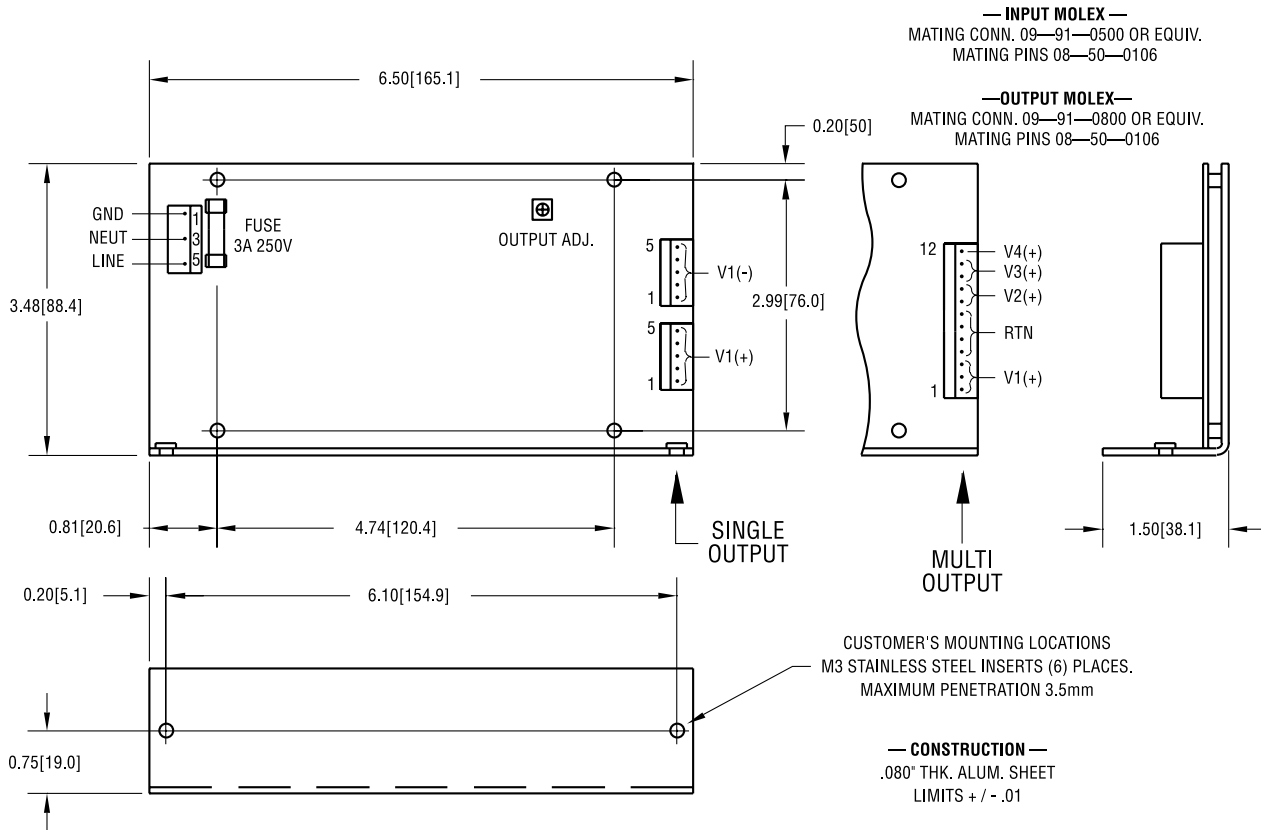
Safety: UL, cUL, TUV, VDE, CE (Pending)
EMI: FCC Part 15 Class B
VDE 0871 Class A

● Package Size

1.5 (H) x 3.5 (W) x 6.5 (L) inches



TEK SERIES TEK100



Model	Output V1		Output V2		Output V3*		Output V4*	
	Voltage	Current	Voltage	Current	Voltage	Current	Voltage	Current
TEK100S01	5V	20A (30A PK)						
TEK100S02	12V	8.5A (12A PK)						
TEK100S03	15V	7.0A (10A PK)						
TEK100S04	24V	4.5A (6A PK)						
TEK100S09	48V	2.2A (3A PK)						
TEK100D12	5V	10A (15A PK)	12V	5A (9A PK)				
TEK100D13	5V	10A (15A PK)	15V	4A (6A PK)				
TEK100D14	5V	10A (15A PK)	24V	2.5A (6A PK)				
TEK100T16	5V	10A (15A PK)	12V	5A (9A PK)	12V	0.5A (1A PK)		
TEK100T17	5V	10A (15A PK)	15V	4A (6A PK)	15V	0.5A (1A PK)		
TEK100Q56	5V	10A (15A PK)	12V	5A (9A PK)	12V	0.5A (1A PK)	5V	0.5A (1A PK)
TEK100Q57	5V	10A (15A PK)	15V	4A (6A PK)	15V	0.5A (1A PK)	5V	0.5A (1A PK)
TEK100Q86	5V	10A (15A PK)	24V	2A (3A PK)	12V	0.5A (1A PK)	12V	0.5A (1A PK)

Note: All peak surge currents are less than 30ms Ton and less than 50% duty cycle. * Factory configurable for (+) or (-) output

Advance Tektris, Inc.

8130 La Mesa Blvd.
La Mesa, CA 91941
TEL: 619-593-5000
FAX: 619-593-5014

Web: <http://www.advance-tektris.com>
E-mail: sales@advance-tektris.com