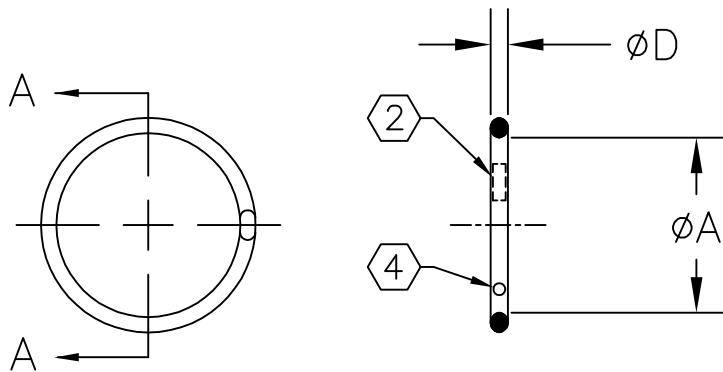


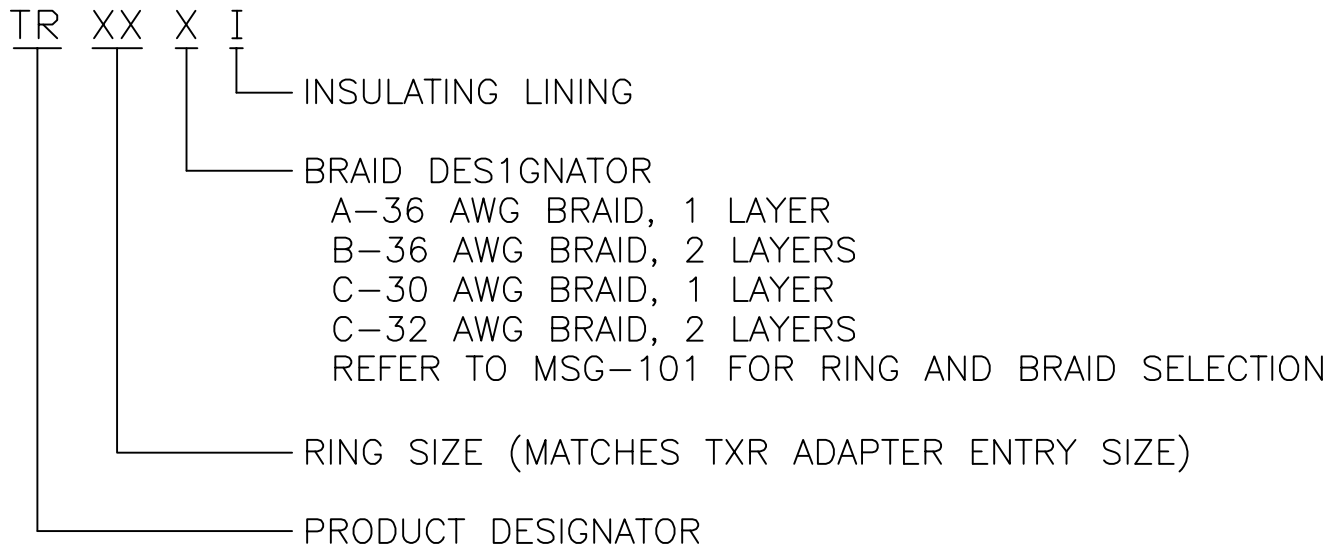
REVISIONS			
LTR	DESCRIPTION	DATE	APPROVED
C	REVISED DWG PER ECO-08-022964	9/16/08	GMR

SCOPE:

THIS SPECIFICATION PROVIDES A DESCRIPTION OF HEAT SHRINKABLE METAL RINGS FOR TERMINATING BRAIDED SHIELD ONTO ADAPTORS DESIGNED FOR THAT PURPOSE.



PART DESCRIPTION:



NOTES:

- MATERIAL: TINEL ALLOY X.
- THE OUTSIDE SURFACE OF THE RING IS MARKED WITH TWO STRIPES OF THERMOCHROMIC PAINT WHICH CHANGE COLOR WHEN THE APPROPRIATE INSTALLATION TEMPERATURE IS REACHED.
- "AI" RINGS ARE IDENTIFIED BY THE ABSENCE OF A RED OR BLUE DOT. REFER TO NOTE 4.
- "BI" RINGS ARE MARKED WITH A RED DOT.
"CI" RINGS ARE MARKED WITH A BLUE DOT.
- REFER TO MIP-101 FOR INSTALLATION PROCEDURE.

If this document is printed it becomes uncontrolled. Check for the latest revision

© 2008 Tyco Electronics Corporation. All Rights Reserved.

CUSTOMER DRAWING	
Raychem Adapters	
300 Constitution Drive Menlo Park, CA 94025 U.S.A.	

UNLESS OTHERWISE SPECIFIED DIMENSIONS ARE INCHES. METRIC DIMENSIONS ARE IN BRACKETS.	
DECIMAL TOLERANCES	
.XXX ± --	[mm]
.XX ± --	[mm]
.X ± --	[mm]
ANGLE TOLERANCE	
.X ± --	

DRAWN E. Goldy	DATE 05-17-93
CHECKED	DATE
APPROVED W.C. Gay	DATE 5-26-93
CAD FILE: TR-CD1_C	
THIRD ANGLE PROJECTION	

TITLE TINEL-LOCK RING		
SIZE A	CODE IDENT. NO. 06090	DWG. NO. TR
DO NOT SCALE THIS DRAWING		SHEET 1 OF 2

PART DESCRIPTION	ϕA		ϕD
	MIN AS SUPPLIED	MAX FREE RECOVERED	
TR04AI	.397 [10.08]	.379 [9.63]	.073±.005 [1.85±.13]
TR04BI	.416 [10.57]	.398 [10.11]	.073±.005 [1.85±.13]
TR05AI	.460 [11.68]	.440 [11.18]	.073±.005 [1.85±.13]
TR05BI	.479 [12.17]	.458 [11.63]	.073±.005 [1.85±.13]
TR06AI	.523 [13.28]	.499 [12.68]	.073±.005 [1.85±.13]
TR06BI	.548 [13.92]	.523 [13.28]	.073±.005 [1.85±.13]
TR07AI	.586 [14.88]	.559 [14.20]	.073±.005 [1.85±.13]
TR07BI	.606 [15.39]	.578 [14.68]	.073±.005 [1.85±.13]
TR08AI	.650 [16.51]	.620 [15.75]	.073±.005 [1.85±.13]
TR08BI	.670 [17.02]	.639 [16.23]	.073±.005 [1.85±.13]
TR10AI	.782 [19.86]	.744 [18.90]	.073±.005 [1.85±.13]
TR10BI	.802 [20.37]	.763 [19.38]	.073±.005 [1.85±.13]
TR10CI	.830 [21.08]	.791 [20.09]	.073±.005 [1.85±.13]
TR12AI	.912 [23.17]	.867 [22.02]	.073±.005 [1.85±.13]
TR12BI	.931 [23.65]	.886 [22.50]	.073±.005 [1.85±.13]
TR12CI	.960 [24.38]	.912 [23.17]	.073±.005 [1.85±.13]
TR14AI	1.040 [26.42]	.988 [25.10]	.073±.005 [1.85±.13]
TR14BI	1.060 [26.92]	1.007 [25.58]	.073±.005 [1.85±.13]
TR14CI	1.089 [27.66]	1.033 [26.24]	.073±.005 [1.85±.13]
TR16AI	1.171 [29.74]	1.111 [28.22]	.073±.005 [1.85±.13]
TR16BI	1.191 [30.25]	1.129 [28.68]	.073±.005 [1.85±.13]
TR16CI	1.216 [30.89]	1.154 [29.31]	.073±.005 [1.85±.13]
TR18AI	1.301 [33.05]	1.234 [31.34]	.073±.005 [1.85±.13]
TR18BI	1.320 [33.53]	1.252 [31.80]	.073±.005 [1.85±.13]
TR20AI	1.430 [36.32]	1.357 [34.47]	.073±.005 [1.85±.13]
TR20BI	1.450 [36.83]	1.376 [34.95]	.073±.005 [1.85±.13]
TR22AI	1.543 [39.19]	1.463 [37.16]	.088±.007 [2.24±.18]
TR22BI	1.561 [39.65]	1.481 [37.62]	.088±.007 [2.24±.18]
TR24AI	1.673 [42.49]	1.587 [40.31]	.088±.007 [2.24±.18]
TR24BI	1.691 [42.95]	1.605 [40.77]	.088±.007 [2.24±.18]
TR28AI	1.932 [49.07]	1.838 [46.68]	.088±.007 [2.24±.18]
TR28BI	1.950 [49.53]	1.858 [47.19]	.088±.007 [2.24±.18]

If this document is printed it becomes uncontrolled. Check for the latest revision

CUSTOMER DRAWING



Tyco Electronics

Raychem Adapters

300 Constitution Drive
Menlo Park, CA 94025 U.S.A.

DRAWN E. Goldy	DATE 05-17-1993	SIZE A	CAGE CODE 06090	DWG. NO. TR	REV C
CAD FILE: TR-CD2_C		DO NOT SCALE THIS DRAWING			SHEET 2 OF 2